

# TDM800 PCI Express Analog Interface Card

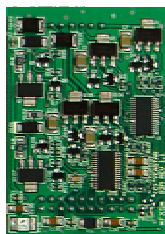
## Fully-supported Zaptel Compatible Hardware

The Yeastar TDM800 PCI EXPRESS is a **PCI Express 1.0** card that supports FXS and FXO station interfaces for connecting analog telephones and analog POTS lines through a PC. It supports a combination of **S2** , **O2** or **SO** modules for a total of 8 lines. Using Yeastar's TDM800 PCI EXPRESS hardware, Open Source **Asterisk** PBX software, and a standard PC, users can create a Small Office Home Office (SOHO) telephony environment that includes all the sophisticated features of a high-end PBX/Voicemail platform. TDM800 PCI EXPRESS is more specially designed to support Windows.

The modules are interchangeable to create various combinations of interfaces.

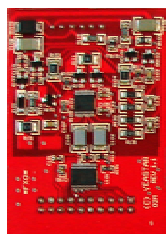


TDM800 PCI Express Analog Card



### S2 Module

The S2 is a module with 2 FXS ports to terminate two analog telephones



### O2 Module

The O2 is a module with 2 FXO ports to terminate two analog POTS lines



### SO Module

1 FXS and 1 FXO Unique PSTN Fallback Function

### Target Applications

Gateway Termination to Analog Telephones and analog POTS lines

### Standard Package

TDM800 PCI Express mother card (Length: 199mm)

Up to 4 daughter modules;

4 line cables and 1 power cable

TDM800 PCI Express Instruction

Size: 255mm\*160mm\*60mm

Weight: 0.45kg

### Interface Standard

PCI Express 1.0 with 3.3- or 5-volt power 4P hard disk power supply with 12-volt

FXS relevant RJ11 port supply DC Feed -48V and loop current 20mA

Two color LED: Red light for FXO port and Green light for FXS port

### Environment Conditions

Operation Range: 0° to 50°C, 32° to 122° F

Storage Range: -20° to 65°C, 4° to 149° F

Humidity: 10-90% non-condensing

### Hardware Requirements

500-Mhz Pentium III or better with 64MB RAM

Available PCI Express Slot

### Certification

CE, FCC, MIC(Korea)