

Skype work as Remote Extension

This solution use Skype as a remote extension. Remote extensions keep telecommuters and road warriors connected to their business no matter where they are. Remote Extension services can significantly reduce users' monthly charges. When users are out of office, traveling or working at remote locations, open their Skype ID then they can always be reached at their office extension as if they were at office, which is completely transparent to their customers and co-workers. Calls between remote locations and their central offices are FREE.

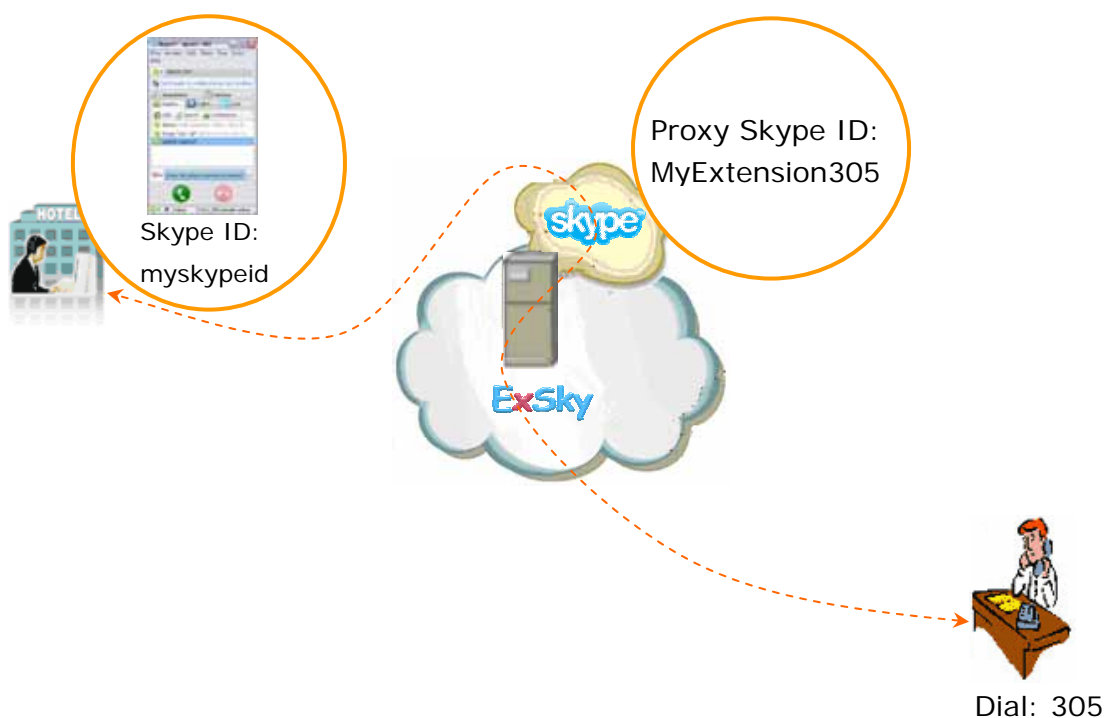
Features:

1. Calls are free between head office and remote locations.
2. Same dialing experience from any location with a broadband internet connection as if you were in the office.
3. Neither to download soft phone nor to build up network, Skype will works as extension and brings free, secure and crystal voice quality VoIP based communication.
4. No attack and high safety by placing server behinds NAT.

Application Sample 1: (ExSky)

If your company is using traditional PBX (PABX), ExSky is a suitable solution for you.

For example, the Remote User's Extension is 305, his proxy Skype ID on ExSky Server is 'myextension305', his actual Skype ID is 'myskypeid'



Setting Steps of Remote Office Function:

1. On ExSky main interface, click 'Options'→ 'Ports', choose the correspond port of 305 and set the Direct-Line. Input the actual Skype ID that will using on the remote office: myskypeid, see Figure 1:

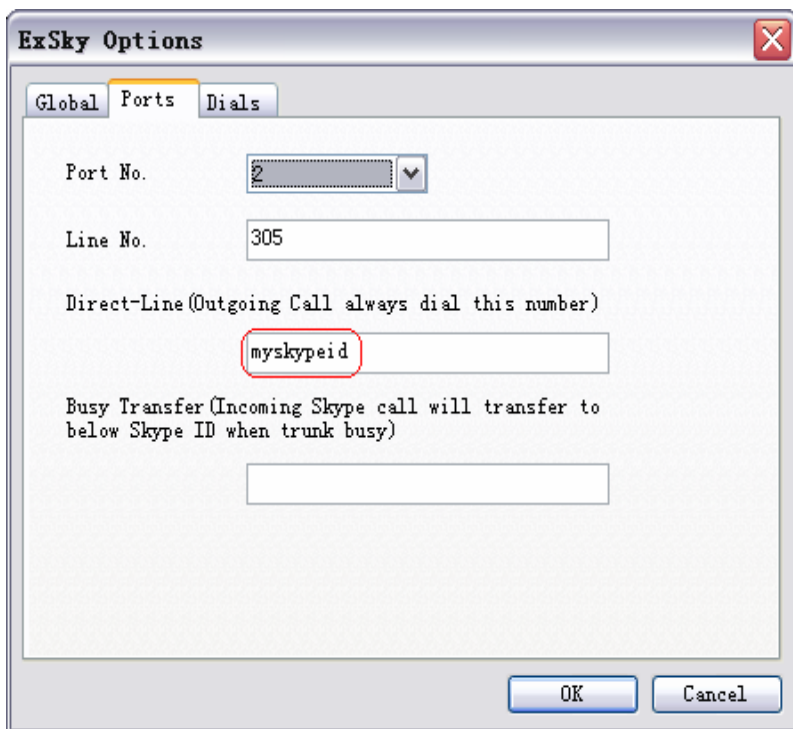


Figure 1

2. Sign in the actual Skype ID on remote office (myskypeid), see Figure 2

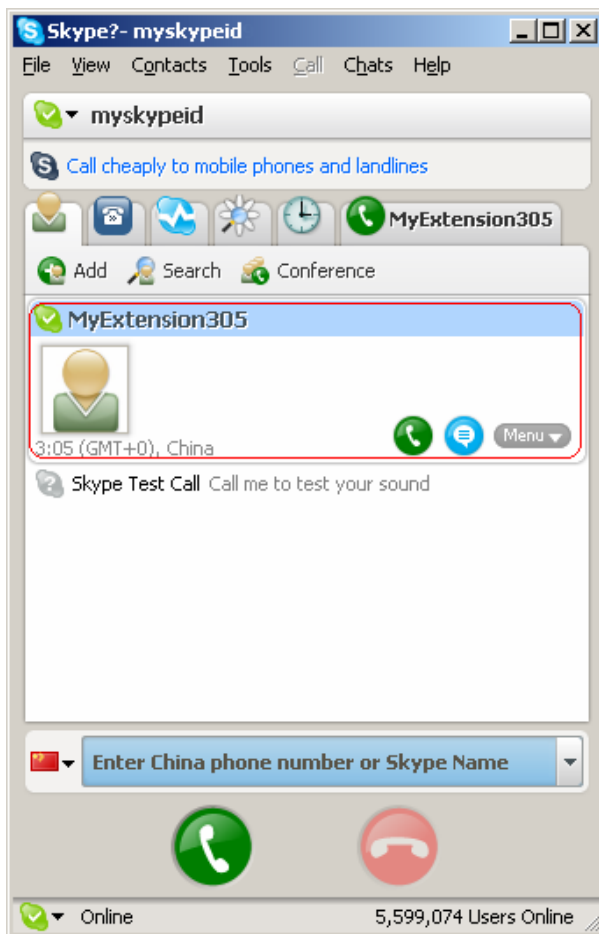


Figure 2

How to use remote office function?

1 Receive incoming calls from extension phone 305.

When someone calls your office extension 305, your actual Skype rings and shows an incoming call, off-hook to answer it. See Figure 3

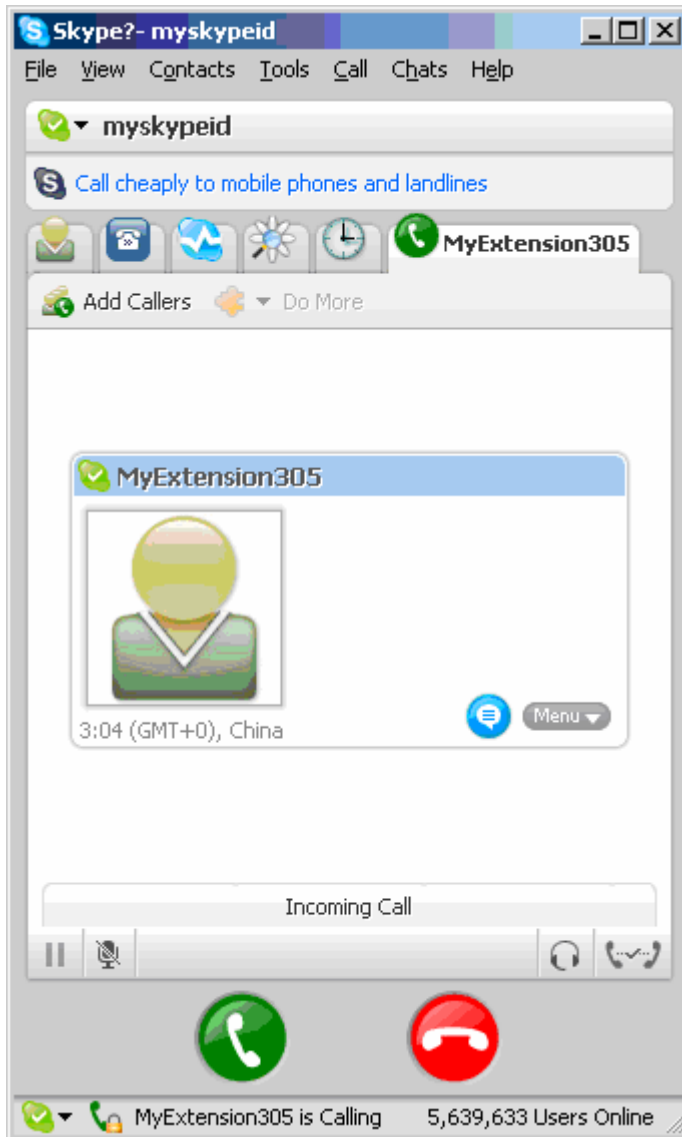


Figure 3

2 Make calls through extension phone 305.

2.1 Click on the proxy Skype ID 'myextension305' to start a call. See Figure 4

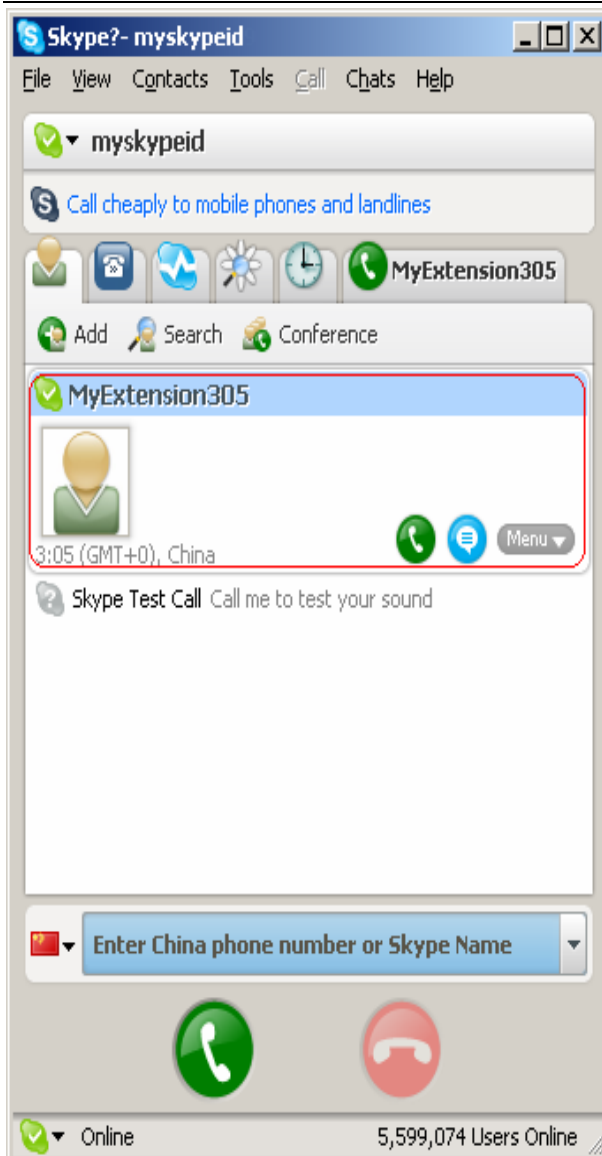


Figure 4-A

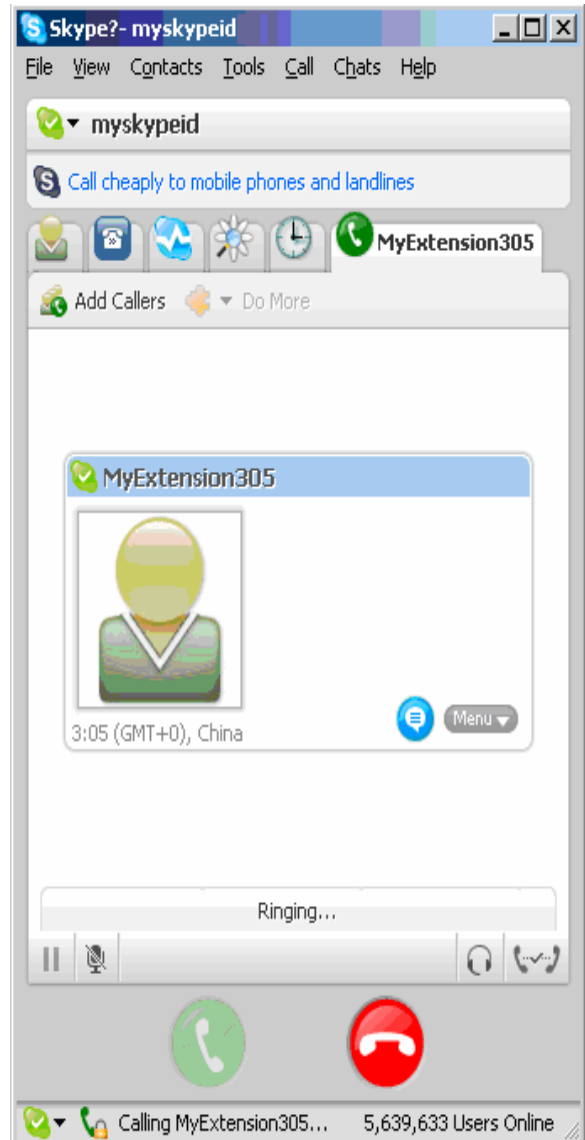


Figure 4-B

2.2 Input the telephone number you want to dial out on the appeared panel. See Figure 5

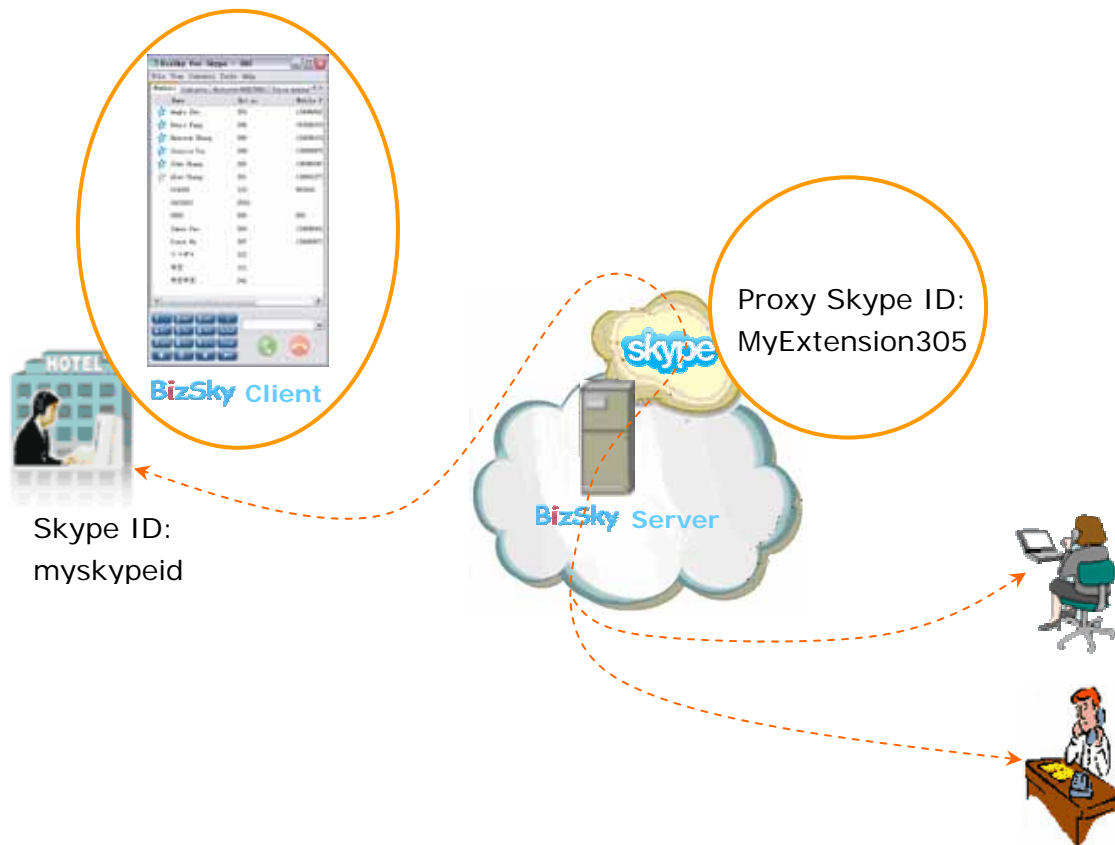


Figure 5

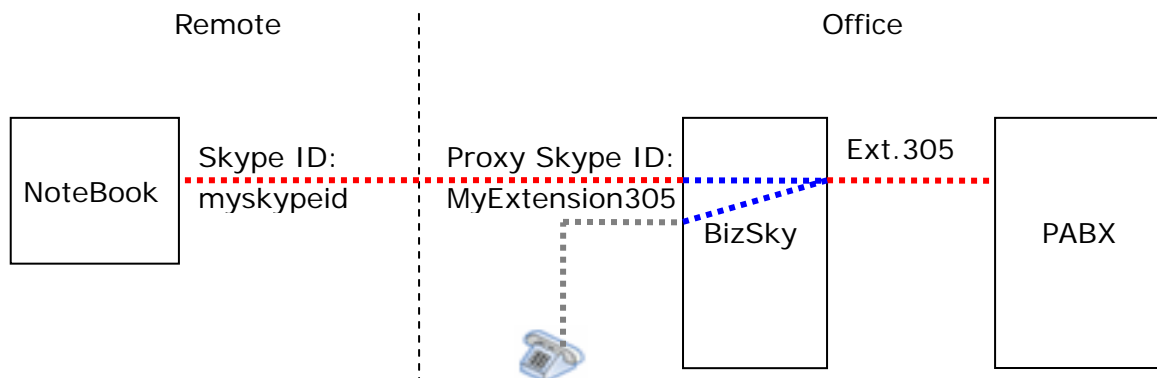
It is same as to dial from office telephone.

Application Sample 2: (BizSky)

If your company is using traditional PBX (PABX), moreover, call manage function is required, please use BizSky solution.



For example, the Advanced Telephone User's Extension is 305, his proxy Skype ID on BizSky Server is 'myextension305', his actual Skype ID is 'myskypeid'



Setting Steps of Remote Office Function:

1. When configure SO module in "BizSky Config Wizard". Please check "Install Skype to provide remote office function". When Skype start, sign in Skype with a new ID ("myextension305"), and input the user's actual Skype ID in the Wizard (myskypeid). Figure 6

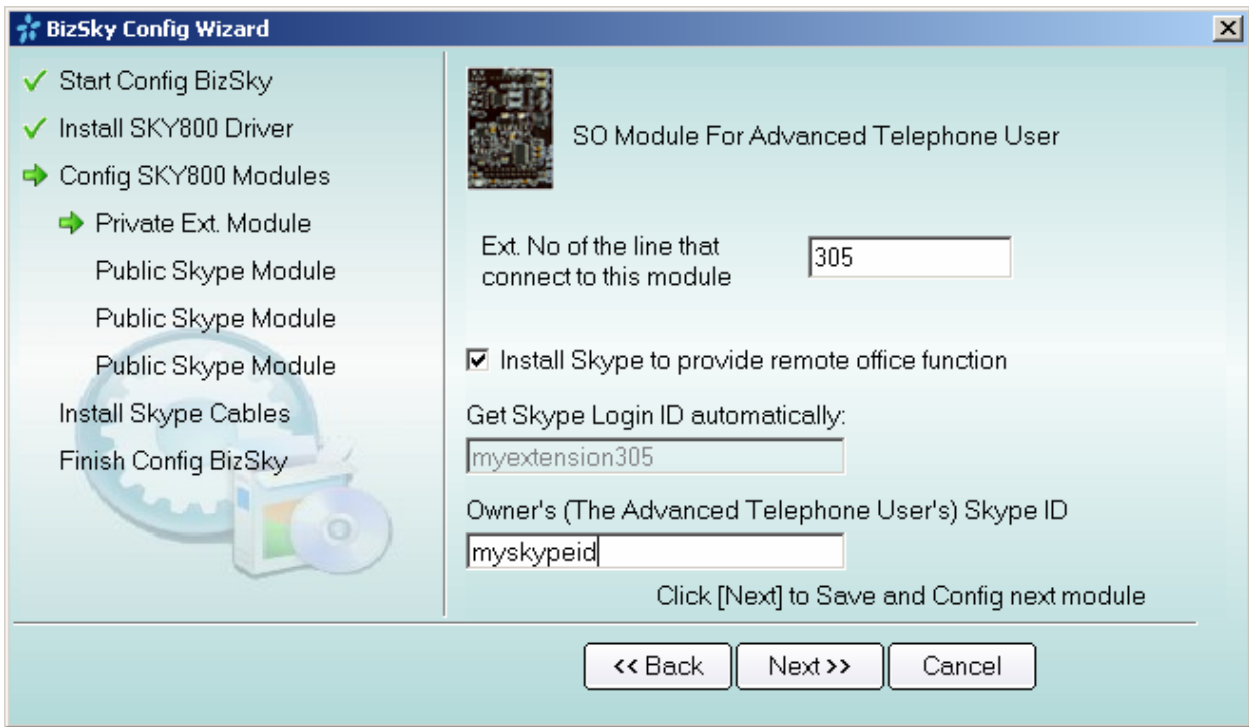


Figure 6

Note: Only Admin can do this operation.

2. Add the actual Skype ID 'myskypeid' into proxy Skype's contacts. See Figure7

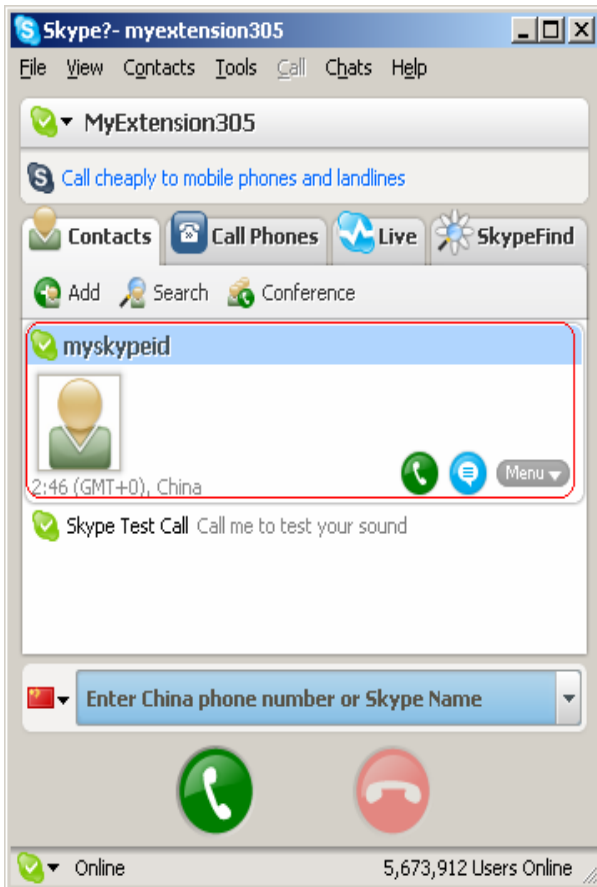


Figure 7

Note: This operation limit to Admin.

3. Add the proxy Skype ID 'myextension305' into the actual Skype's contacts. See Figure 8

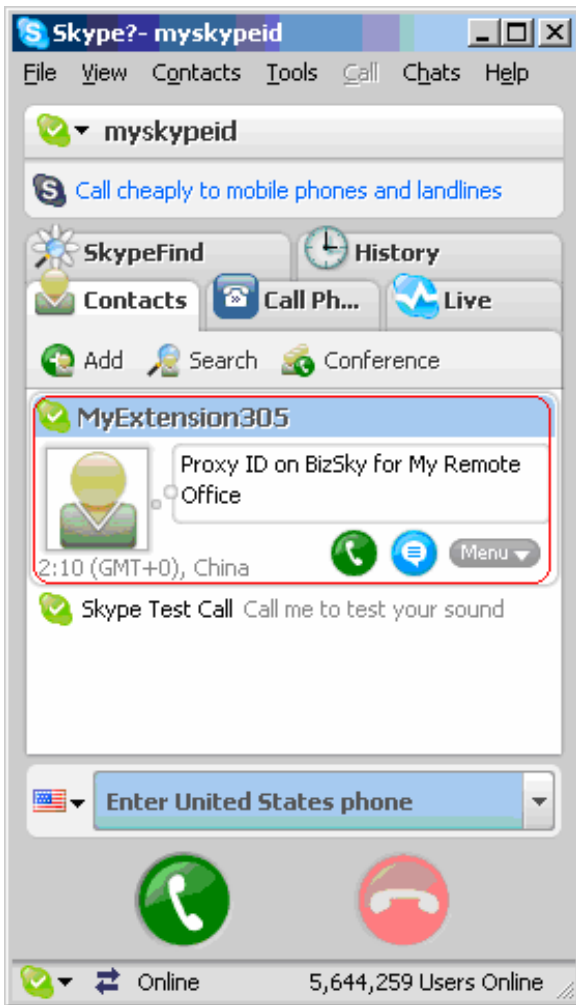


Figure 8

4. Add the proxy Skype ID 'myextension305' into BizSky 'System' Options. See Figure 9

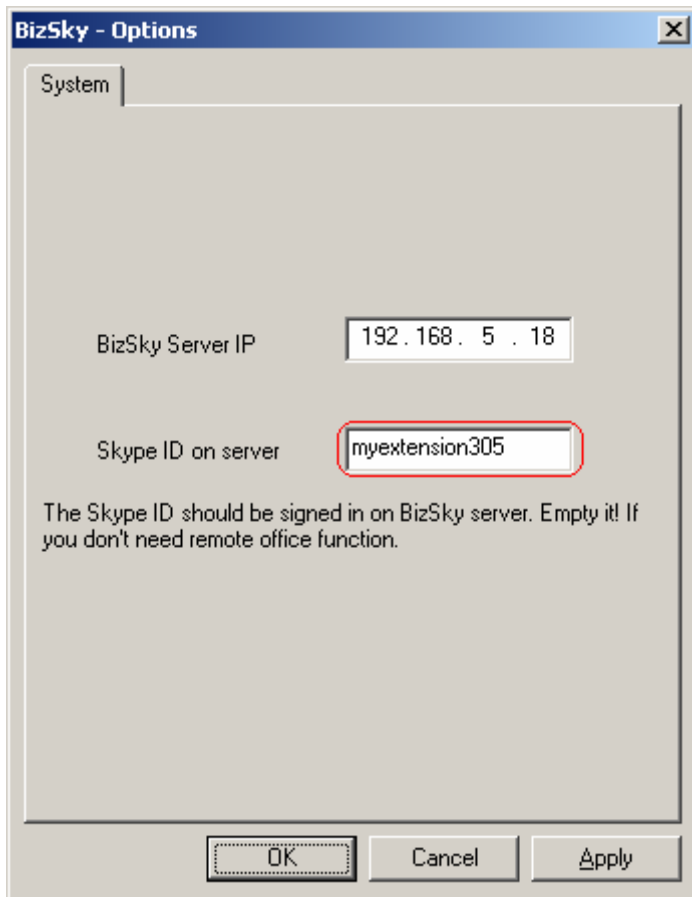


Figure 9

How to use remote office function?

Step 1: Enter Into and Sign Out remote office status

Either operates through BizSky Client or through the actual Skype ID is OK.

First Choice: Operate through BizSky Client

Login BizSky equivalents to the status of enter into remote office. See Figure 10

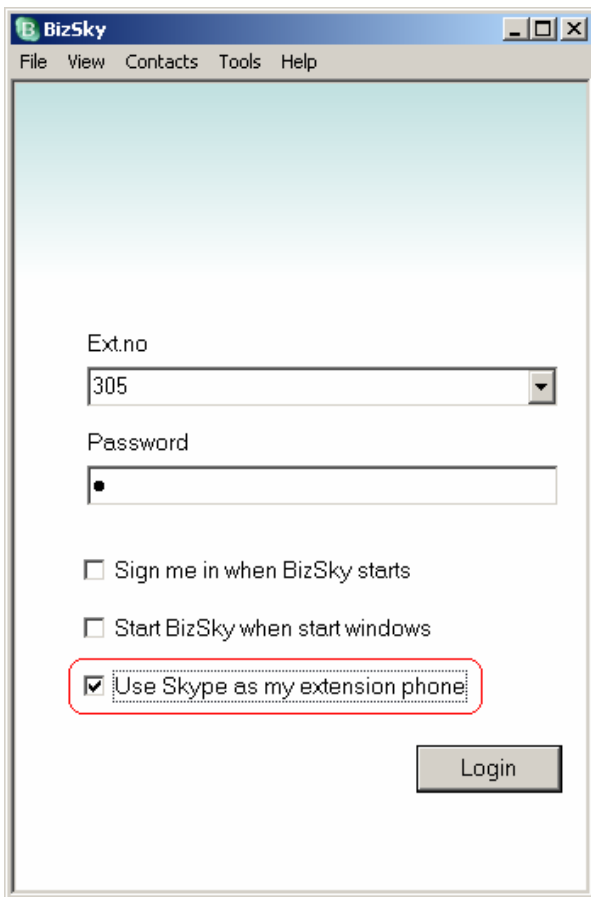


Figure 10

Sign out equivalent to exit remote office status. See Figure 11

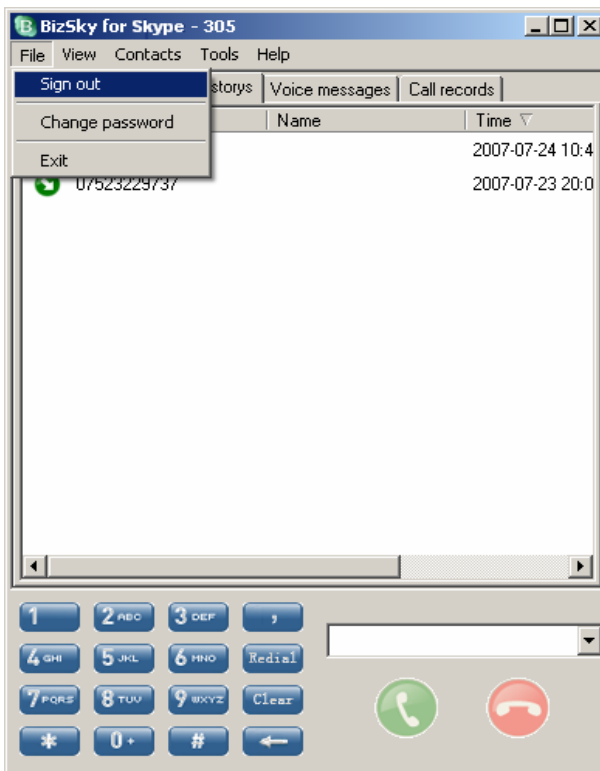


Figure 11

Second Choice: Operate through actual Skype ID

Send a message 'connect' to the proxy Skype ID from the actual Skype, then proxy replies you 'connect ok!', which means enter into remote office status. See Figure 12

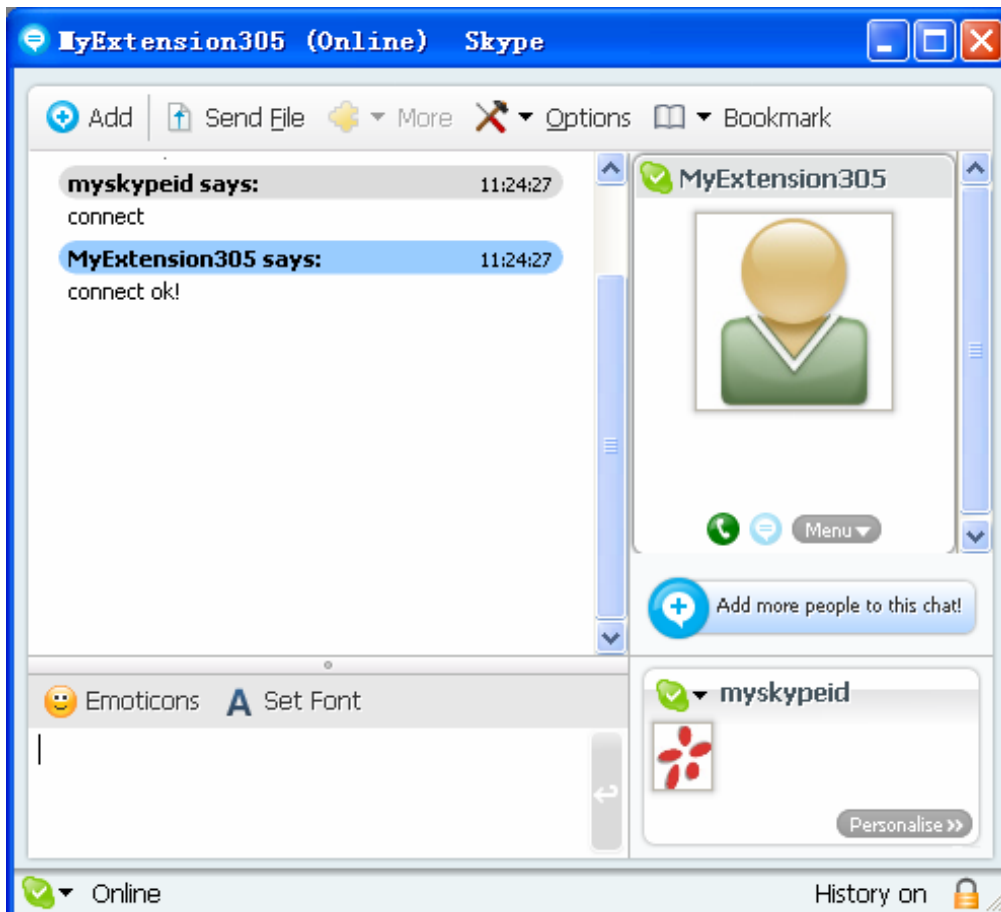


Figure 12

Send a message 'disconnect' to the proxy Skype ID from the actual Skype, then proxy replies you 'disconnect ok!', which means exit from remote office status. See Figure 13

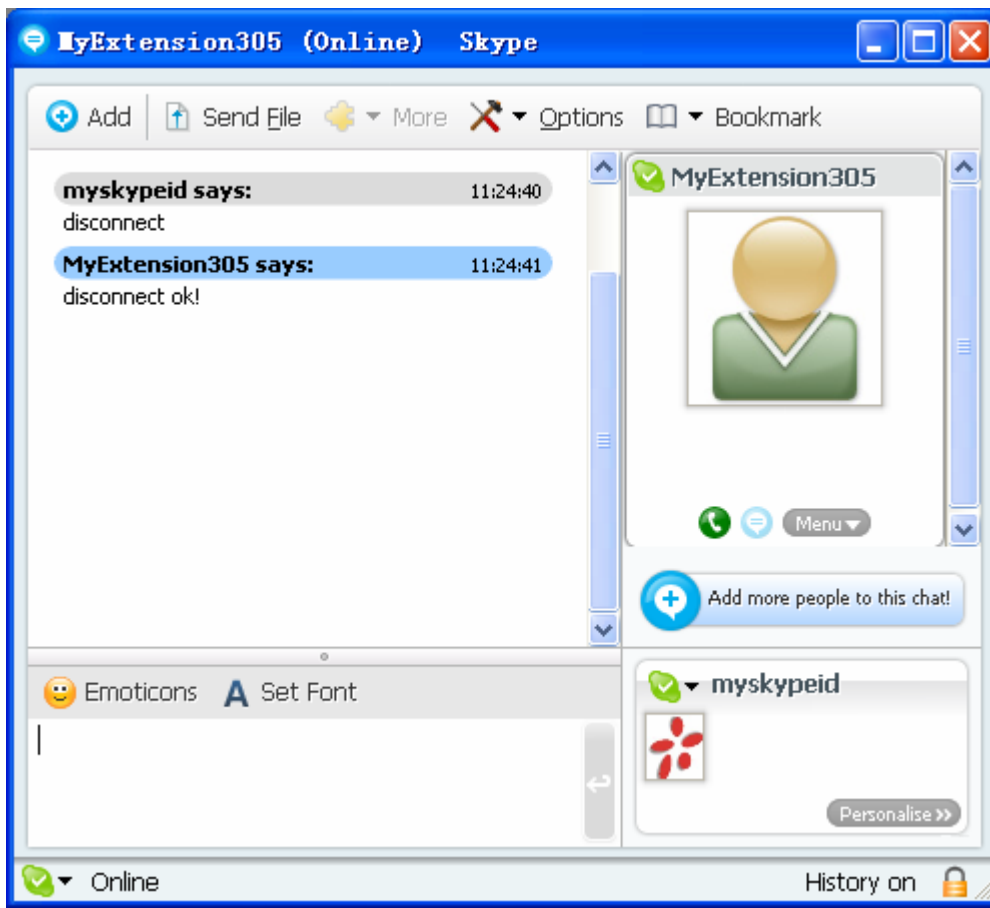


Figure 13

Step 2: Make and Receive calls

2.1 Receive incoming calls from extension phone 305.

When someone calls your office extension 305, your actual Skype rings and shows an incoming call, off-hook to answer it. See Figure 14

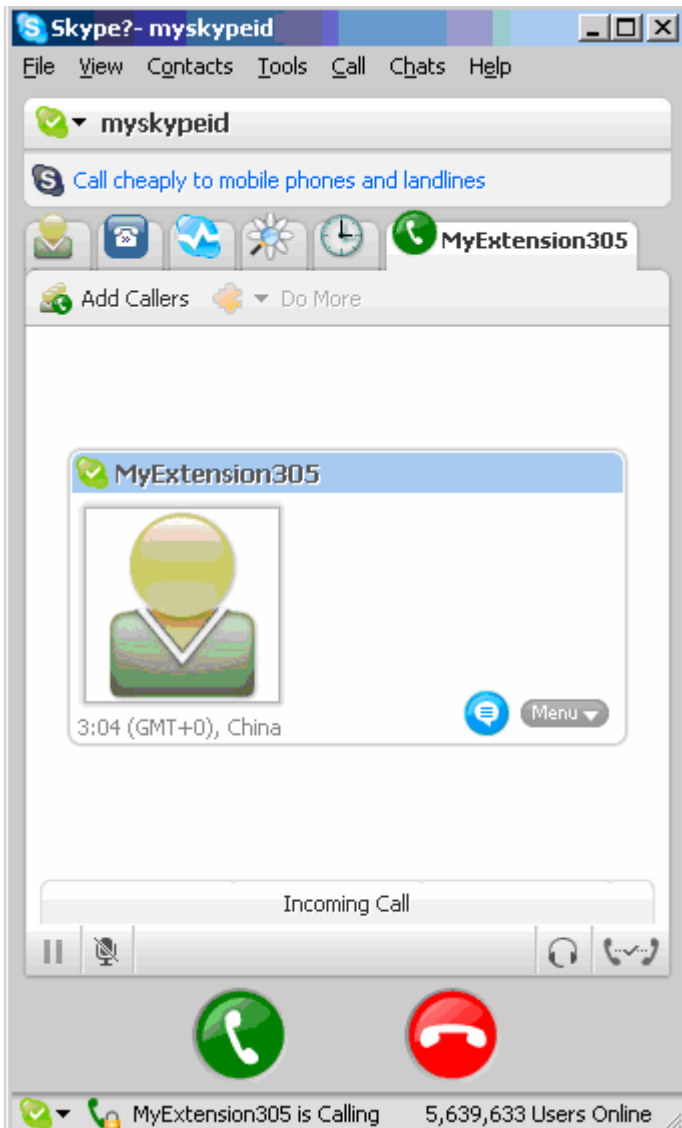


Figure 14

2.2 Make calls through extension phone 305.

2.2.1 Click on the proxy Skype ID 'myextension305' to start a call. See Figure 15

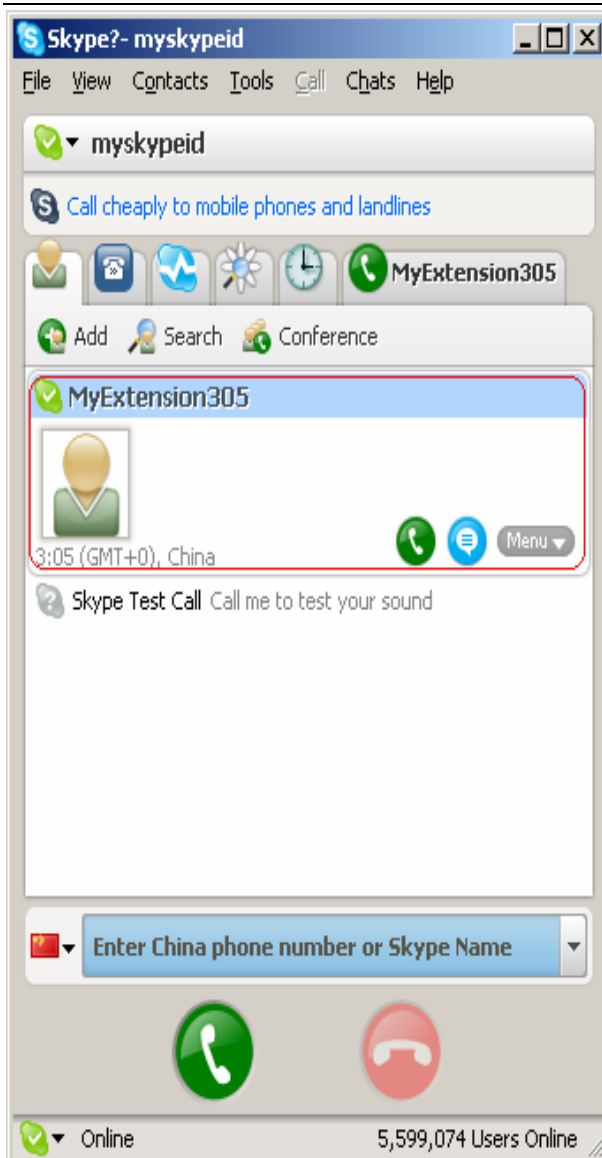


Figure 15-A

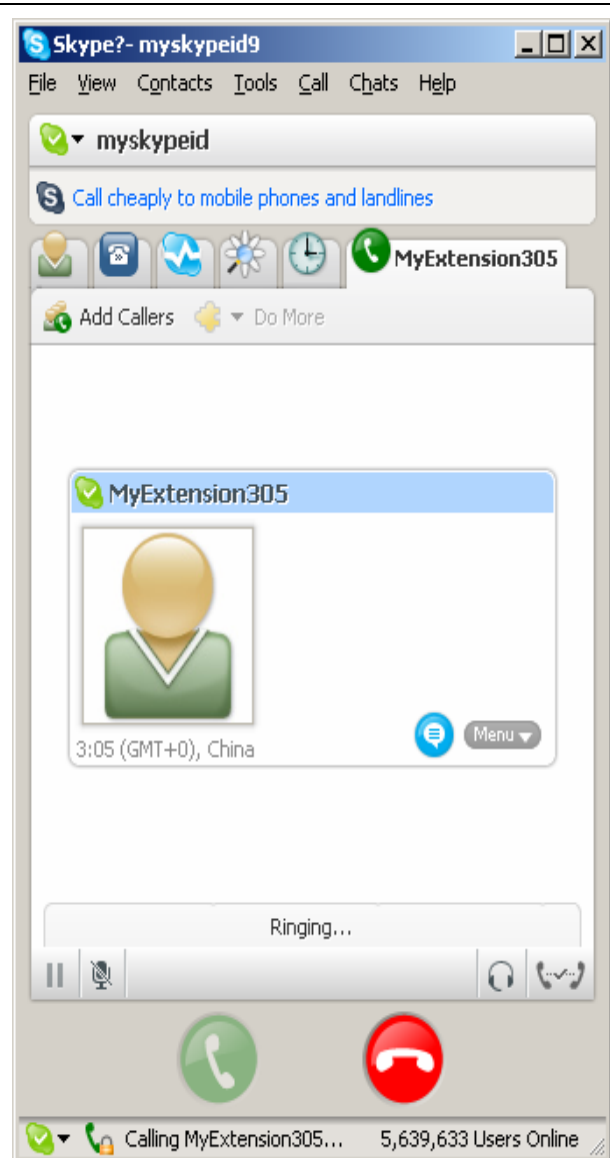


Figure 15-B

2.2.2 Input the telephone number you want to dial out on the appeared panel. See Figure16

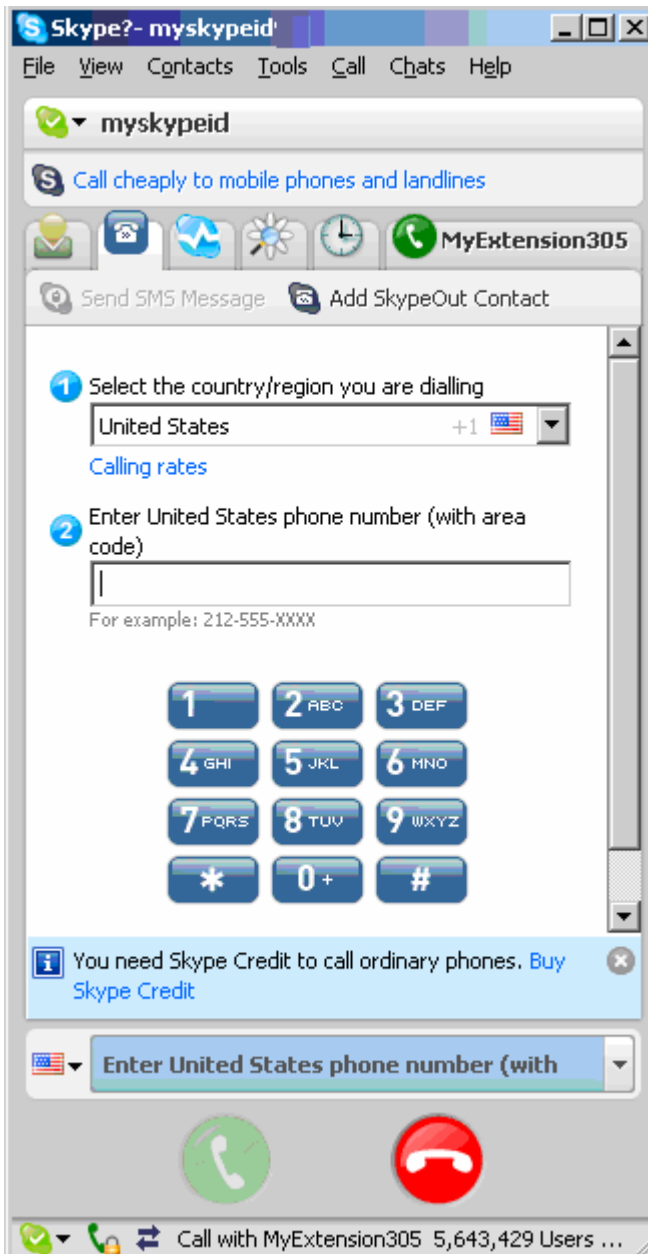


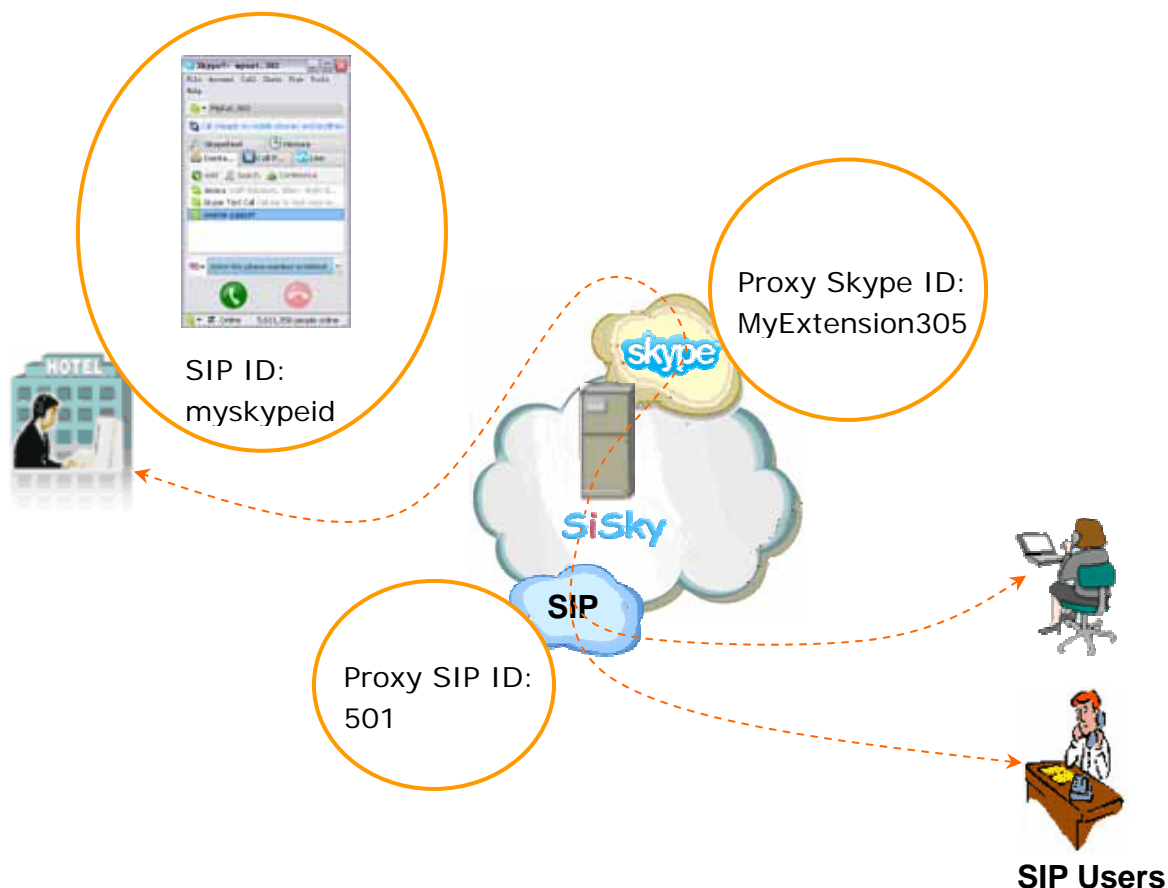
Figure 16

It is same as to dial from office telephone.

Application Sample 3: SiSky Enterprise Edition)

If your company is using IPPBX, SiSky is the suitable for you.

For example, the User's SIP Account is 305, his proxy Skype ID on SiSky Server is 'myextension305', his actual Skype ID is 'myskypeid'.



Setting Steps of Remote Office Function:

1. On the main interface of SiSky, click 'Options' -> 'SIP', double click on User ID: 305, a Window as Figure 17 appears.

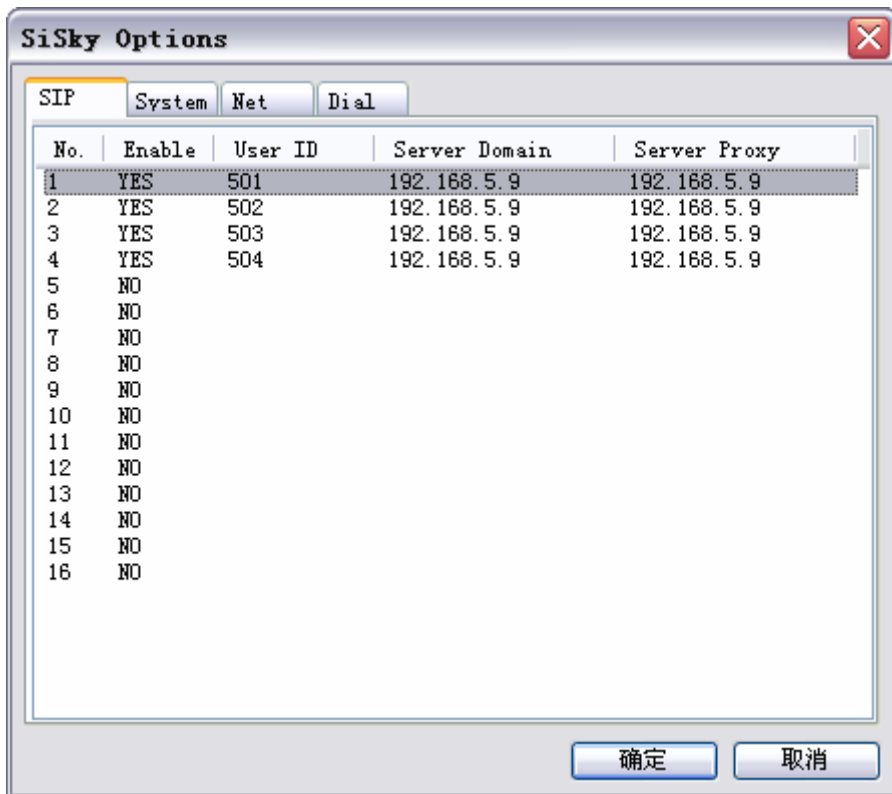


Figure 17

2. Setup Direct-Out, input the actual Skype ID 'myskypeid' that will be used on the remote office: See Figure 18

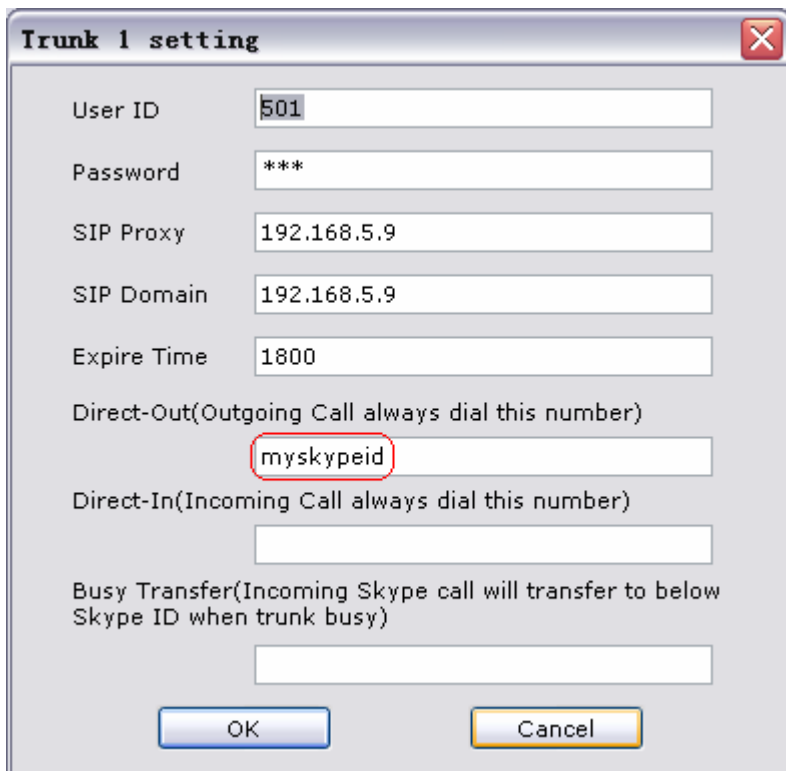


Figure 18

How to use remote office function?

1 Receive incoming calls from extension phone 305.

When someone calls your office extension 305(SIP account), your actual Skype rings and shows an incoming call, off-hook to answer it. See Figure 19

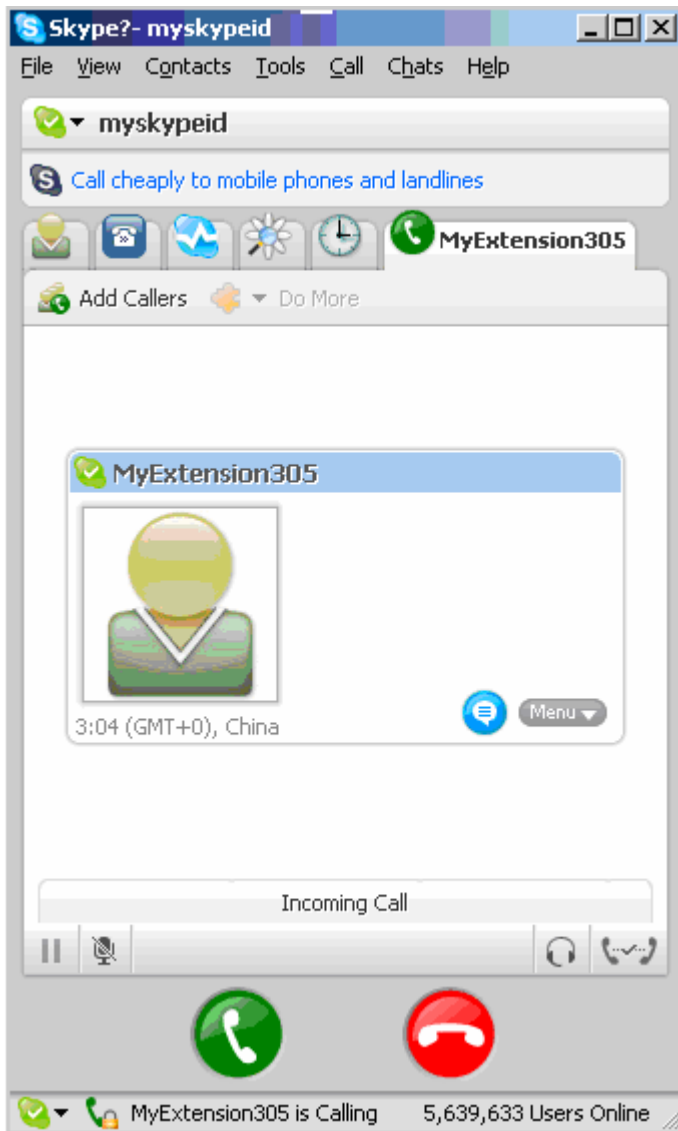


Figure 19

2 Make calls through extension phone 305.

2.1 Click on the proxy Skype ID 'myextension305' to start a call. See Figure 20

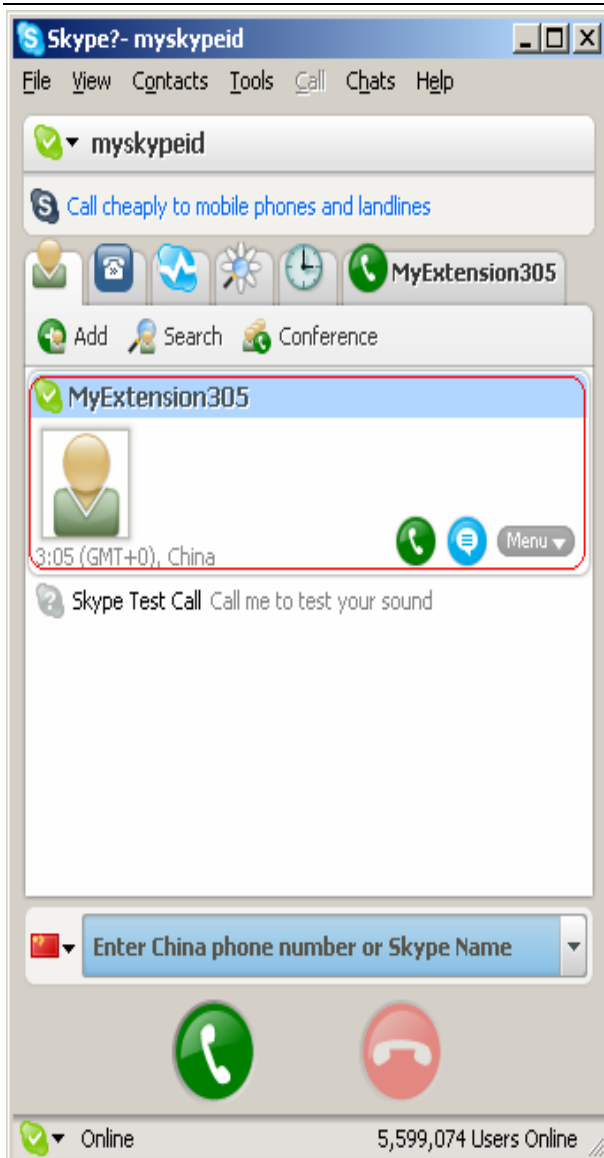


Figure 20-A

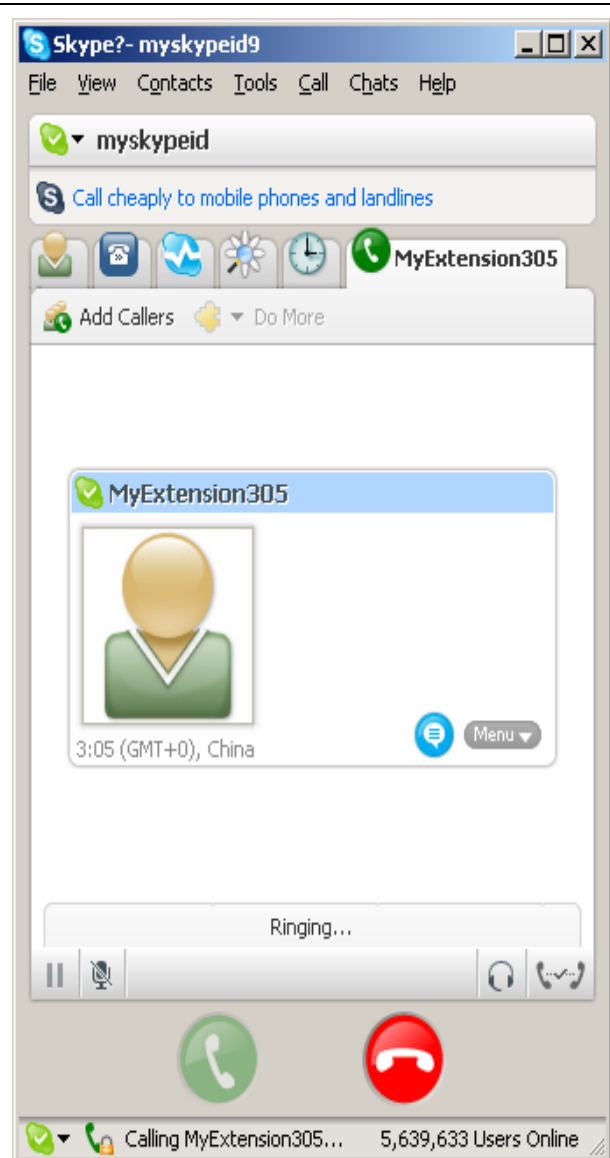


Figure 20-B

2.2 Input the SIP number you want to dial out on the appeared panel. See Figure 21

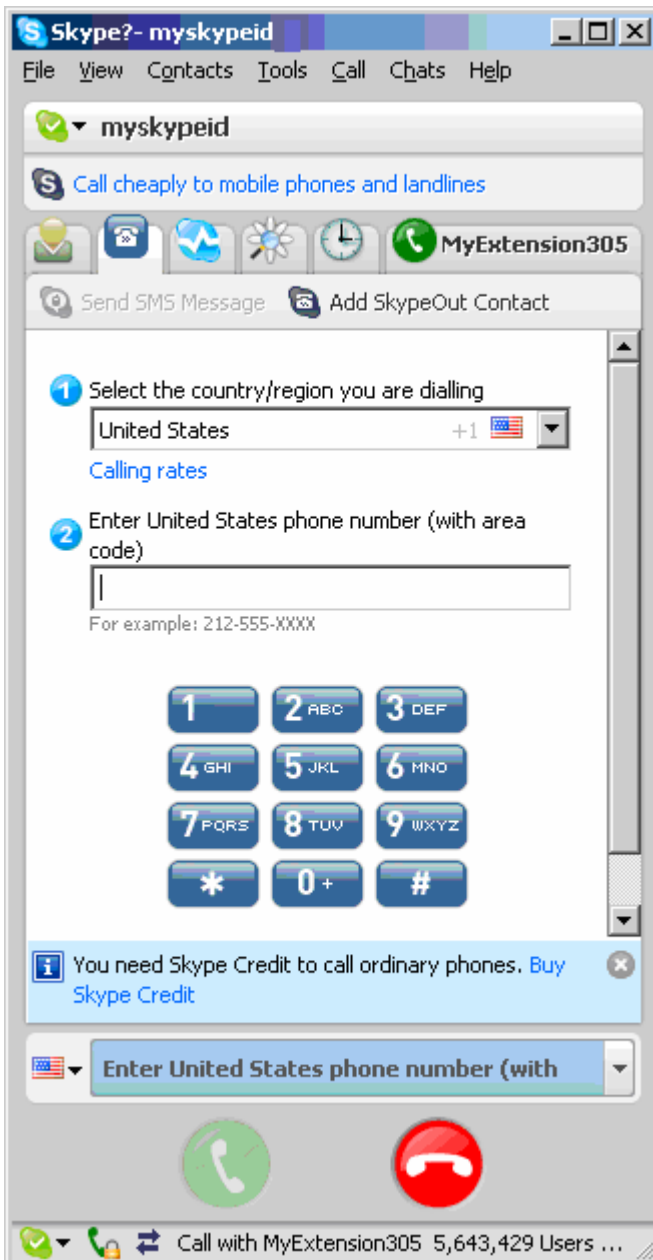


Figure 21

It is same to dial from office telephone.

<The End>