

**SiSky Enterprise Edition generates up to 16 Skype Trunks for Asterisk!**

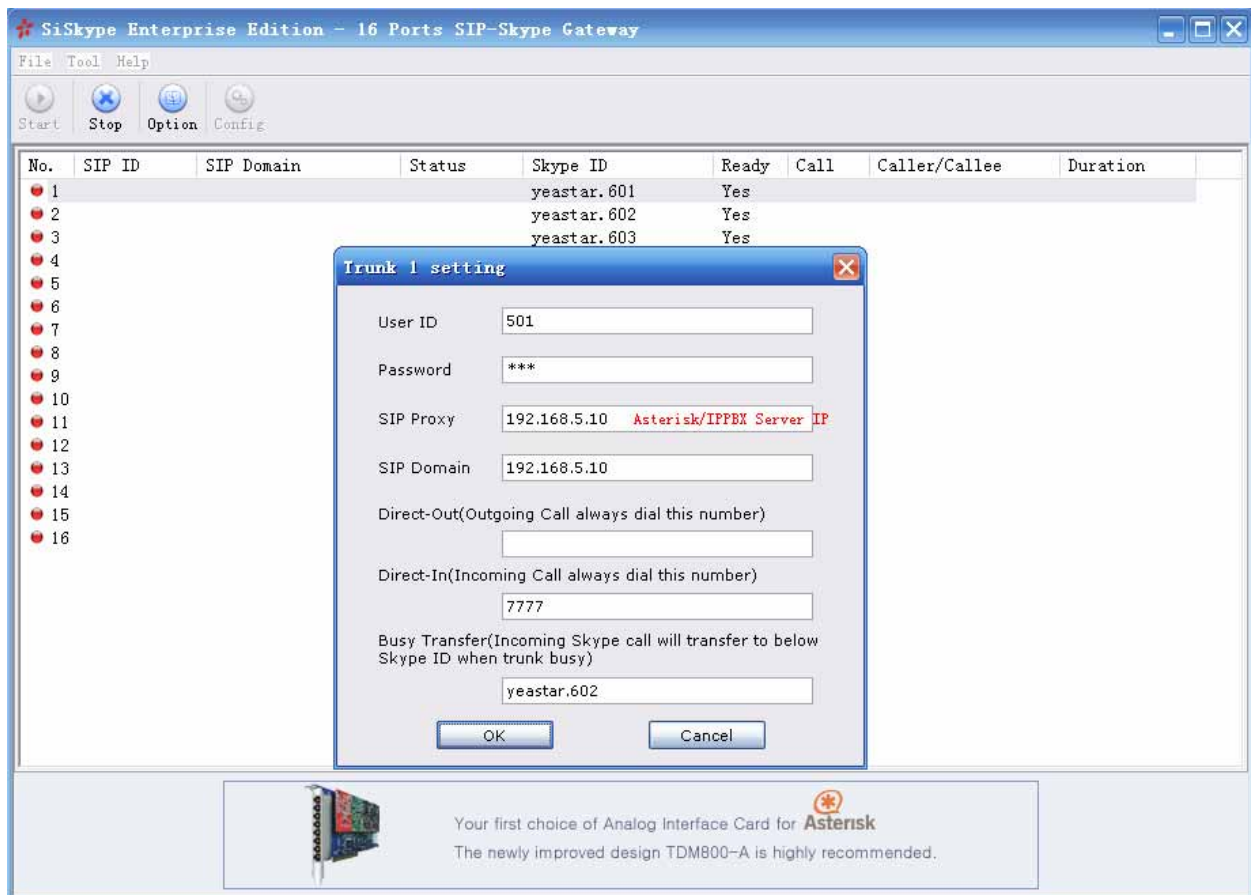
**KEYWORD: SiSky, BizSkype, SIP, Skype, SIP to Skype, Skype to SIP, Trunks, Business, Asterisk, Trixbox, IPPBX,**

**Please run Config Wizard to setup Skype trunks firstly.**

Following instructions are based on the example of 8 channels, and you have create 8 SIP accounts from 501 to 508 for SiSky's SIP Endpoints.

### 1. Set up SIP extensions in SiSky

Double click on 'No.1' in SiSky main window to set up SIP for Port 1.



"SIP Domain、SIP Proxy": IP or hostname of Asterisk Server

"User ID": 501

"Password": 501

"Direct-In":

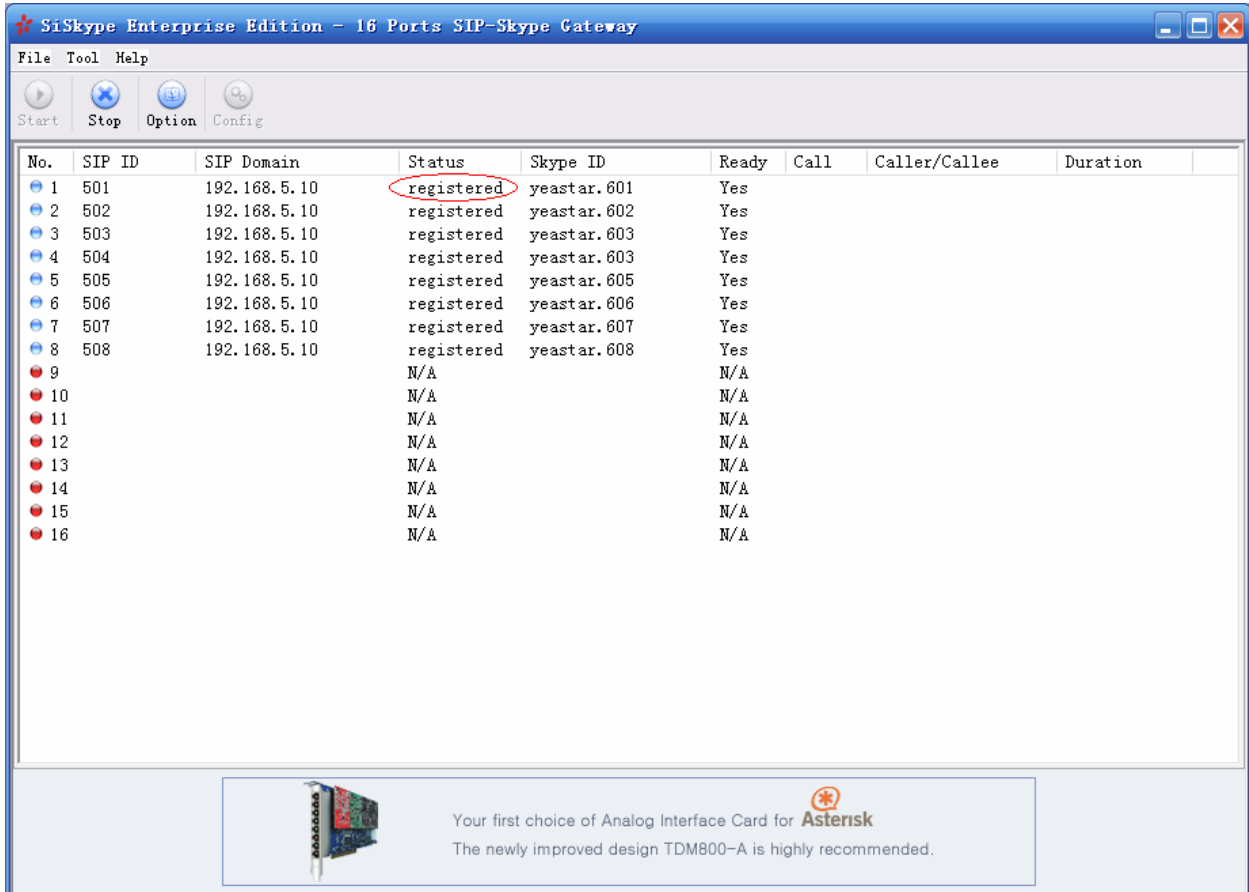
"Busy Transfer": <Only one Skype ID, because it can pass on one by one>

*Notes1: You can setup Direct-In '7777', and incoming call from Skype trunk will be same as it from SIP trunk. Because In Asterisk, dial 7777 means to simulate an incoming call. If Direct-In number is empty, incoming call from Skype trunk will get auto attendant from SiSky.*

Notes2: You can setup Busy Transfer 'yeastar.602', and incoming call from Skype trunk 'yeastar.601' will transfer to next Skype trunk 'yeastar.602' if Skype trunk 'yeastar.601' busy.

For Example: Setup Busy Transfer 'yeastar.602' for Trunk 1, Setup Busy Transfer 'yeastar.603' for Trunk 2, Setup Busy Transfer 'yeastar.604' for Trunk 3, and go on.

If SIP Status is 'Registered', you have successfully finished SIP port 1 setting.



The screenshot shows the SiSky Enterprise Edition - 16 Ports SIP-Skype Gateway interface. The main window displays a table with the following columns: No., SIP ID, SIP Domain, Status, Skype ID, Ready, Call, Caller/Callee, and Duration. The 'Status' column for the first eight rows is 'registered', which is circled in red. The 'Ready' column for these rows is 'Yes'. The remaining rows (9-16) have a status of 'N/A' and 'Ready' of 'N/A'.

No.	SIP ID	SIP Domain	Status	Skype ID	Ready	Call	Caller/Callee	Duration
1	501	192.168.5.10	registered	yeastar.601	Yes			
2	502	192.168.5.10	registered	yeastar.602	Yes			
3	503	192.168.5.10	registered	yeastar.603	Yes			
4	504	192.168.5.10	registered	yeastar.603	Yes			
5	505	192.168.5.10	registered	yeastar.605	Yes			
6	506	192.168.5.10	registered	yeastar.606	Yes			
7	507	192.168.5.10	registered	yeastar.607	Yes			
8	508	192.168.5.10	registered	yeastar.608	Yes			
9			N/A		N/A			
10			N/A		N/A			
11			N/A		N/A			
12			N/A		N/A			
13			N/A		N/A			
14			N/A		N/A			
15			N/A		N/A			
16			N/A		N/A			

At the bottom of the window, there is a promotional banner for Asterisk Analog Interface Card (TDM800-A) with the text: "Your first choice of Analog Interface Card for Asterisk. The newly improved design TDM800-A is highly recommended."

**Set other ports as same steps as setting No. 1**

**Now you have successfully finished configuring SiSky Enterprise Edition.**