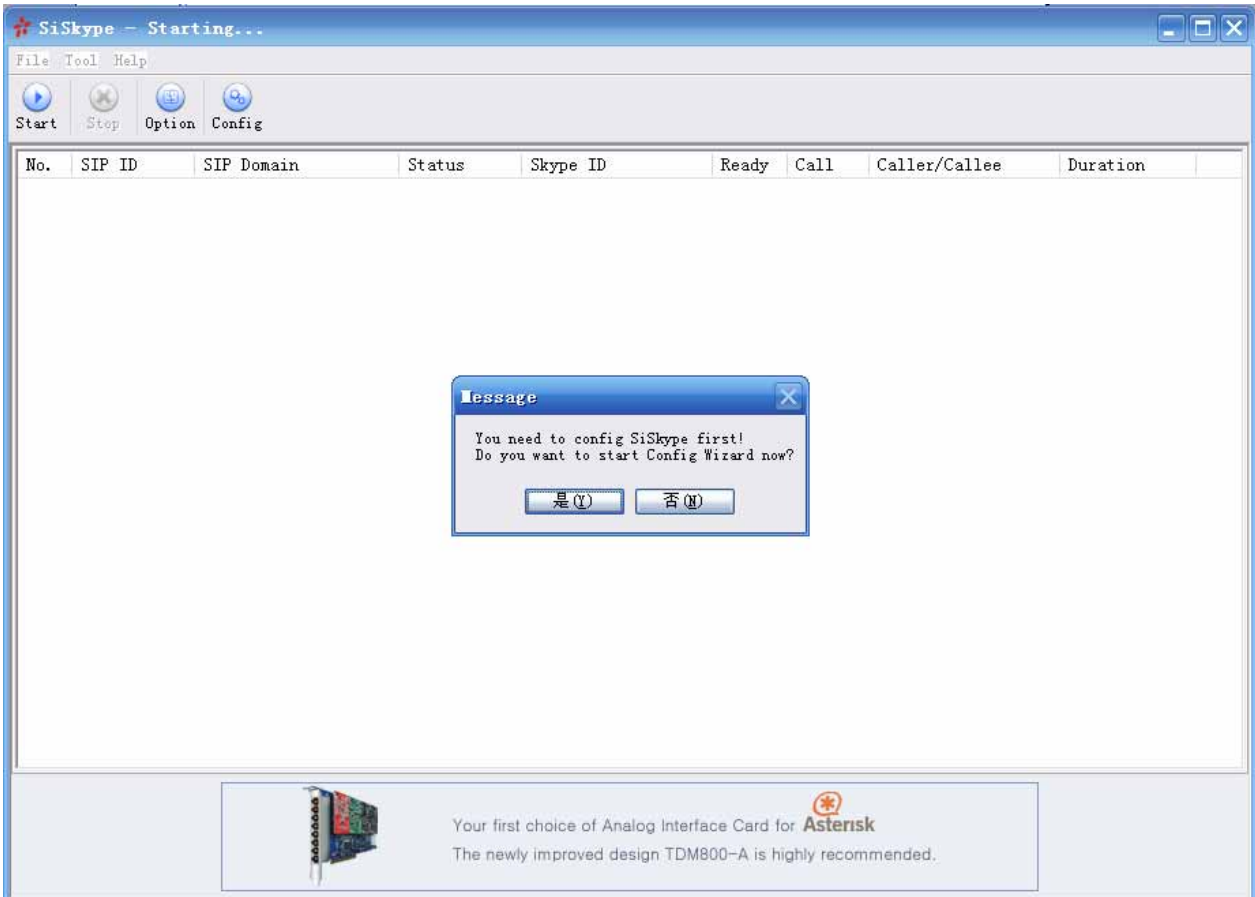


SiSky Enterprise Edition generates up to 16 Skype Trunks for Asterisk!

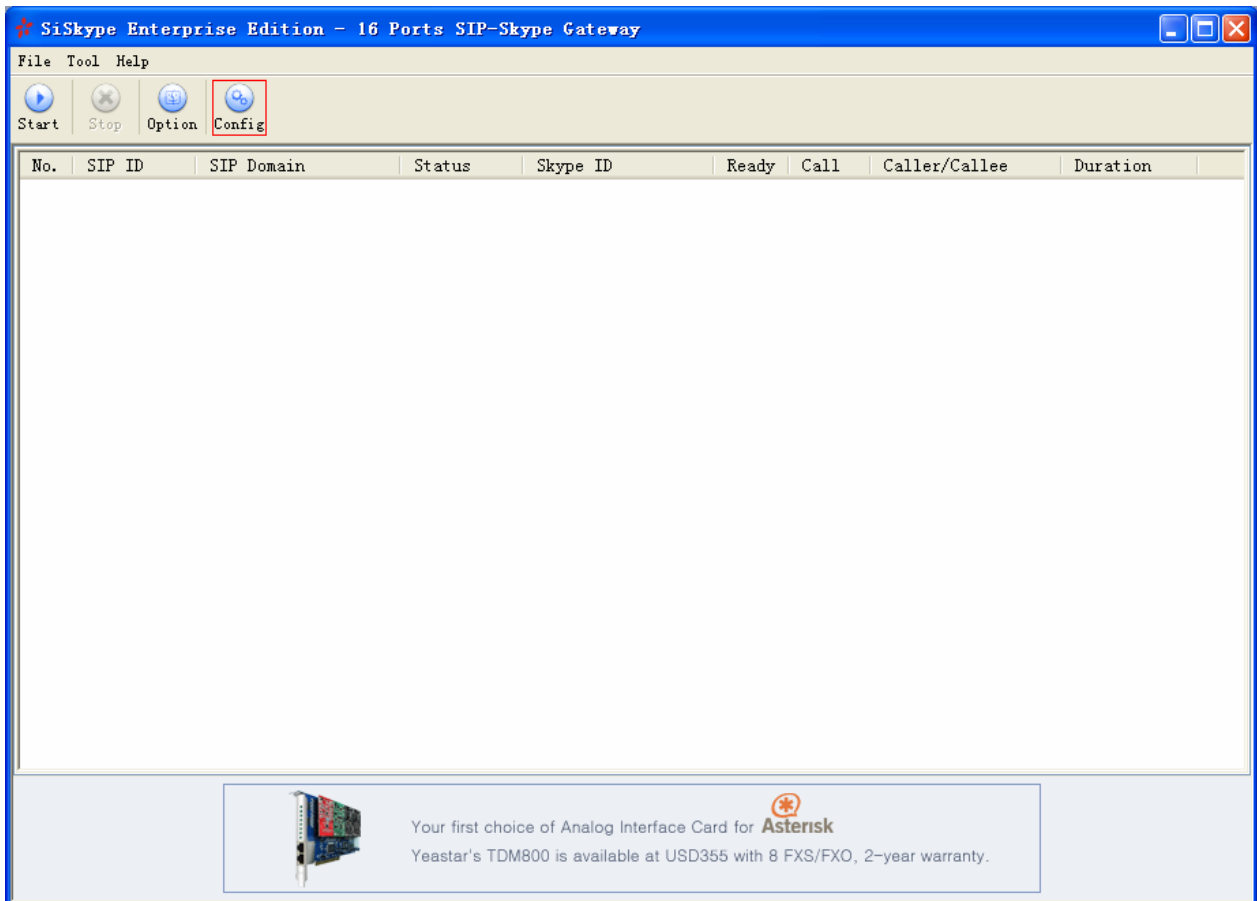
Configure the SiSky Enterprise Edition by Wizard

KEYWORD: SiSky, BizSkype, SIP, Skype, SIP to Skype, Skype to SIP, Trunks, Business, Asterisk, Trixbox, IPPBX,

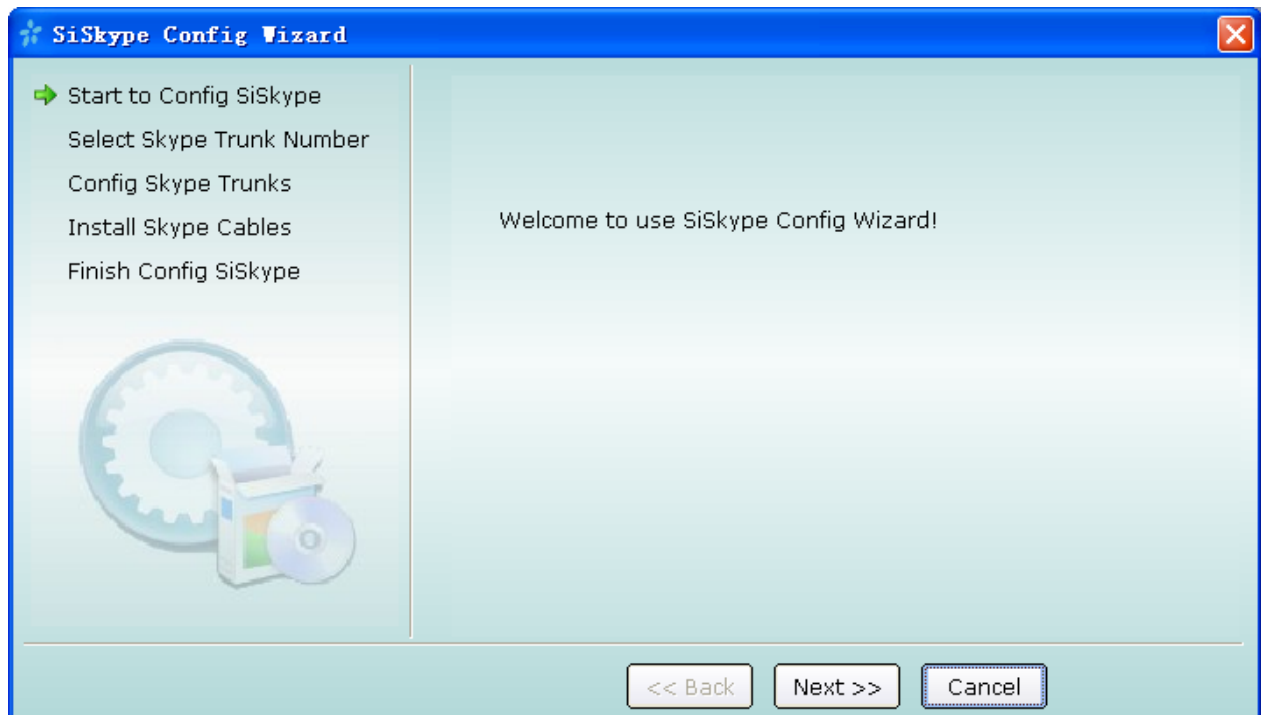
When you first run the SiSky, a window below popup, click 'Yes' to start config wizard.



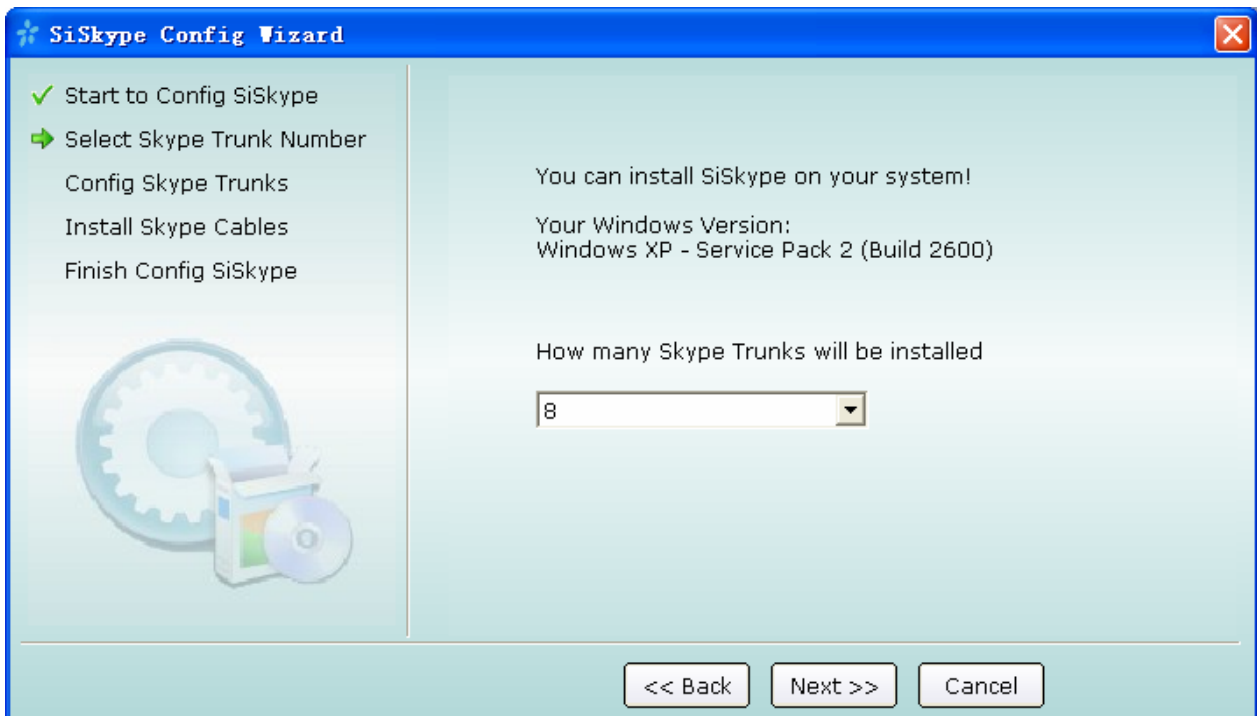
Or else click 'Stop' and then Click 'Config' to Start SiSky Config Wizard.



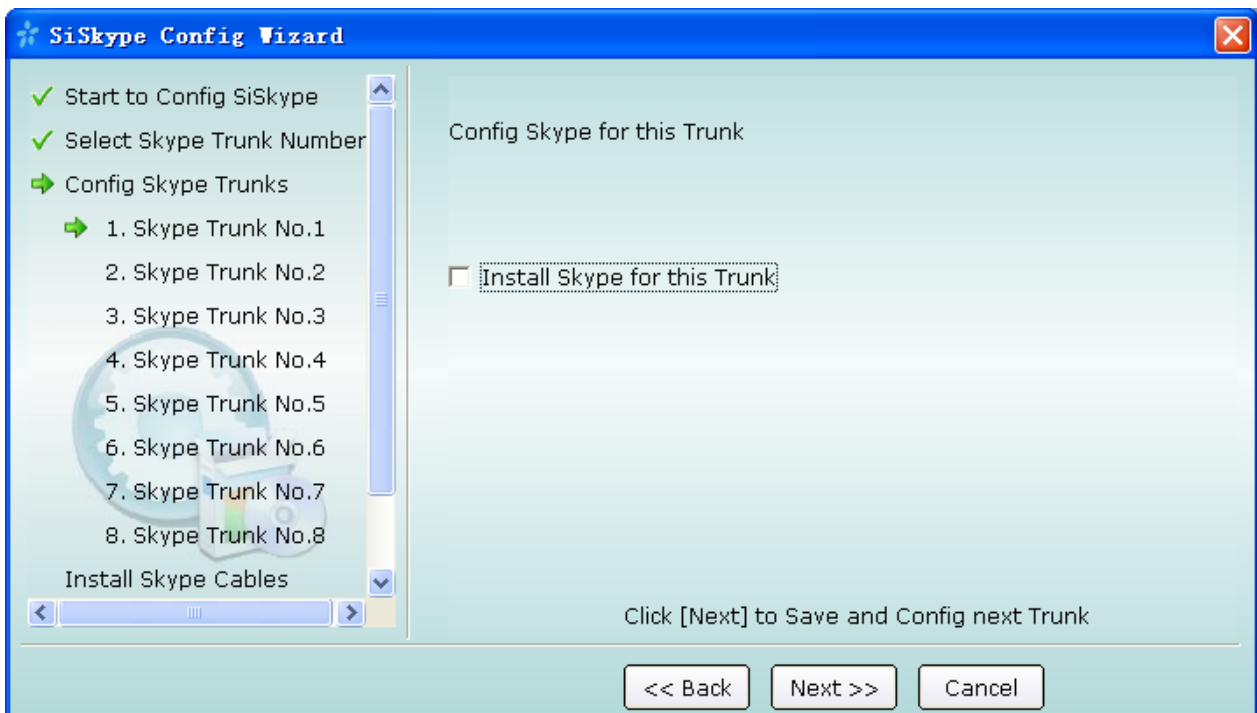
Step 1: Click 'Next'



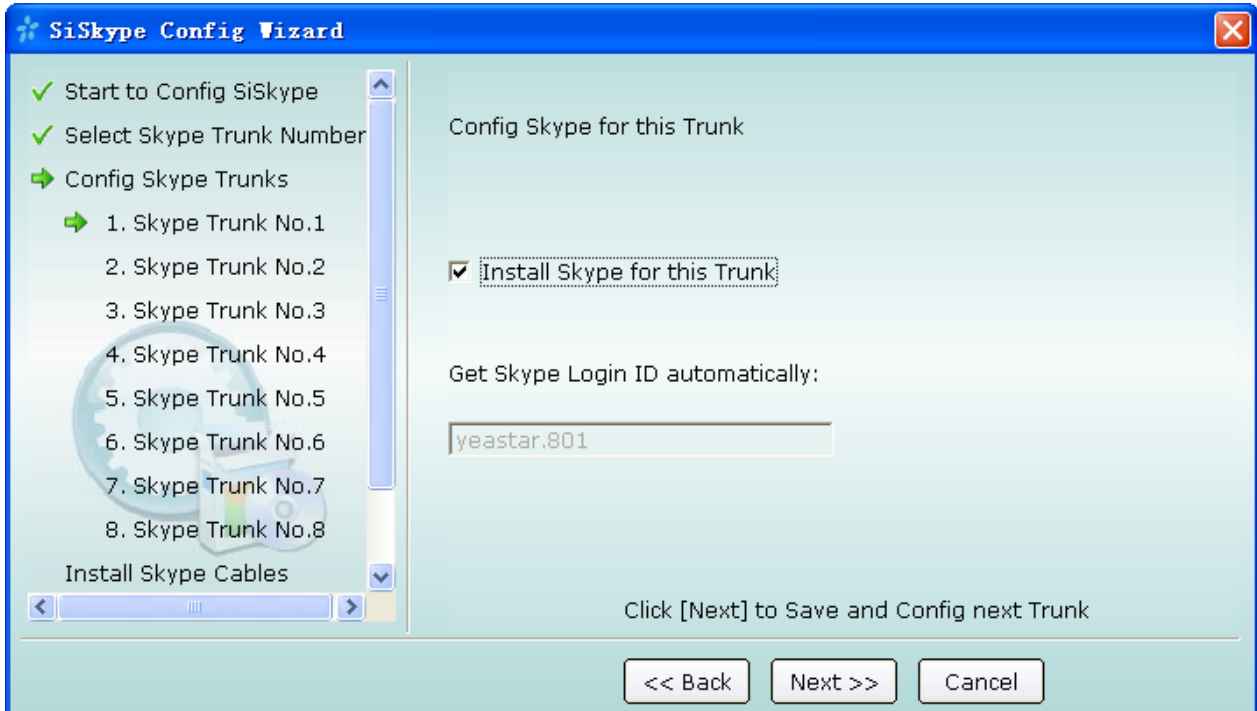
Step 2: Select Skype trunk number and then 'Next'



Step 3: Click 'Install Skype for thisTrunk' and you will find a Skype

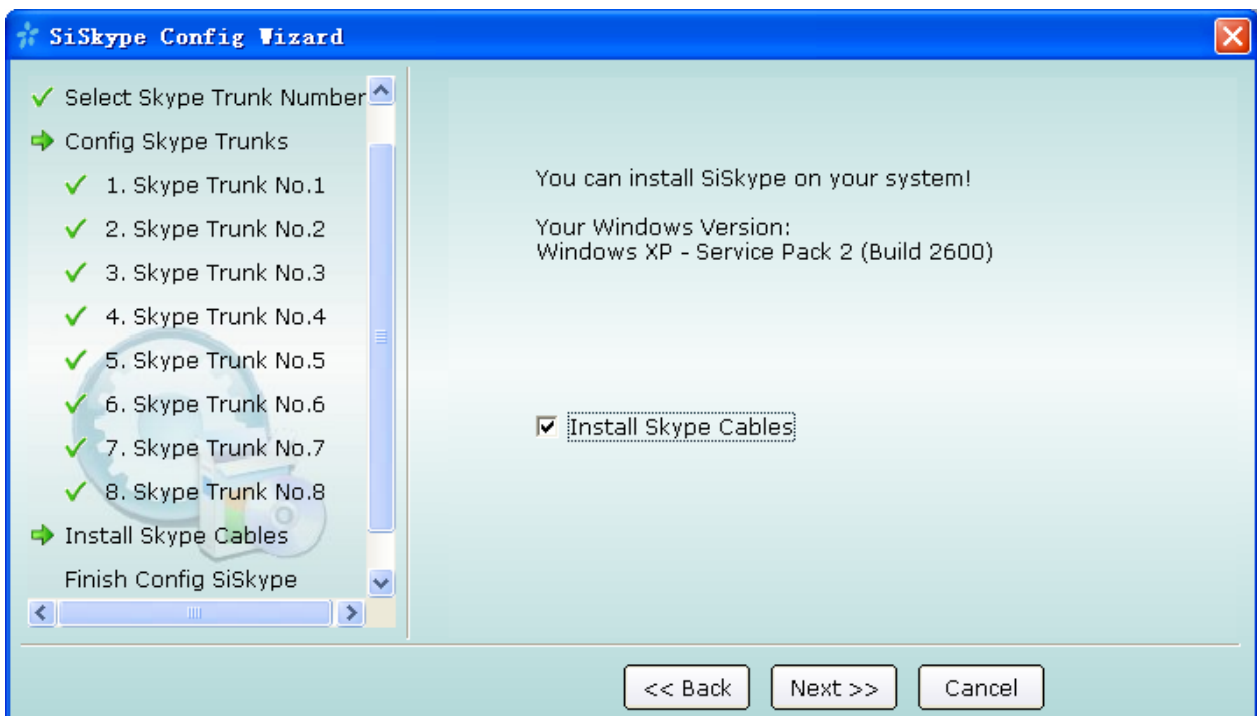


**Create a new Account or Input existing Account, then Signin Skype.
After Signin successful, click 'Next' to config next port.**



Notes: Same operation as Step 3 to install and config other Skype for the rest trunks. You should use unique Skype ID for each trunk.

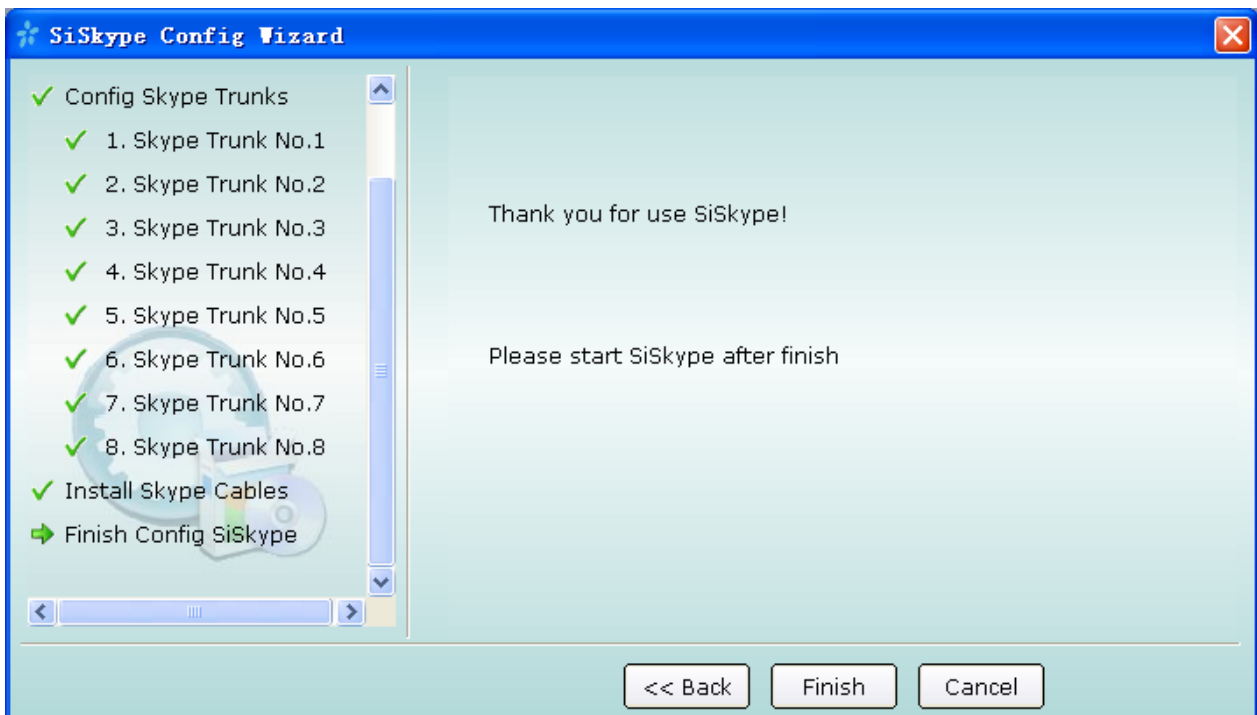
Step 4: Check 'Install Skype Cables' and then 'Next'



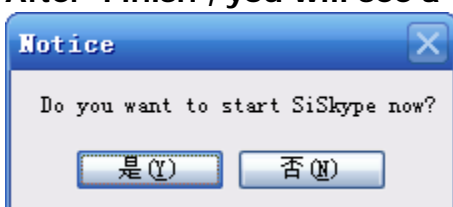
Step 4-a: Maybe you will find the prompt again, click 'Continue Anyway'



Step 5: 'Finish' configuring.



After 'Finish', you will see a window below, click 'Yes'.



Now you have successfully finished configuring Skype trunks, Next step you should config SiSky's SIP Endpoints.

(FINISH)