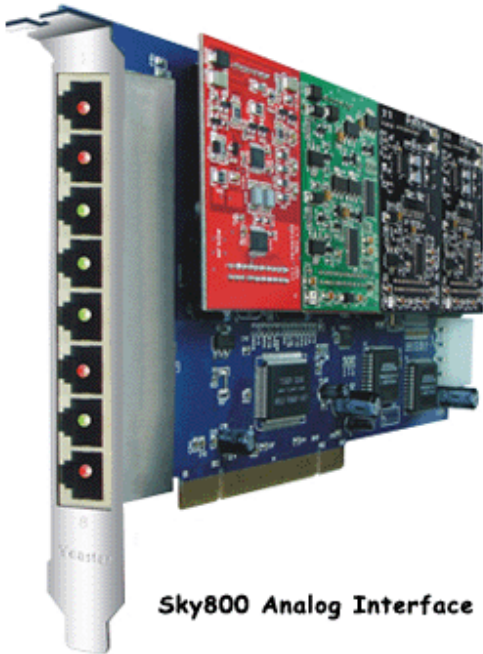


SKY 800 Analog Interface Card

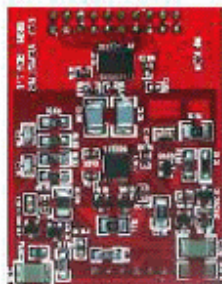
The Yeastar SKY800 is a PCI 2.2 card that supports FXS and FXO station interfaces for connecting analog telephones and analog POTS/PSTN lines through a PC. SKY800 is more specially designed to support Windows XP/2003. It's the designed hardware part for ExSky and BizSky solutions.



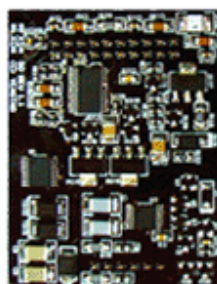
Sky800 Analog Interface Card



S2 Module



O2 Module



SO Module

Target Applications

- Small Office Home Office (SOHO) applications
- Choice of ITSP's services
- Free calls between branch offices
- Receive office calls at home

Standard Package

- TDM800 mother card
- Up to 4 daughter modules;
- 4 line cables and 1 power cable
- TDM800 Instruction

Interface Standard

- PCI 2.2 with 3.3- or 5-volt power
- 4P hard disk power supply with 12-volt
- FXS relevant RJ11 port supply DC Feed -48V and loop current 20mA

Environment Conditions

- Operation Range: 0° to 50°C, 32° to 122° F
- Storage Range: -20° to 65°C, 4° to 149° F
- Humidity: 10-90% non-condensing

Hardware Requirements

- 500-Mhz Pentium III or better with 64MB RAM
- Available PCI Slot

Warranty: Yeastar is responsible for the quality of all cards and modules. For the end users, included with the purchase of the SKY800 is 30 days of email technology support to get your card running, 2 years and a half warranty of hardware performance. For the agents, Yeastar will provide real-time service and good support.