

NeoGate

TB400

User Manual

Version 6.10.0.07

Yeastar Technology Co., Ltd

Table of Contents

1. INTRODUCTION.....	3
1.1 Hardware Specification.....	3
1.1.1 Exterior Appearance.....	3
2. SYSTEM SET UP.....	5
2.1 Installation of BRI Module.....	5
2.2 Ethernet Line Connection.....	5
2.3 Power Supply Connection.....	5
3. NEOGATE CONFIGURATION.....	6
3.1 Manager Login.....	6
3.2 BRI Settings.....	6
3.2.1 Module List.....	6
3.2.2 BRI Settings.....	7
3.2.2.1 Basic Settings.....	7
3.2.2.2 CallerID Prefix Settings.....	8
3.2.2.3 Advanced Settings.....	8
3.3 VOIP Settings.....	10
3.3.1 SIP Settings.....	10
3.3.1.1 SIP Account.....	10
3.3.1.2 Register to SIP.....	11
3.3.1.3 Service Provider.....	12
3.3.1.4 Advanced Setting.....	12
3.3.2 Advanced Settings.....	13
3.4 Route List.....	17
3.4.1 Manage Calling Routes.....	17
3.4.2 DOD List.....	19
3.4.3 Blacklist.....	20
3.5 System Settings.....	20
3.5.1 Options.....	20
3.5.2 Network Setting.....	21
3.5.3 Password Settings.....	23
3.5.4 Date and Time.....	23
3.5.5 Backup and Restore.....	24
3.5.6 Reset and Reboot.....	24
3.5.7 Firmware Update.....	25
3.6 Reports.....	26
3.6.1 Call Logs.....	26
3.6.2 System Info.....	26
4. APPLICATION.....	28

1. Introduction

NeoGate Gateway for Maximum Efficiency & Cost Savings

NeoGate TB400 is a device for connecting BRI Network to VoIP Network directly, which can support two-way communication: BRI to VoIP or VoIP to BRI.

It is the best solution ever to connect IP-based telephone systems, soft switches, and IP-PBXs to BRI network.

1.1 Hardware Specification

1.1.1 Exterior Appearance

1) Front Side



Figure 1-1 NeoGate TB400 Front Panel Picture

No.	Identifying
①Power	Green shining: Connected, correct function.
②RUN	Green Light: Indicates the server system is in working order
③Ready	Green Light: Indicates the system is ready.
④BRI 1	Orange Shining: BRI 1 connected

⑤BRI 2	Orange Shining: BRI 2 connected
⑥BRI 3	Orange Shining: BRI 3 connected
⑦BRI 4	Orange Shining: BRI 4 connected

2) Back Side



Figure 1-2 NeoGate TB400 Back Side

2. System set up

2.1 Installation of BRI Module.

Open the case of NeoGate, adjust the pins to the slots and insert then insert the spins into the slots.

Note1: Please turn off the device when installing the modules.

2.2 Ethernet Line Connection

NeoGate provides two 10/100M Ethernet ports with RJ45 interface and LED indicator. Plug Ethernet line into NeoGate's Ethernet port, and then connect the other end of the Ethernet line with a hub, switch, router, LAN or WAN. Once connected, check the status of the LED indicator. The green LED indicates the port is properly connected.

2.3 Power Supply Connection

NeoGate utilizes the high-performance switch power, which supply the enough voltage and electrical energy that required by NeoGate system.

AC Input: 100~240V

DC Output: 12V,1A

Please follow the steps below to connect the NeoGate unit to a power outlet:

1. Connect the small end of the power cable to the power input port on the NeoGate back panel, and plug the other end of the cable into a 100VAC power outlet.
2. Check the Power LED on the front panel. A solid green LED indicates that power is being supplied correctly.

3. NeoGate Configuration

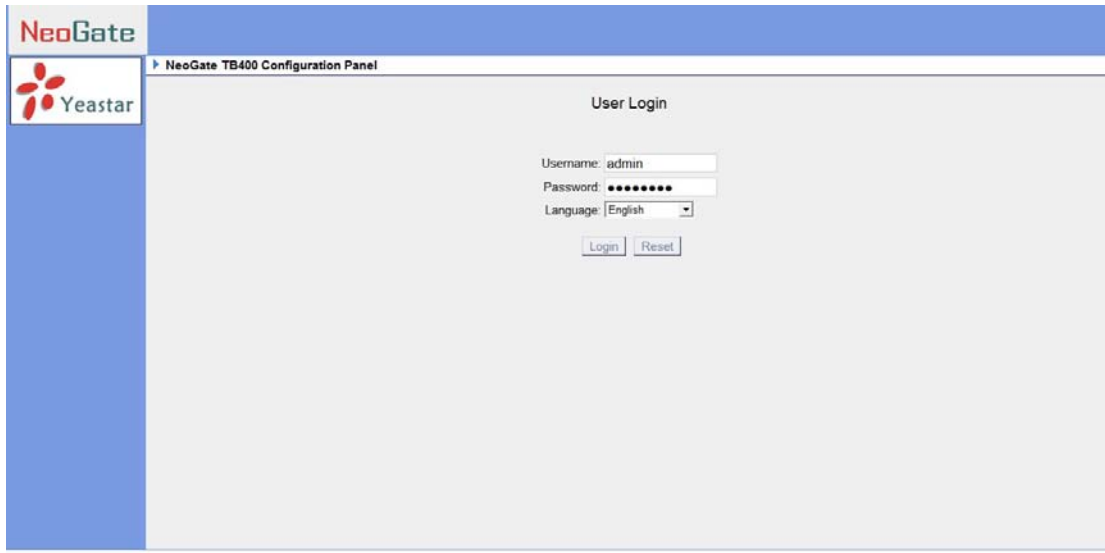
3.1 Manager Login

From your web browser, input the IP address of the NeoGate server.
If this is the first time you are configuring NeoGate, please use the default settings below:

IP Address: <http://192.168.5.150>

Username: **admin**

Password: **password**



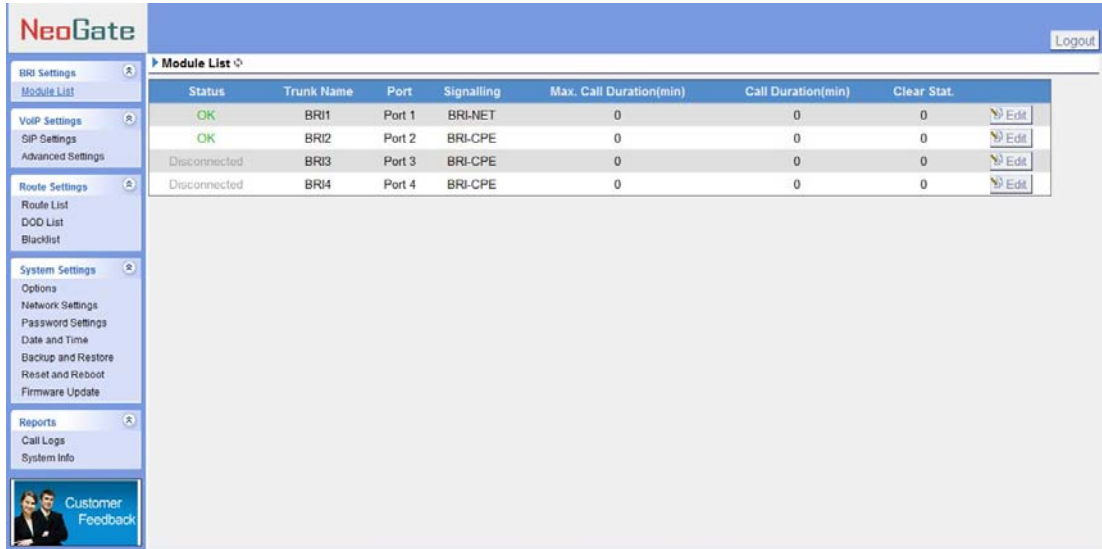
The screenshot shows the NeoGate TB400 Configuration Panel. The page has a blue header with the 'NeoGate' logo and a blue sidebar with the 'Yeostar' logo. The main content area is titled 'NeoGate TB400 Configuration Panel' and contains a 'User Login' section. The login form includes three input fields: 'Username' with the value 'admin', 'Password' with masked characters, and 'Language' with a dropdown menu set to 'English'. Below the fields are 'Login' and 'Reset' buttons. At the bottom of the page, there is a copyright notice: 'Copyright © 2010-2011 Yeostar Technology, Co., Ltd. All Rights Reserved'.

Figure 3-1

3.2 BRI Settings

3.2.1 Module List

You can check the information of the status of BRI modules and trunks. Click edit to configure the trunk.



Status	Trunk Name	Port	Signalling	Max. Call Duration(min)	Call Duration(min)	Clear Stat.	
OK	BRI1	Port 1	BRI-NET	0	0	0	Edit
OK	BRI2	Port 2	BRI-CPE	0	0	0	Edit
Disconnected	BRI3	Port 3	BRI-CPE	0	0	0	Edit
Disconnected	BRI4	Port 4	BRI-CPE	0	0	0	Edit

Copyright © 2010-2011 Yeastar Technology, Co., Ltd. All Rights Reserved.

Figure 3-2

NeoGate Status Description:

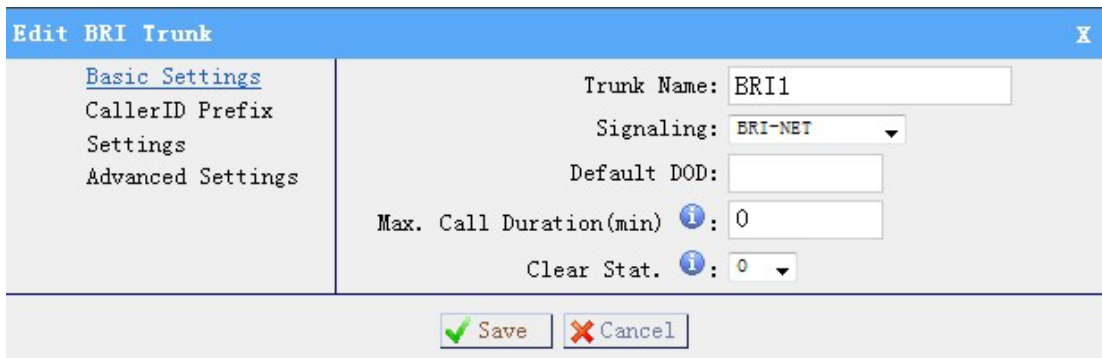
Status

OK: The port is idle.

Disconnected: No line connects to this port.

3.2.2 BRI Settings

3.2.2.1 Basic Settings



Edit BRI Trunk	
Basic Settings CallerID Prefix Settings Advanced Settings	Trunk Name: <input type="text" value="BRI1"/> Signaling: <input type="text" value="BRI-NET"/> Default DOD: <input type="text"/> Max. Call Duration(min) <i>i</i> : <input type="text" value="0"/> Clear Stat. <i>i</i> : <input type="text" value="0"/>
<input type="button" value="Save"/> <input type="button" value="Cancel"/>	

Figure 3-3

Trunk Name: A name of this Trunk. Ex: 'BRI1' etc.

Signaling: You can choose the signaling of BRI. It supports BIR-NET, BRI-NET-PTMP, BRI CPE, BRI-CPE-PTMP.

Default DOD: You can set the default DOD here.

Max. Call Duration (min)/Per Month: Defines the maximum call duration within a month through this SIM card. (0 it means unlimited)

Clear Stat: Set the day in a month on which the statistics data on Max. Call

Duration are deleted. This parameter is ignored if set to 0.

3.2.2.2 CallerID Prefix Settings

You can add prefix to the incoming call here.

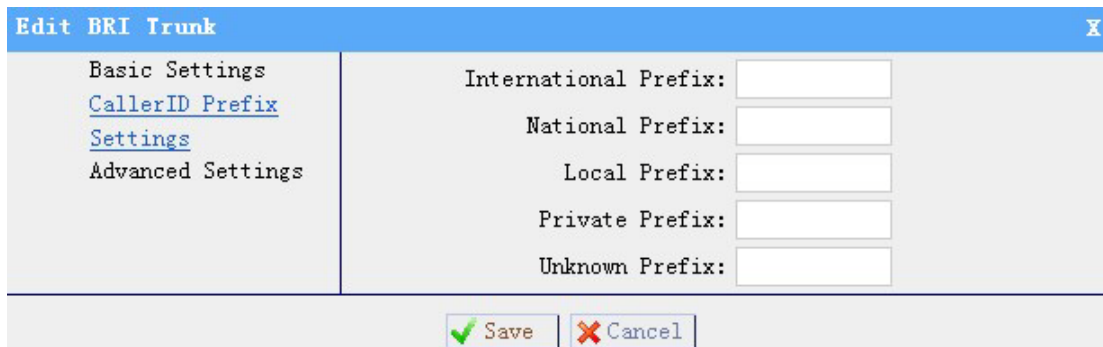


Figure 3-4

3.2.2.3 Advanced Settings

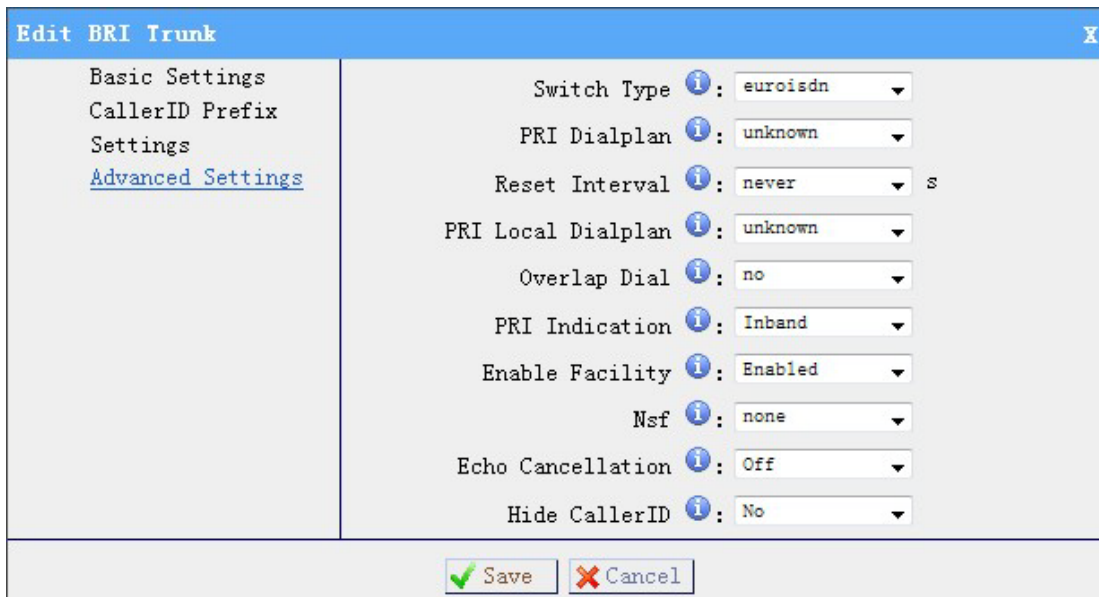


Figure 3-5

•Switch Type:

National: National ISDN type2 (common in US)

ni1: National ISDN type1

dms100: Nortel DMS100

4ess: AT&T 4ESS

5ess: Lucent 53SS

Euroisdn: Euro ISDN

Osig: Minimalistic protocol to build a 'network' with two or more pbx of different vendors.

•**PRI Dialplan**

Sets an option required for some (rare) switches that require a dialplan parameter to be passed. This option is ignored by most PRI switches. It may be necessary on a few pieces of hardware. This option can almost always be left unchanged from the default.

•**Reset Interval**

Set the time in seconds between restart of unused channels. Some PBXs don't like channel restarts. so set the interval to a very long interval e.g. 100000000 or 'never' to disable *entirely*. If you are in Israel, the following is important: As Bezeq in Israel doesn't like the B-Channel resets happening on the lines, it is best to set the resetinterval to 'never' when installing a box in Israel. Our past experience also shows that this parameter may also cause issues on local switches in the UK and China.

PRI Local Dialplan

Sets an option required for some (rare) switches that require a dialplan parameter to be passed. This option is ignored by most PRI switches. It may be necessary on a few pieces of hardware. This option can almost always be left unchanged from the default.

•**Overlap Dial**

Whether MyPBX can dial this switch using overlap digits. If you need Direct Dial-in (DDI; in German \"Durchwahl\") you should change this to yes, then MyPBX will wait after the last digit it receives.

•**PRI Indication**

Tells how MyPBX should indicate Busy() and Congestion() to the switch/user. Accepted values are:

inband: MyPBX plays indication tones without answering; not available on all PRI/BRI subscription lines

outofband: MyPBX disconnects with busy/congestion information code so the switch will play the indication tones to the caller. Busy() will now do same as setting PRI_CAUSE=17 and Hangup().

•**Enable Facility**

To enable transmission of facility-based ISDN supplementary services (such as caller name from CPE over facility), enable this option.

Nsf

Used with AT&T PRIs. If outbound calls are being rejected due to \"Mandatory information element missing\" and the missing IE is 0x20, then you need this setting.

Echo Cancellation

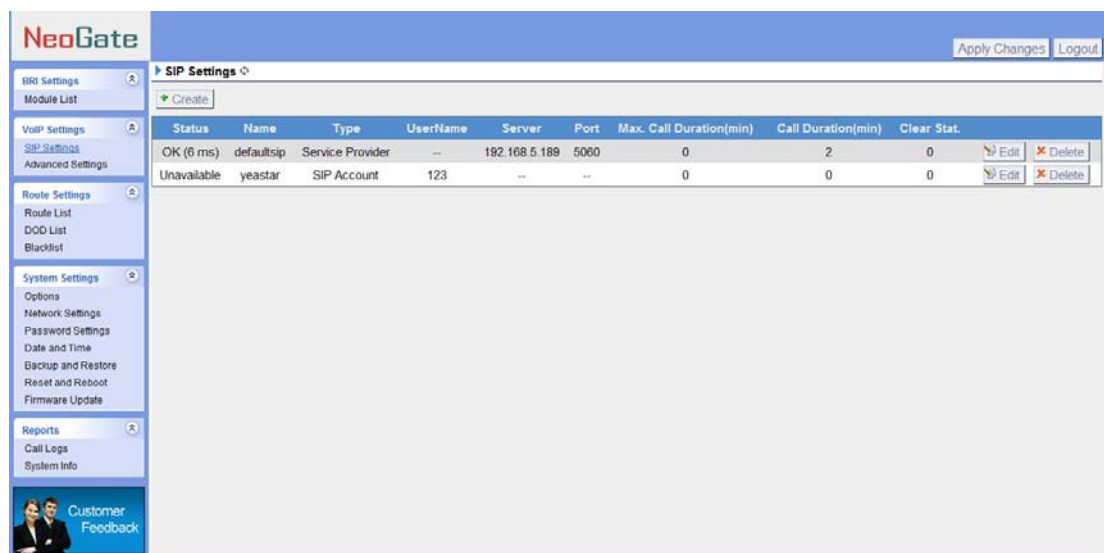
Disable or enable echo cancellation.

Hide CallerID

Whether to Hide Caller ID.

3.3 VOIP Settings

3.3.1 SIP Settings



Copyright © 2010-2011 Yeostar Technology, Co., Ltd. All Rights Reserved.

Figure 3-6

3.3.1.1 SIP Account

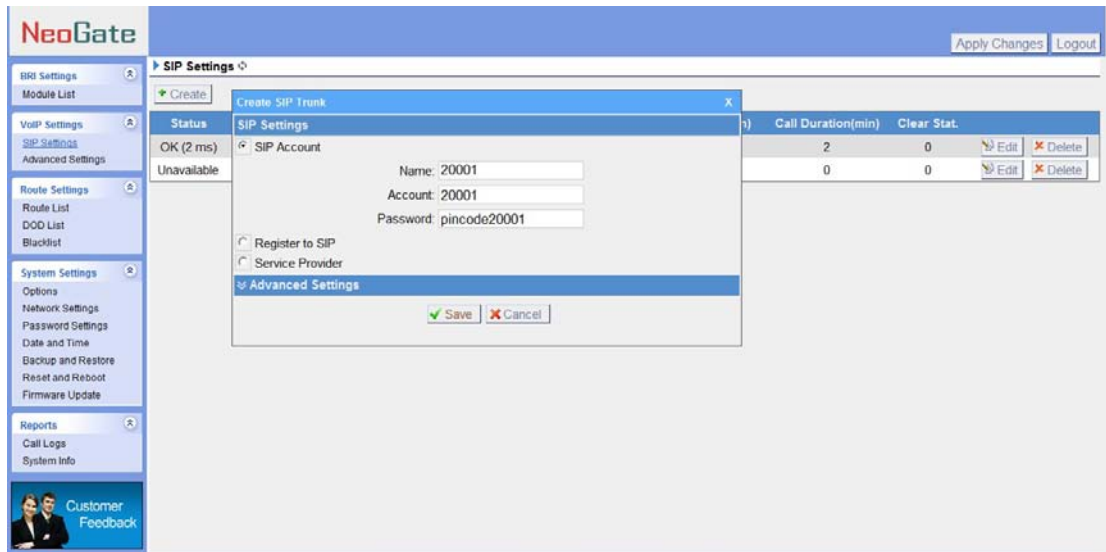
It is an SIP Account that allows an IP Phone, IP Soft- Phone client, IPPBX and soft switch to register on NeoGate.

•Extension

The numbered extension, i.e. 20001, that will be associated with this particular User / Phone.

•Password

The password for this extension, e.g.: 'pincode20001'.



Copyright © 2010-2011 Yeastar Technology, Co., Ltd. All Rights Reserved.

Figure 3-7

3.3.1.2 Register to SIP

'Register to SIP', It use to register to SIP Server or SIP Proxy.

•Hostname/IP

Service provider's hostname or IP address.5060 is the standard port number used by SIP protocol. Don't change this part if it is not required.

•Domain

Put the VoIP provider's server domain name here.

•Username

Put the username of SIP account. Used for SIP trunk registration.

•Authorization name

Used for SIP authentication. Leave this blank if not required.

•Password

Put the password of SIP account.

•From User

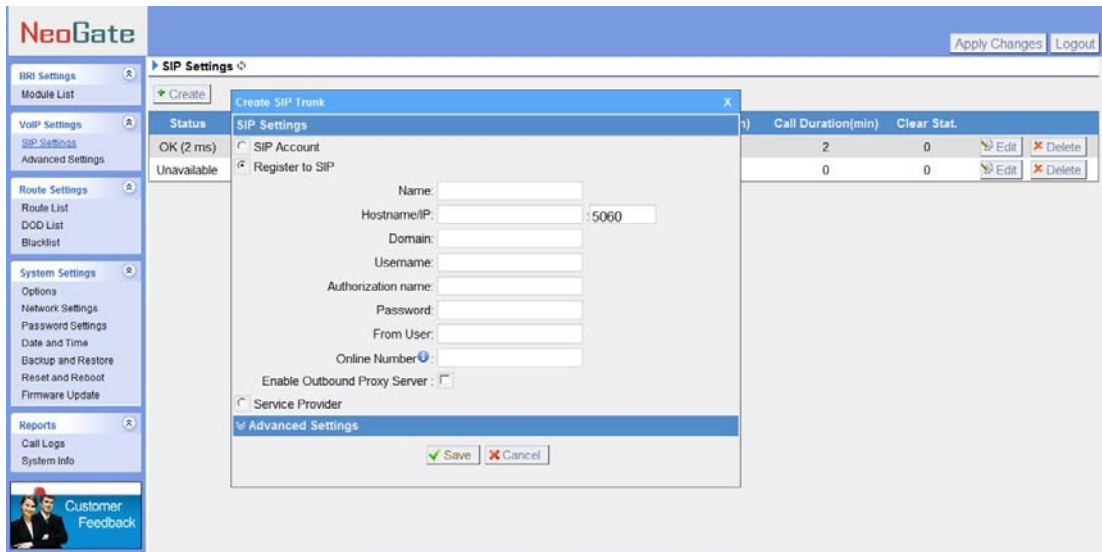
All outgoing calls from this SIP Trunk will use the From User (In this case the account name for SIP Registration) in From Header of the SIP Invite.

•Online number

Define the online number that expected by 'Skype Connect' and some other SIP service providers. Leave this field blank if it's no required.

•Outbound Proxy Server

A proxy that receives requests from a client, even though which may not be the server resolved by the Request-URI.



Copyright © 2010-2011 Yeostar Technology, Co., Ltd. All Rights Reserved.

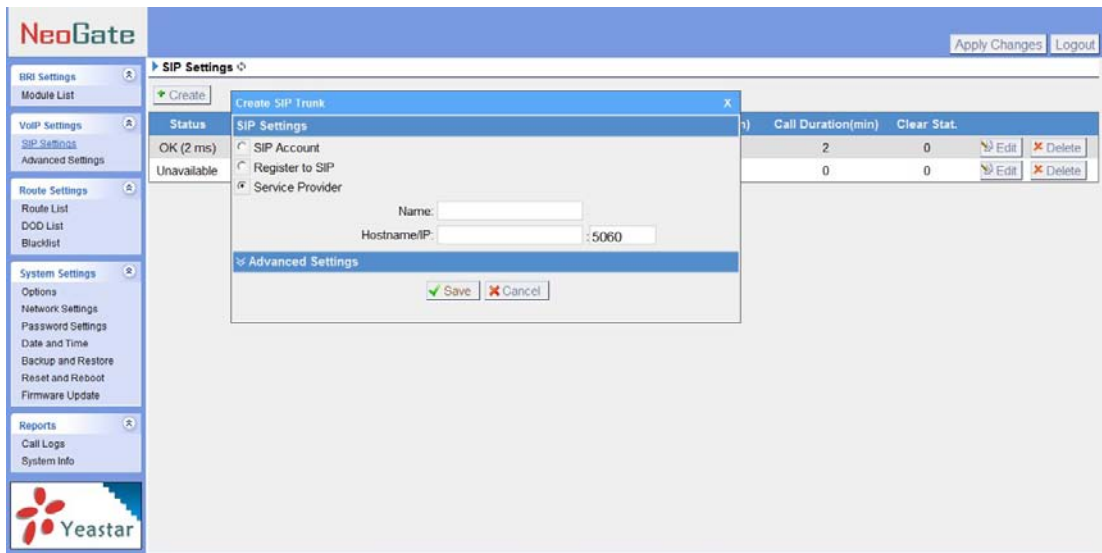
Figure 3-8

3.3.1.3 Service Provider

·Hostname/IP

Service provider's hostname or IP address.

Note: 5060 is the standard port number used by SIP protocol. Don't change this part if it is not required.



Copyright © 2010-2011 Yeostar Technology, Co., Ltd. All Rights Reserved.

Figure 3-9

3.3.1.4 Advanced Setting

·Max. Call Duration (min)

Set the maximum call duration here. 0 means no limit.

Clear Stat

The date of each month the system will clear the call history.

DTMF Mode

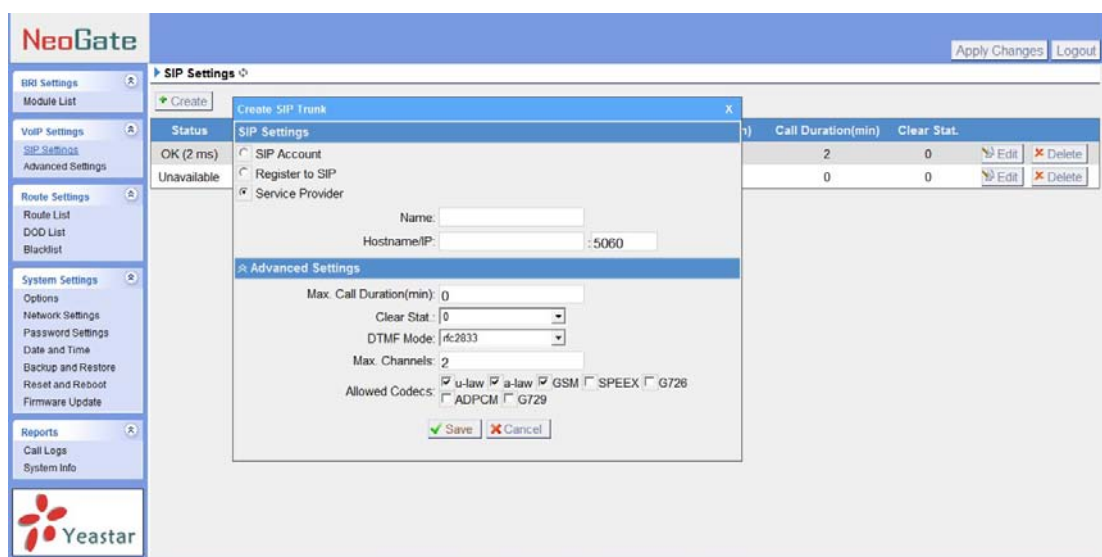
You can set the DTMF mode here (rfc2833,info,inband,auto, default is rfc2833).

Max. Channels

Set the maximum channels here. 0 means no limit.

Allowed Codecs

Choose the codes allowed here. (Default u-law, a-law, GSM)



Copyright © 2010-2011 Yeastar Technology, Co., Ltd. All Rights Reserved.

Figure 3-10

3.3.2 Advanced Settings

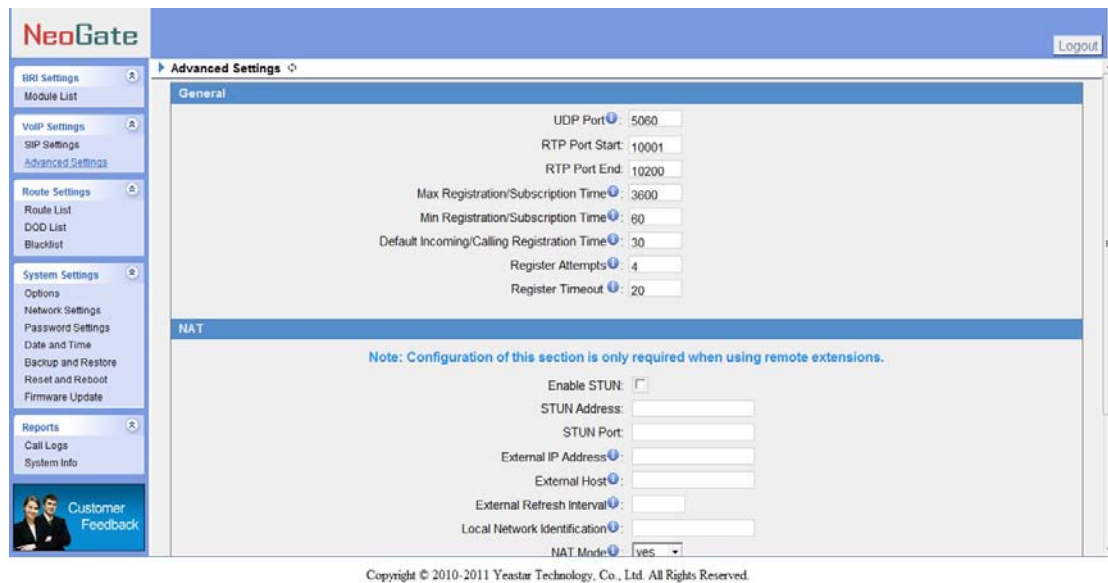


Figure 3-11

1) General

•UDP Port

Port use for sip registrations, Default is 5060.

•RTP Port Start

Beginning of RTP port range

•RTP Port End

End of RTP port range

•Max Registration/Subscription Time

Put down the maximum duration (in seconds) of a SIP registration. Default is 3600 seconds.

•Min Registration/Subscription Time

Put down the minimum duration (in seconds) of a SIP registration. Default is 60 seconds.

•Default Incoming/Outgoing Registration Time

Default Incoming/Outgoing Registration Time: Default is 30 seconds.

•Register Attempts

The number of SIP REGISTER messages to send to a SIP Registrar before giving up. Default is 4 (no limit).

•Register Timeout

Put down the number of seconds to wait for a response from a SIP Registrar

before timed out. Default is 20 seconds.

2) NAT

Note: Configuration of this section is only required when using remote extensions.

•Enable STUN

STUN (Simple Traversal of UDP through NATs) is a protocol for assisting devices behind a NAT firewall or router with their packet routing.

•STUN Address

The STUN server allows clients to find out their public address, the type of NAT they are behind and the internet side port associated by the NAT with a particular local port. This information is used to set up UDP communication between the client and the VOIP provider and so establish a call.

•External IP Address

Put down the IP address that will be associated with outbound SIP messages if the system is in a NAT environment.

•External Host

Alternatively you can specify an external host, and the system will perform DNS queries periodically.

This setting is only required when your public IP address is not static. It is recommended that a static public IP address be used with this system. Please contact your ISP for more information.

•External Refresh Interval

If an external host has been supplied, you may specify how often the system will perform a DNS query on this host. This value is specified in seconds.

•Local Network Identification

It's used to identify the local network using a network number/subnet mask pair when the system is behind a NAT or firewall.

Some examples of this are as follows:

'192.168.0.0/255.255.0.0' : All RFC 1918 addresses are local networks;

'10.0.0.0/255.0.0.0' : Also RFC1918;

'172.16.0.0/12': Another RFC1918 with CIDR notation;

'169.254.0.0/255.255.0.0' : Zero conf local network.

Please refer to RFC1918 for more information.

•NAT Mode

Global NAT configuration for the system. The options for this setting are as follows:

Yes = Use NAT. Ignore address information in the SIP/SDP headers and reply to the sender's IP address/port.

No = Use NAT mode only according to RFC3581.

Never = Never attempt NAT mode or RFC3581 support.

Route = Use NAT but do not include report in headers.

·Allow RTP Reinvite

By default, the system will route media streams from SIP endpoints through itself. Enabling this option causes the system to attempt to negotiate the endpoints to route packets to each other directly, bypassing the system. It is not always possible for the system to negotiate endpoint-to-endpoint media routing.

3) QOS

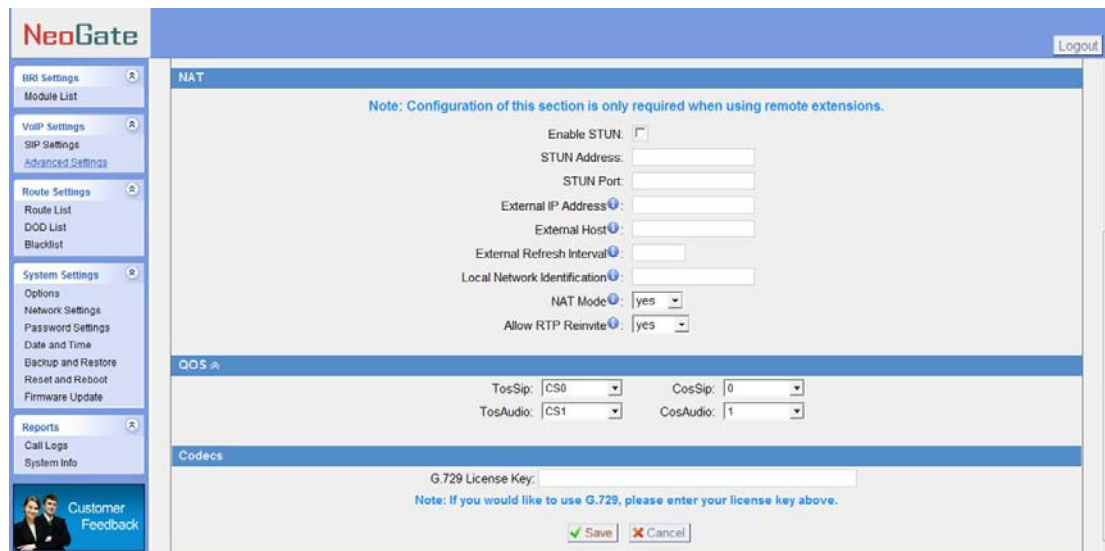
QOS (Quality of Service) is a major issue in VOIP implementations. The issue is how to guarantee that packet traffic for a voice or other media connection will not be delayed or dropped due interference from other lower priority traffic.

When the network capacity is insufficient, QoS could provide priority to users by setting the value.

4) Codecs

·G.729 License Key

Note: If you would like to use G.729, please enter your license.



Copyright © 2010-2011 Yeastar Technology, Co., Ltd. All Rights Reserved.

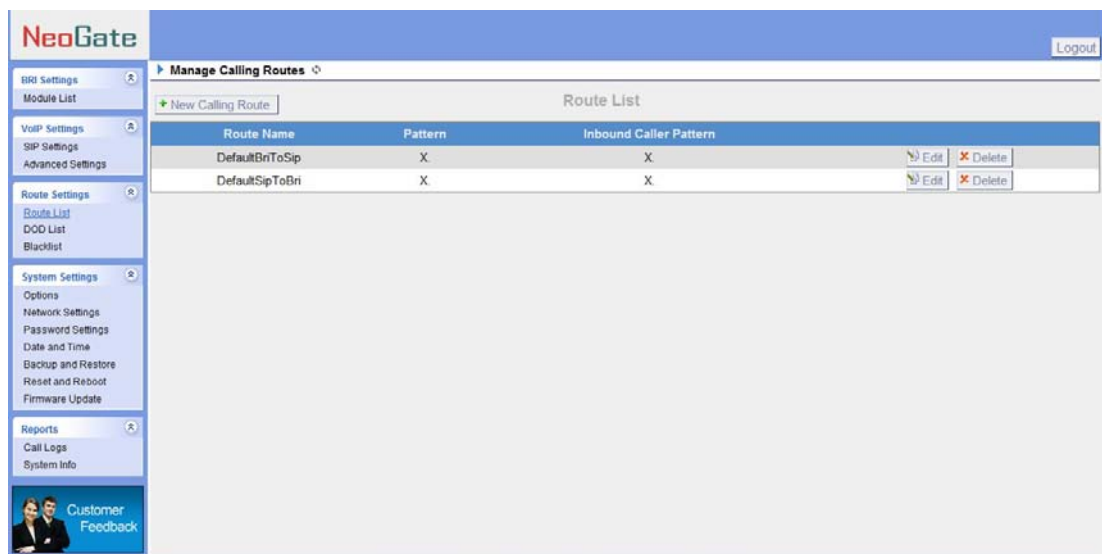
Figure 3-12

3.4 Route List

3.4.1 Manage Calling Routes

Calling routing mainly works for guides outgoing/incoming calls to go through trunks.

Click 'New Calling Route' and fill in the corresponding information in the popup window.



Copyright © 2010-2011 Yeostar Technology, Co., Ltd. All Rights Reserved.

Figure 3-13

1) General

•Route Name

Put the name of this Calling Route. ex: 'Local' or 'Long Distance' etc.

•Pattern

Outbound calls that match this dial pattern will use this outbound route. There are a number of dial pattern characters that have special meanings:

X : Any Digit from 0-9

Z : Any Digit from 1-9

N : Any Digit from 2-9

[12345-9] : Any digit in the brackets (in this example, 1,2,3,4,5,6,7,8,9)

The '.' Character will match any remaining digits. E.g." 9011." will match any phone number that starts with 9011, excluding 9011 itself.

The '!' will match any remaining digits, and causes the matching process to complete as soon as it can be determined that no other matches are possible.

Example 1: **NXXXXXX** will match any 7 digits phone number.

Example 2: **1NXXNXXXXX** will match a phone number starting with a 1, followed by a 3-digit area code, and then 6 digit number.

• **Strip digits from front**

Allows the user to specify the number of digits that will be stripped from the front of the phone number before the call is placed. For example, if users must press 0 before dialing a phone number, one digit should be stripped from the dial string before the call is placed.

• **Prepend these digits before dialing**

These digits will be prepended to the phone number before the call is placed. For example, if a trunk requires 10 digit dialing, but users are more comfortable with 7 digit dialing, this field could be used to prepend a 3 digit area code to all 7 digit phone numbers before calls are placed. When using analog trunks, a 'w' character may also be prepended to provide a slight delay before dialing.

• **Direct Number**

All the outgoing calls through this route will call to this phone number directly.

• **Strategy**

Define the strategy to select trunk.

Default: Select the trunk from the first.

Sequence: Select the trunk next the last used.

Balance: Select the trunk last recently used.

• **Time**

The scope of time which is allowed to make calls via this route.

• **Days of week**

The days in a week when is allowed to make calls via this route.

• **Inbound Caller Pattern**

Inbound calls that match this dial pattern will use this route. The rule is the same as Dial Pattern.

• **Inbound Trunk**

Choose the inbound trunks.

• **Outbound Trunk**

Choose the outbound trunks.

Edit Calling Route
X

Route Name [?]:

Pattern [?]:

Strip [?]: Digits From Front

Prepend These Digits [?]: Before Dialing

Direct Number [?]:

Strategy [?]:

Time: : - :

Days of Week: -

Inbound Caller Pattern:

Inbound Trunks

Available Trunks		Selected
<input type="text" value="All"/> <ul style="list-style-type: none"> BRI2(BRI) BRI3(BRI) BRI4(BRI) defaultsip(SIP) yeastar(SIP) 	<input type="button" value="»»"/> <input type="button" value="→"/> <input type="button" value="←"/> <input type="button" value="««"/>	<input type="text" value="BRI1(BRI)"/>

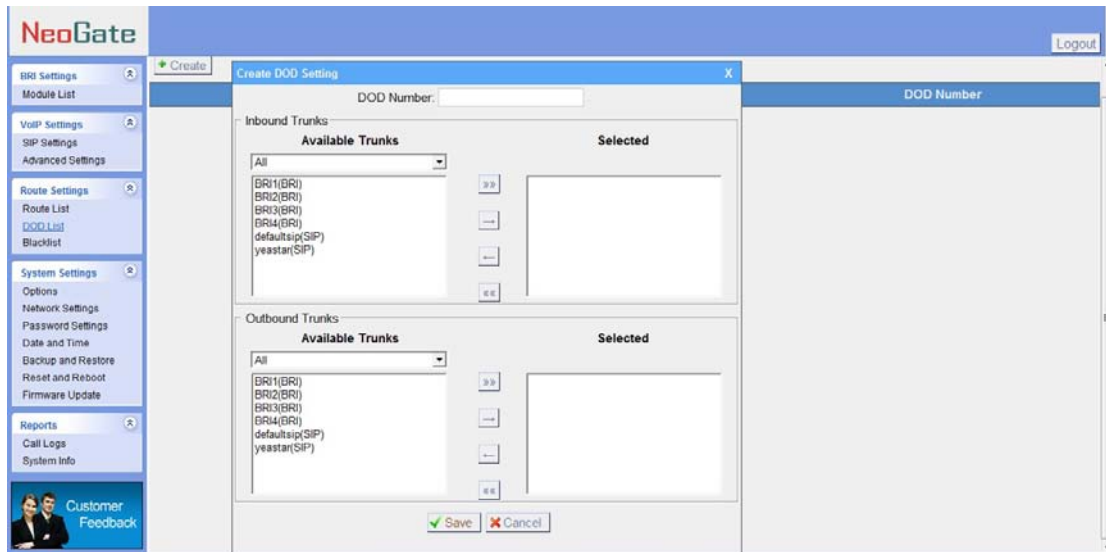
Outbound Trunks

Available Trunks		Selected
<input type="text" value="All"/> <ul style="list-style-type: none"> BRI1(BRI) BRI2(BRI) BRI3(BRI) BRI4(BRI) yeastar(SIP) 	<input type="button" value="»»"/> <input type="button" value="→"/> <input type="button" value="←"/> <input type="button" value="««"/>	<input type="text" value="defaultsip(SIP)"/>

Figure 3-14

3.4.2 DOD List

DOD(Direct Outward Dialing). Set the Caller number to the outbound trunk.



Copyright © 2010-2011 Yeastar Technology, Co., Ltd. All Rights Reserved.

Figure 3-15

3.4.3 Blacklist

Number Blacklist is used to block an incoming call you do not want to answer and block outgoing call.

If the incoming call or outgoing call number is registered in the number blacklist, the caller will hear the following: "The number you have dialed is not in service. Please check the number and try again". The system will then disconnect the call.

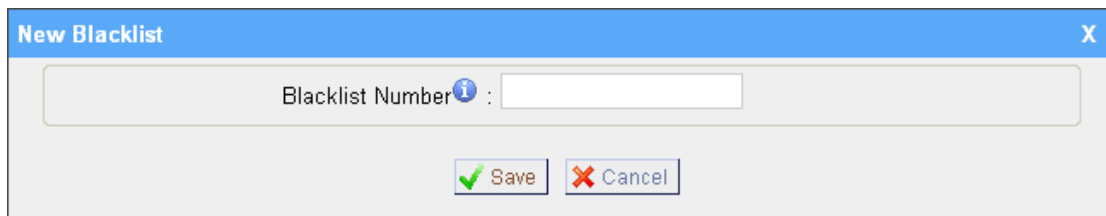


Figure 3-16

3.5 System Settings

3.5.1 Options

1) General

• **Ring Timeout**

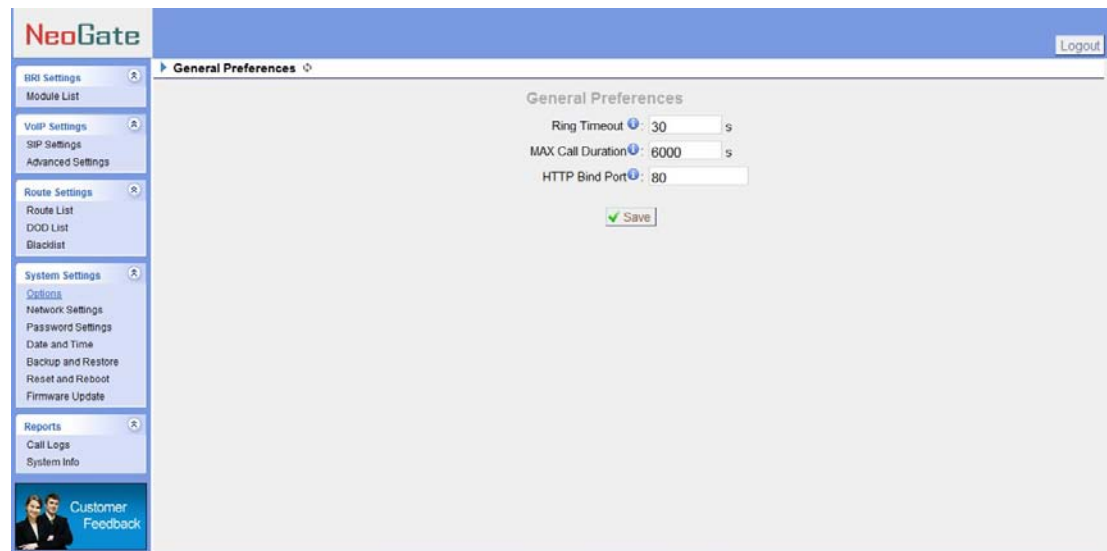
Number of seconds to ring a device before answering. Default value is 30s.

• **MAX Call Duration**

The absolute maximum amount of time permitted for a call. A setting of 0 disables the timeout. Default value is 6000s.

•HTTP Bind Port/Web Access Port

Port use for HTTP sessions. Default: 80



Copyright © 2010-2011 Yeostar Technology, Co., Ltd. All Rights Reserved.

Figure 3-17

3.5.2 Network Setting

1) LAN

•DHCP

If this option is set, NeoGate will use DHCP to get an available IP address from your local network. Not recommended.

•Enable SSH

This is the advance way to access the device, you can use the putty software to access the device. In the SSH access, you can do more advance setting and debug.

•**Port:** the default is 8022,

•Hostname

Set the host name for NeoGate.

•IP Address

Set the IP Address for NeoGate.

•Subnet Mask

Set the subnet mask for NeoGate.

•Gateway

Set the gateway for NeoGate.

•Primary DNS

Set the primary DNS for NeoGate.

•Secondary DNS

Set the secondary DNS for NeoGate.

2) Advanced Settings

A VLAN is a logical local area network (or LAN) that extends beyond a single traditional LAN to a group of LAN segments, given specific configurations.

•IP Address2 and Subnet Mask2

.Configure second IP Address and Mask in this text, NeoGate can use this ip address access to another network.

•VLAN Number

.The VLAN Number is a unique value you assign to each VLAN on a single device.

•VLAN IP Address

Set the IP Address for NeoGate VLAN.

•VLAN Subnet Mask

Set the Subnet Mask for NeoGate VLAN.

•VLAN Gateway

Set the Gateway for NeoGate VLAN.

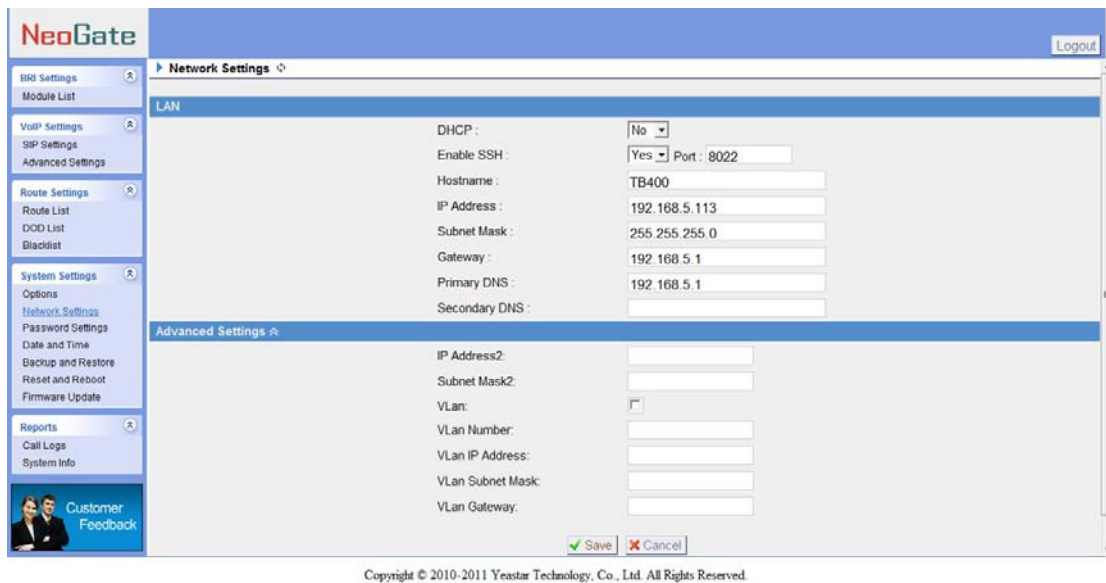


Figure 3-18

3.5.3 Password Settings

The default password is '**password**'. To change the password, enter the new password and click update. The system will then prompt you re-login using your new password.

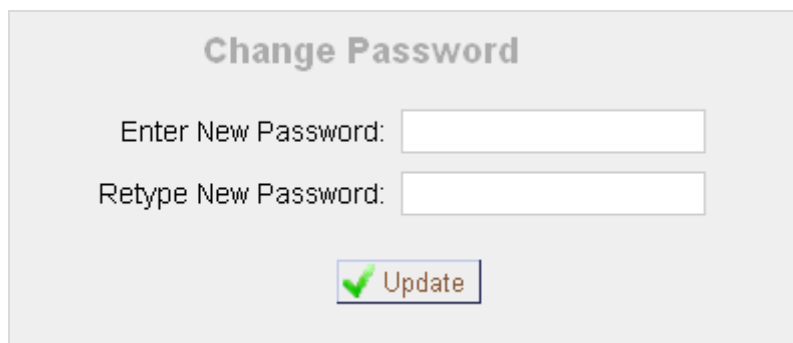


Figure 3-19

3.5.4 Date and Time

Set the date and time for NeoGate.

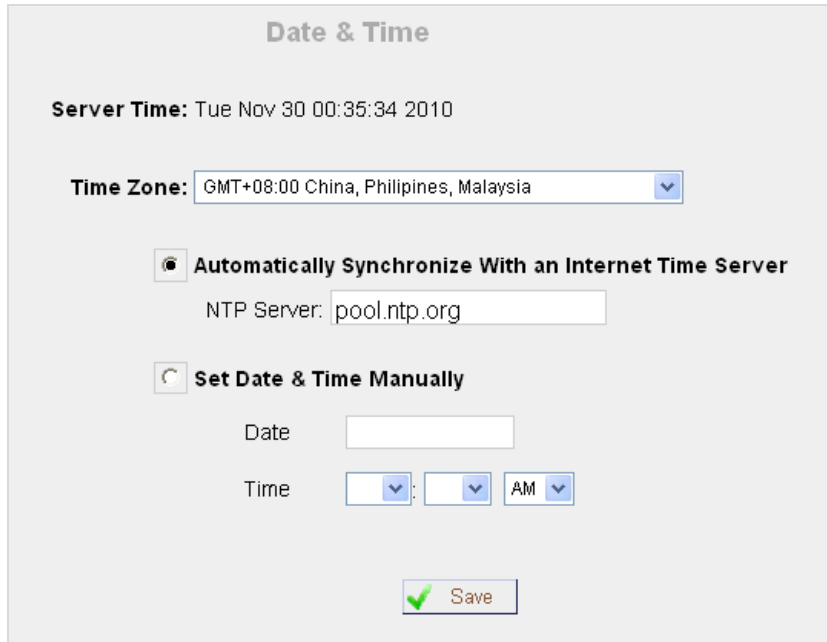


Figure 3-20

3.5.5 Backup and Restore

You can backup your configure in this page. After back up, you can see the back up in the list. You can restore the configure in this page also.

Note: the restore will only work after reboot.

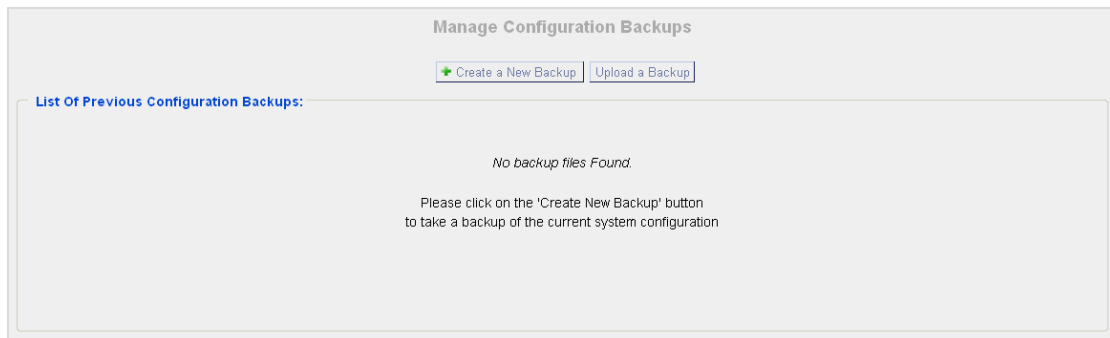


Figure 3-21

3.5.6 Reset and Reboot

·Reboot System

Warning: Rebooting the system will terminate all active calls!

·Reset to Factory Defaults

Warning: A factory reset will erase all configuration data on the system. Please do not turn off the system until the RUN light begins blinking. Any power interruption during this time could cause damage to the system.

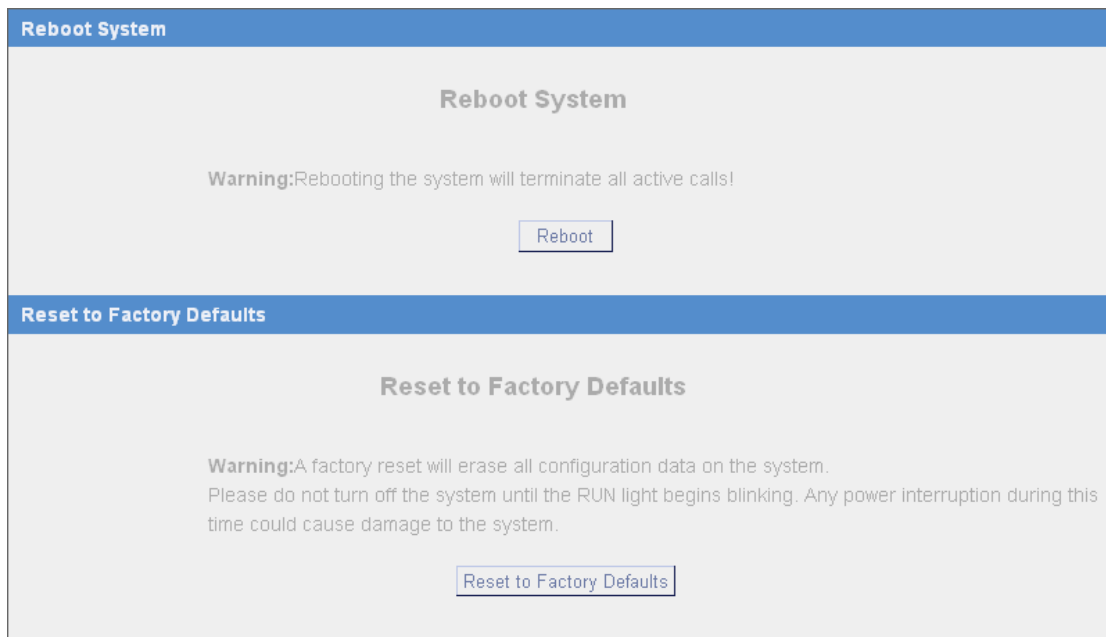


Figure 3-22

3.5.7 Firmware Update

Upgrading of the firmware is possible through the Administrator web interface using a TFTP Server or an HTTP URL.

Enter your TFTP Server IP address and firmware file location, then click start to update the firmware.

More Information, please see

<http://www.yeastar.com/download/NeoGate-TB400/>

Note:

1. If enabled 'Reset configs', System will restore to factory default settings.
2. When update the firmware, please don't turn off the power.

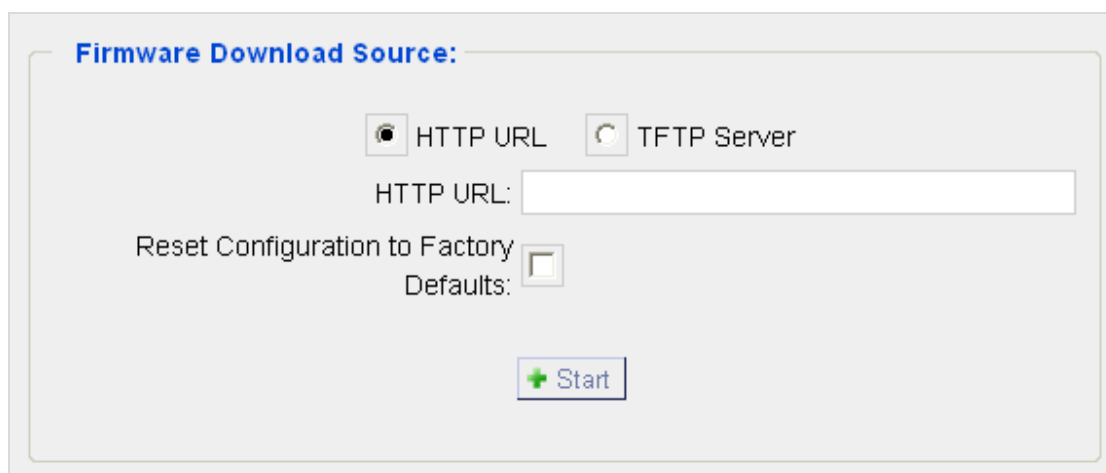
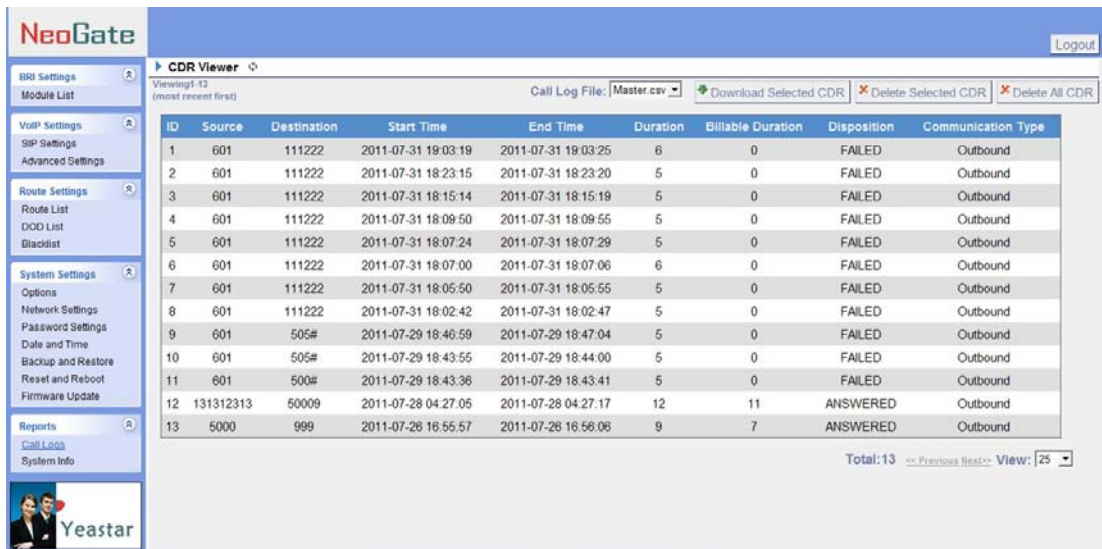


Figure 3-23

3.6 Reports

3.6.1 Call Logs

The call Log captures all call details, including Source, Destination, Start Time, End Time, Duration, Billable Duration, Disposition, Communication Type, etc. Administrator can export CDR data to a CSV file.



ID	Source	Destination	Start Time	End Time	Duration	Billable Duration	Disposition	Communication Type
1	601	111222	2011-07-31 19:03:19	2011-07-31 19:03:25	6	0	FAILED	Outbound
2	601	111222	2011-07-31 18:23:15	2011-07-31 18:23:20	5	0	FAILED	Outbound
3	601	111222	2011-07-31 18:15:14	2011-07-31 18:15:19	5	0	FAILED	Outbound
4	601	111222	2011-07-31 18:09:50	2011-07-31 18:09:55	5	0	FAILED	Outbound
5	601	111222	2011-07-31 18:07:24	2011-07-31 18:07:29	5	0	FAILED	Outbound
6	601	111222	2011-07-31 18:07:00	2011-07-31 18:07:06	6	0	FAILED	Outbound
7	601	111222	2011-07-31 18:05:50	2011-07-31 18:05:55	5	0	FAILED	Outbound
8	601	111222	2011-07-31 18:02:42	2011-07-31 18:02:47	5	0	FAILED	Outbound
9	601	505#	2011-07-29 18:46:59	2011-07-29 18:47:04	5	0	FAILED	Outbound
10	601	505#	2011-07-29 18:43:55	2011-07-29 18:44:00	5	0	FAILED	Outbound
11	601	500#	2011-07-29 18:43:38	2011-07-29 18:43:41	5	0	FAILED	Outbound
12	131312313	50009	2011-07-28 04:27:05	2011-07-28 04:27:17	12	11	ANSWERED	Outbound
13	5000	999	2011-07-28 16:55:57	2011-07-28 16:56:06	9	7	ANSWERED	Outbound

Copyright © 2010-2011 Yeastar Technology, Co., Ltd. All Rights Reserved.

Figure 3-24

3.6.2 System Info

General:

Information about hardware version, firmware version and system uptime.

LAN:

Information about hostname, MAC address, IP address, subnet mask, gateway, Primary DNS and Secondary DNS.

Disk Usage:

Disk usage information.

Memory Usage:

Memory usage information.



The screenshot displays the NeoGate web interface. The left sidebar contains navigation menus for 'BRI Settings', 'VoIP Settings', 'Route Settings', 'System Settings', and 'Reports'. The main content area is titled 'System Information' and is divided into two sections: 'General' and 'LAN'. The 'General' section lists hardware and firmware versions, uptime, and system information. The 'LAN' section lists network configuration details such as hostname, MAC address, IP address, gateway, and DNS settings.

Section	Item	Value
General	Hardware Version:	NeoGate TB400
	Firmware Version:	6.10.0.05
	Uptime:	18:08:18 up 17 days, 1:14, load average: 1.07, 1.02, 1.00
	LAN	
LAN	Hostname:	TB400
	MAC Address:	14:b5:49:01:00:0a
	IP Address:	192.168.5.113
	Gateway:	192.168.5.1
	Primary DNS:	192.168.5.1
	Secondary DNS:	

Copyright © 2010-2011 Yeastar Technology, Co., Ltd. All Rights Reserved.

Figure 3-25

4. Application

Application 1

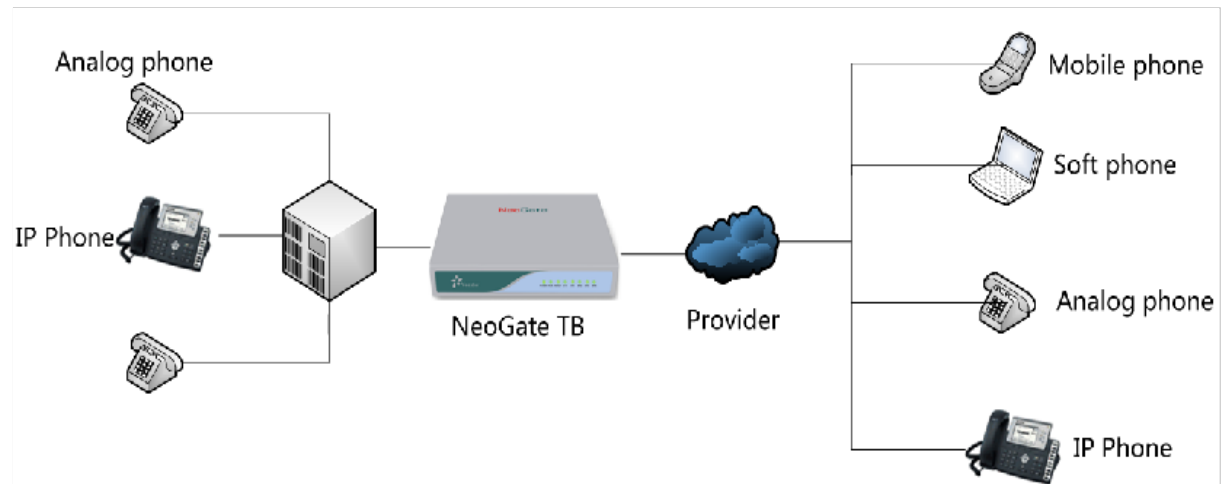


Figure 4-1

Application 2

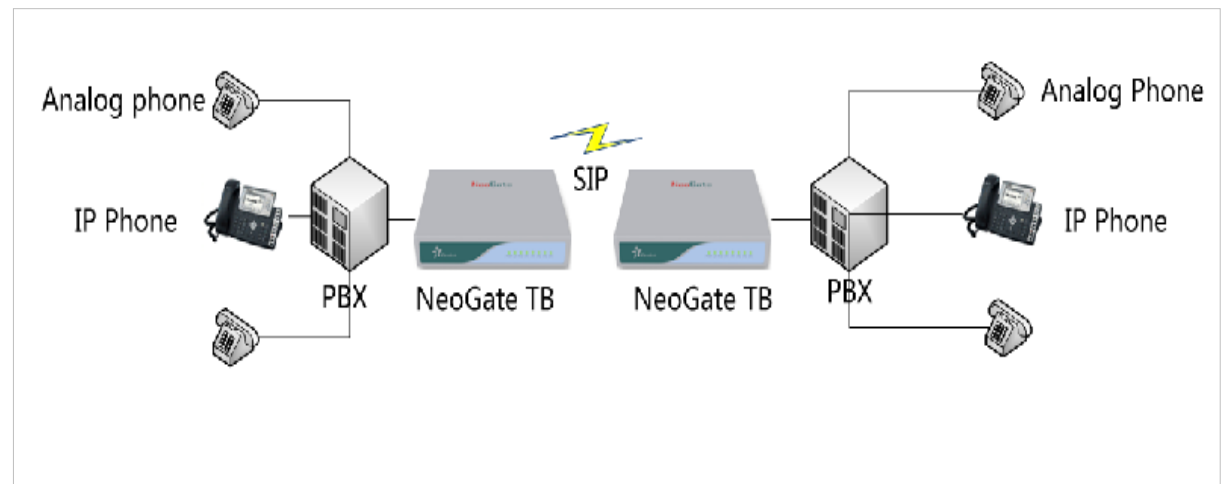


Figure 4-2

<Finish>