

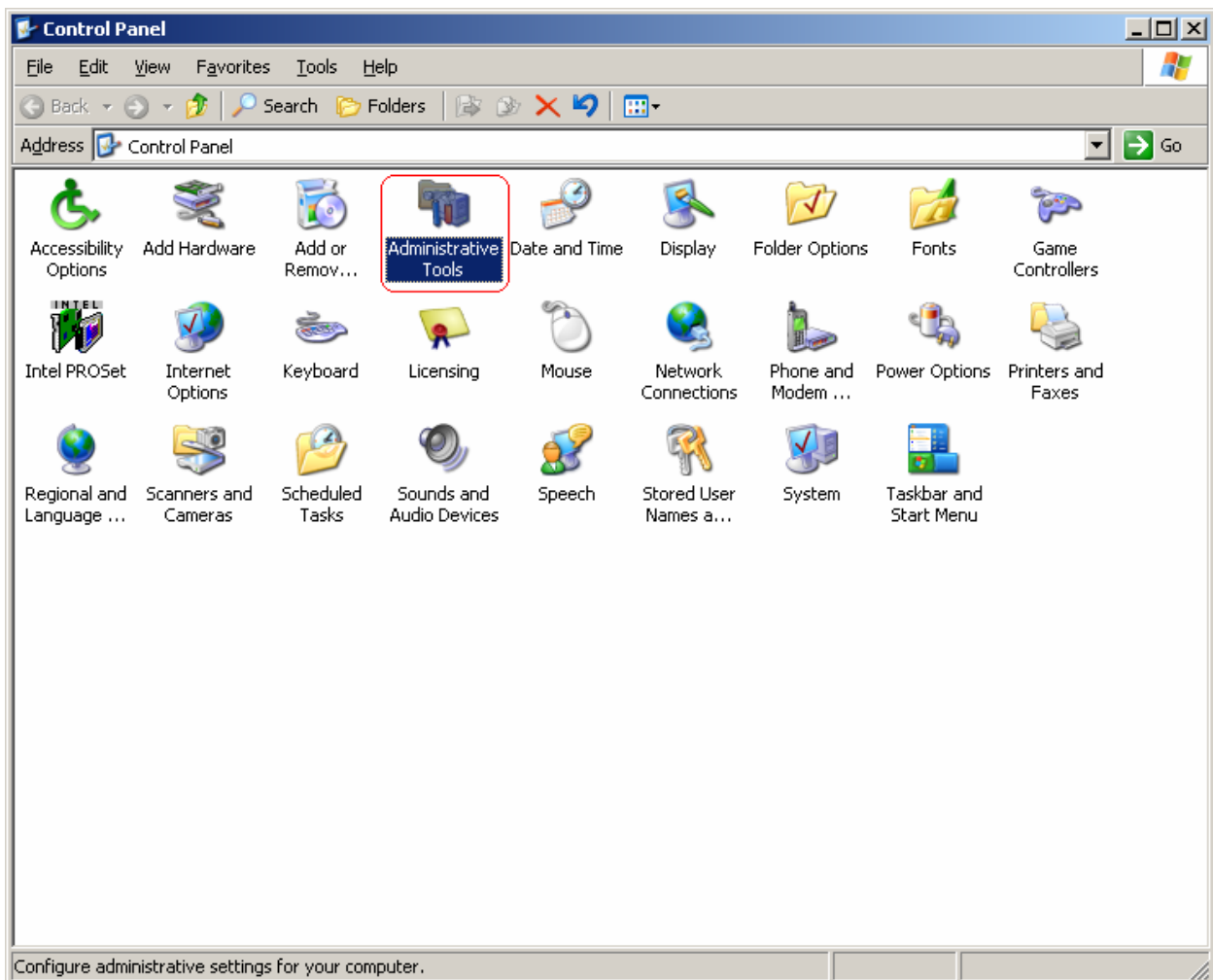
BizSky – Advanced Business Call Manage System

KEYWORD: Mobile Office, Remote Office, Call manager, Voice Message, Call Record, Click to Call, Business Call, Call History, BizSkype, SKY800, Skype, PBX, Skype Exchange, Skype Gateway, Trunks, Business, Web Call, Skype Me, SkypeOut, Skypeln

How to config Internet Information Services (IIS)

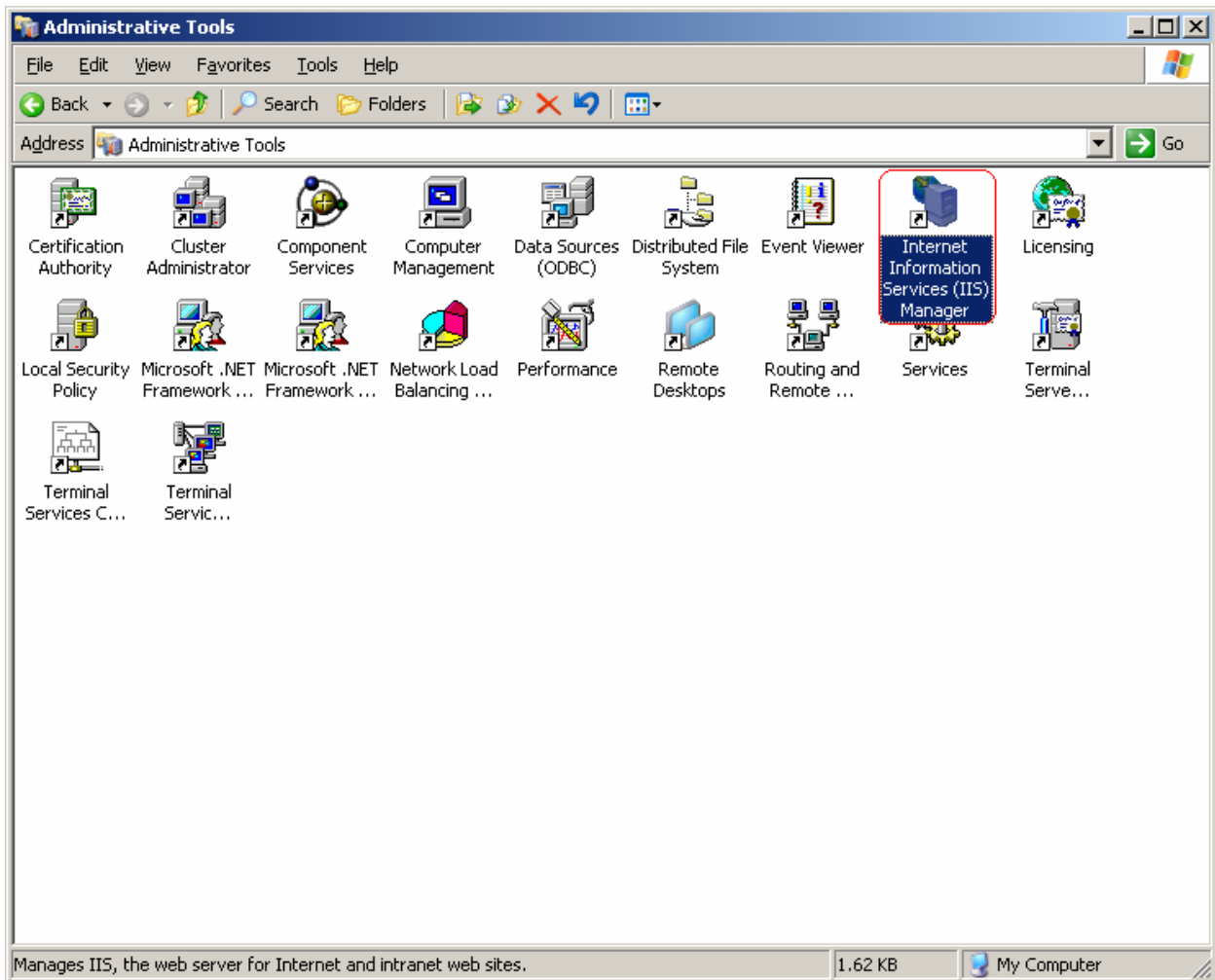
Step 1:

Open "Control Panel". Click "Administrative Tools".



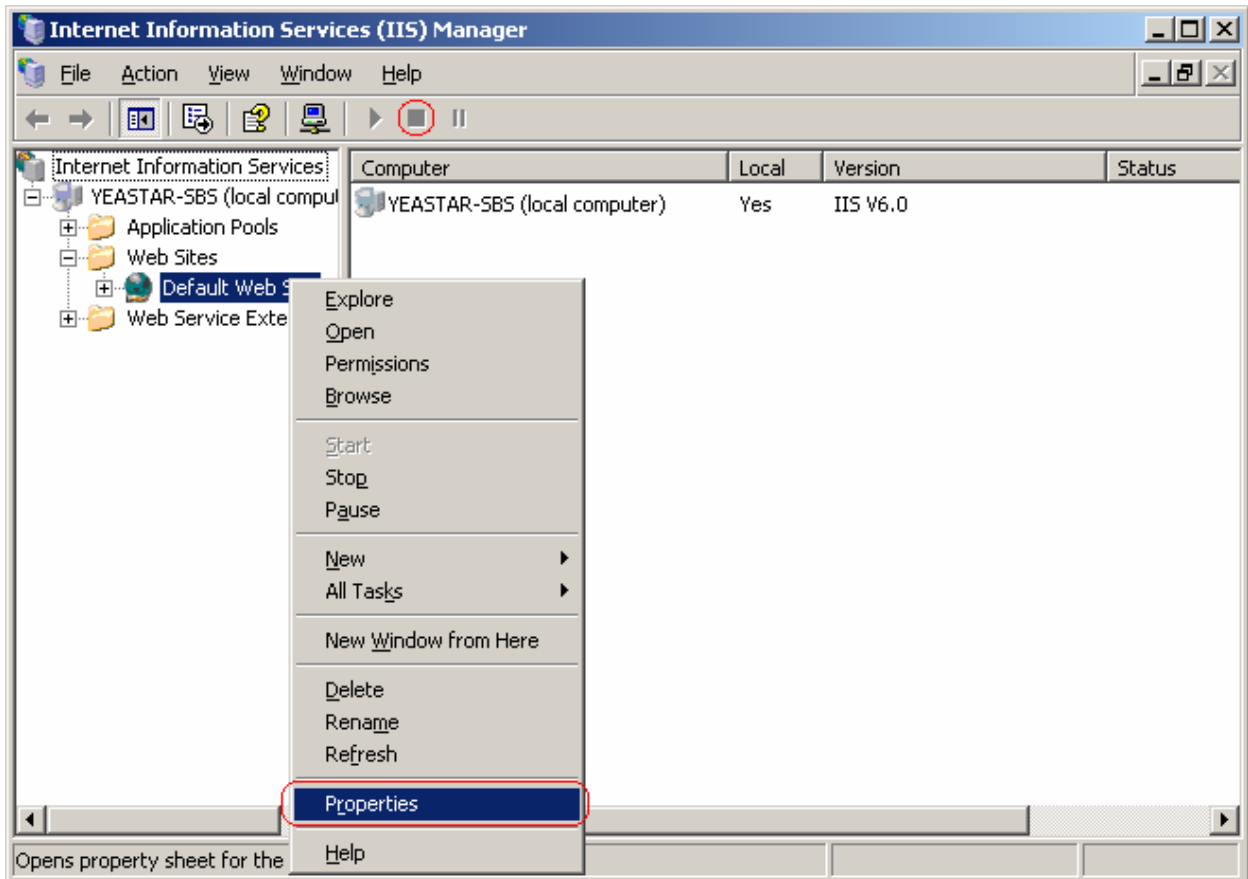
Step 2:

Click "Internet Information Services".



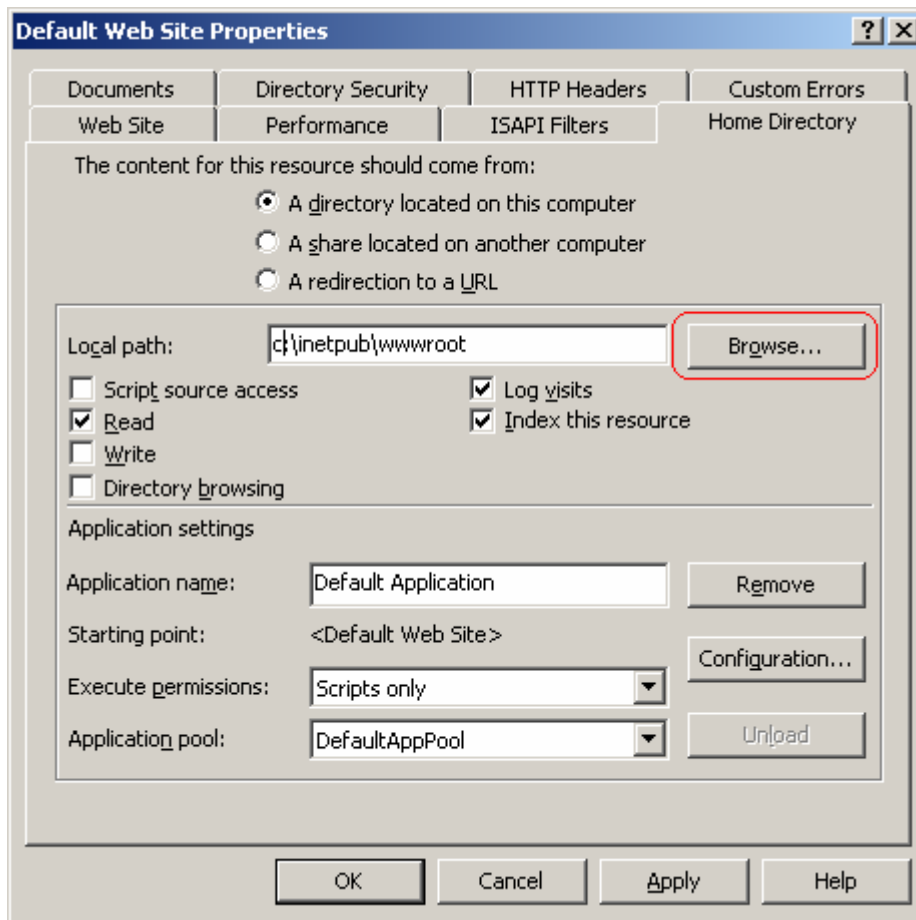
Step 3:

Click Default Web Site's "Properties"



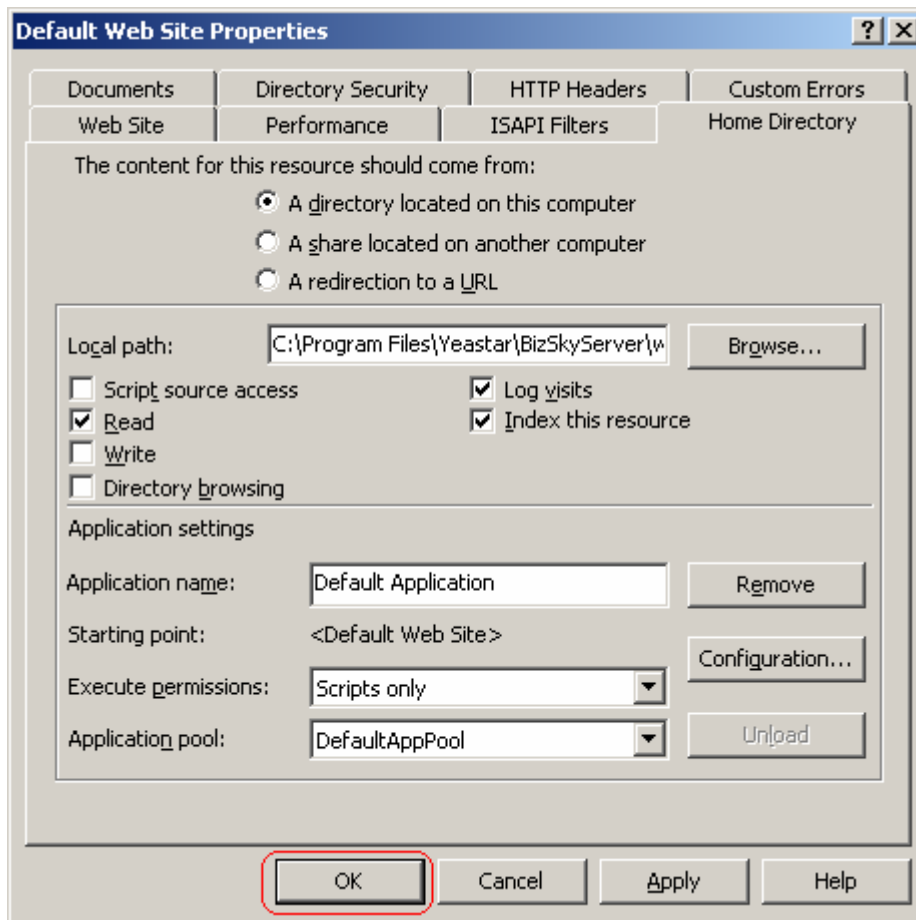
Step 4:

Open "Home Directory" page, Click "Browse" button to select BizSky's web path.



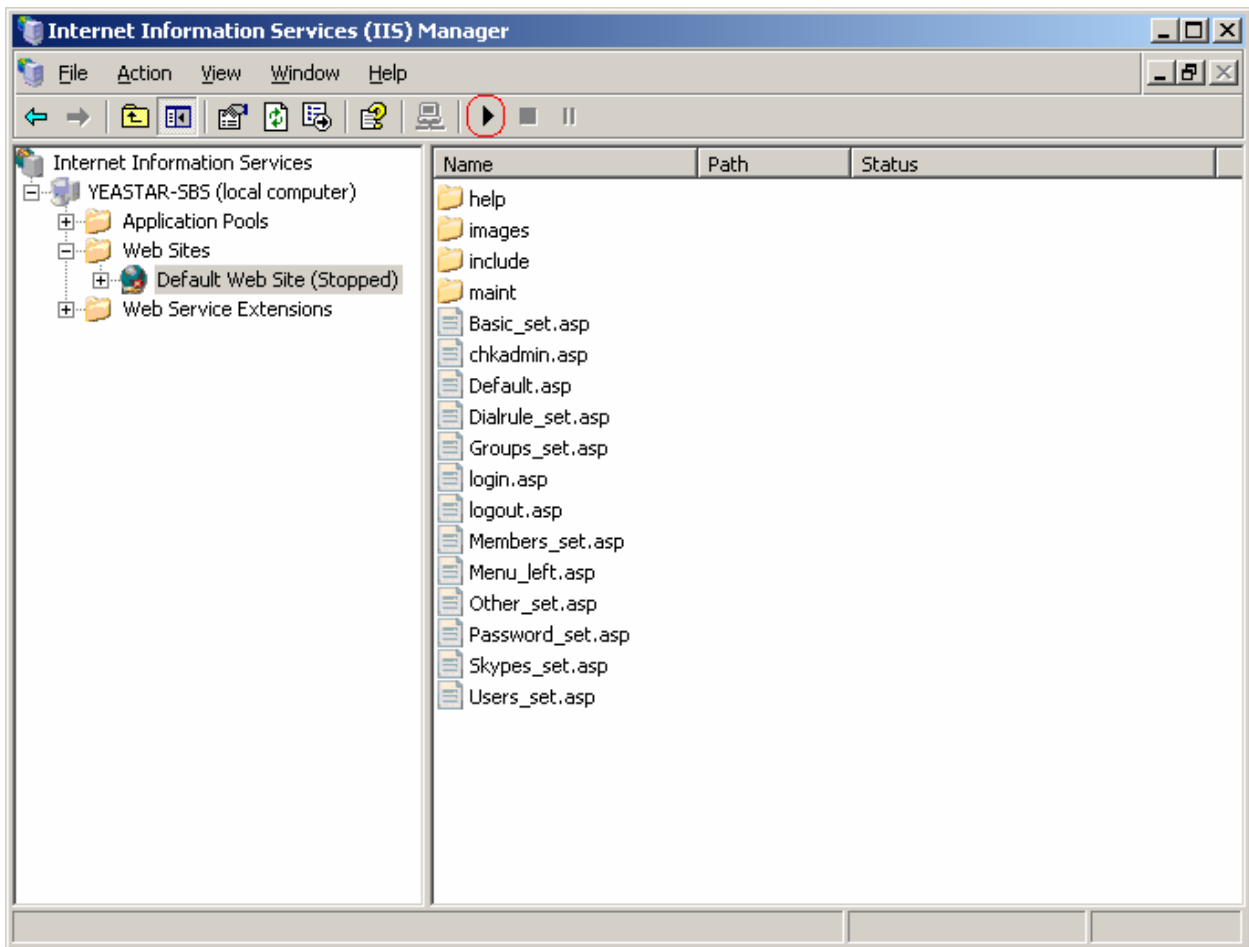
Step 5:

The default BizSky's web path is "C:\Program Files\Yeastar\BizSkyServer\www".
Click "OK".



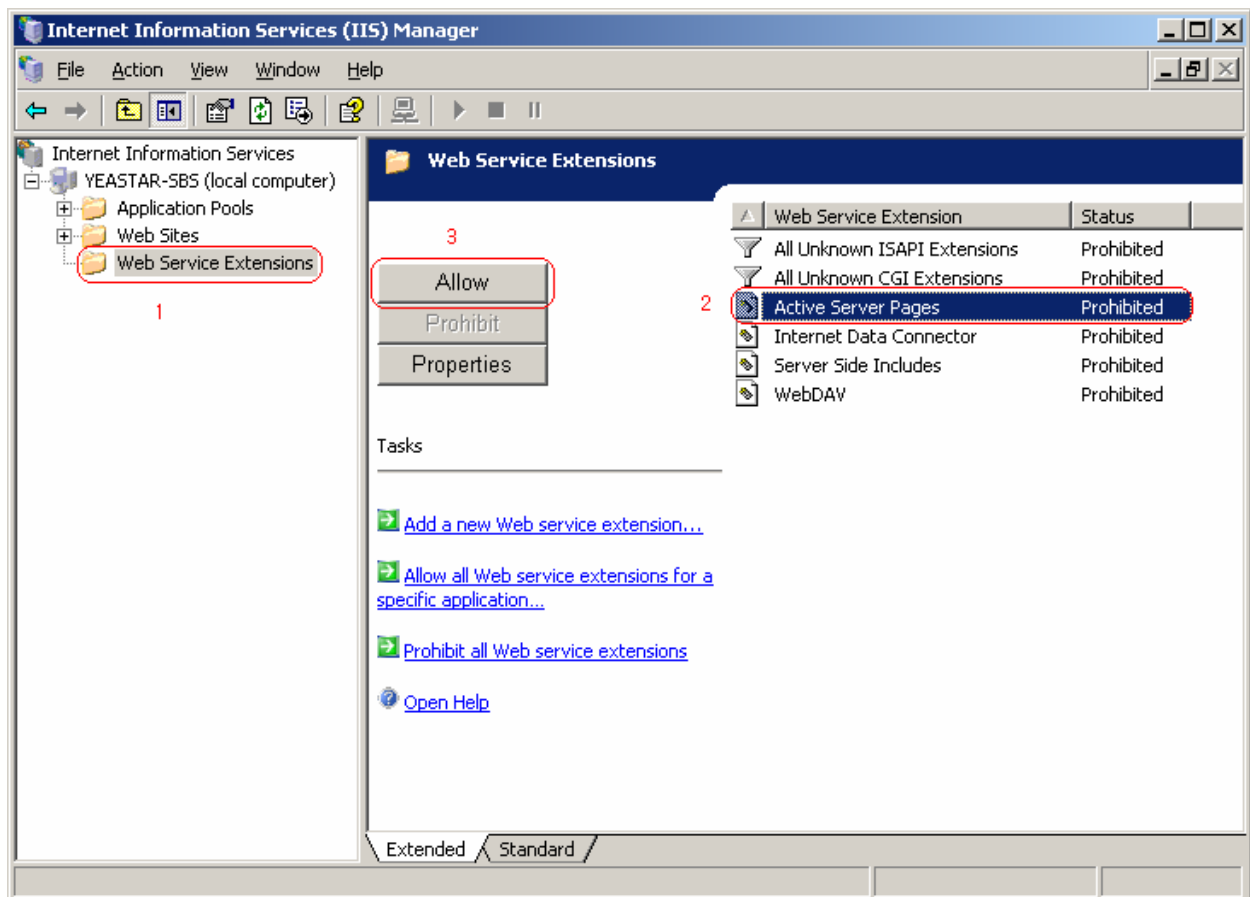
Step 6:

Click "Play" to start IIS Service.



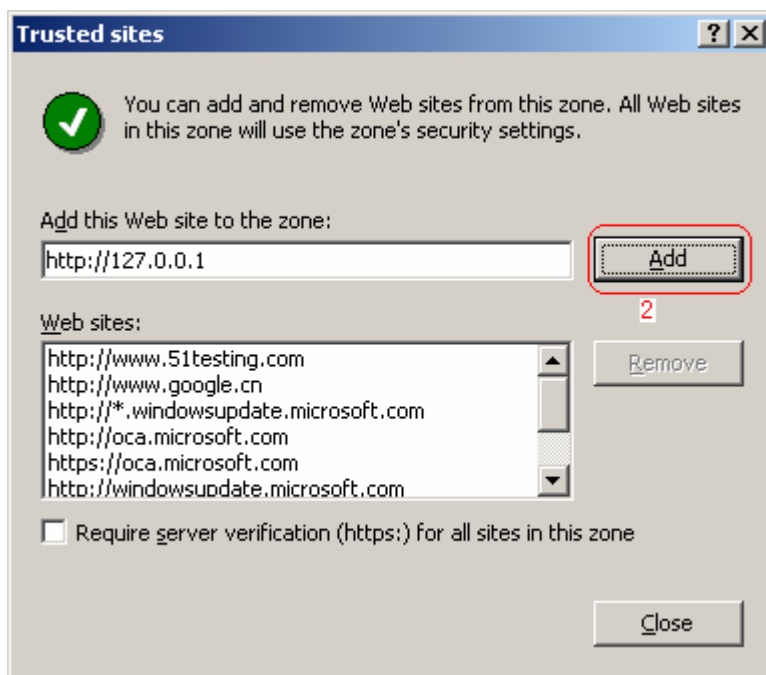
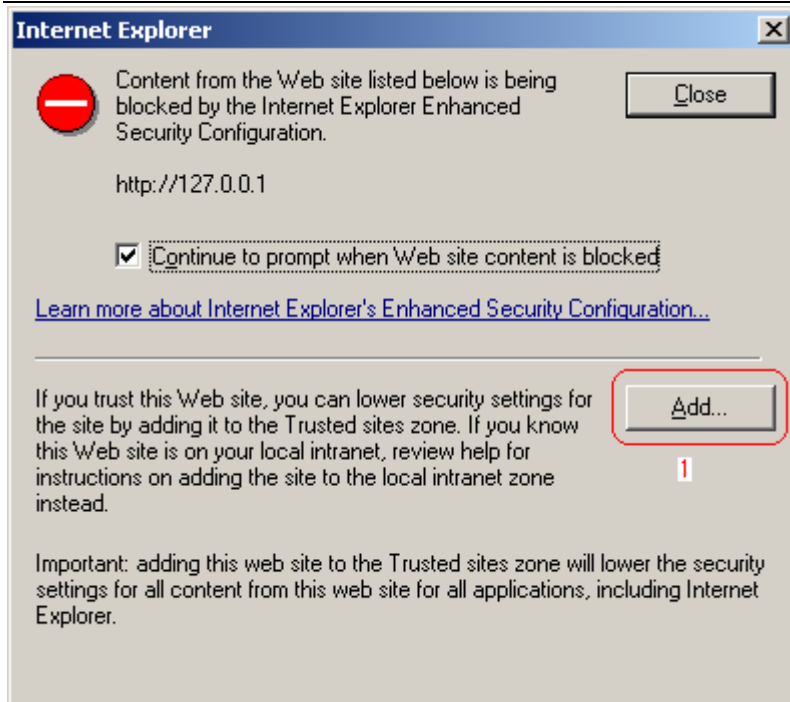
Step 7:

Click "Web Service Extensions"->"Active Server Pages", and then Click "Allow"



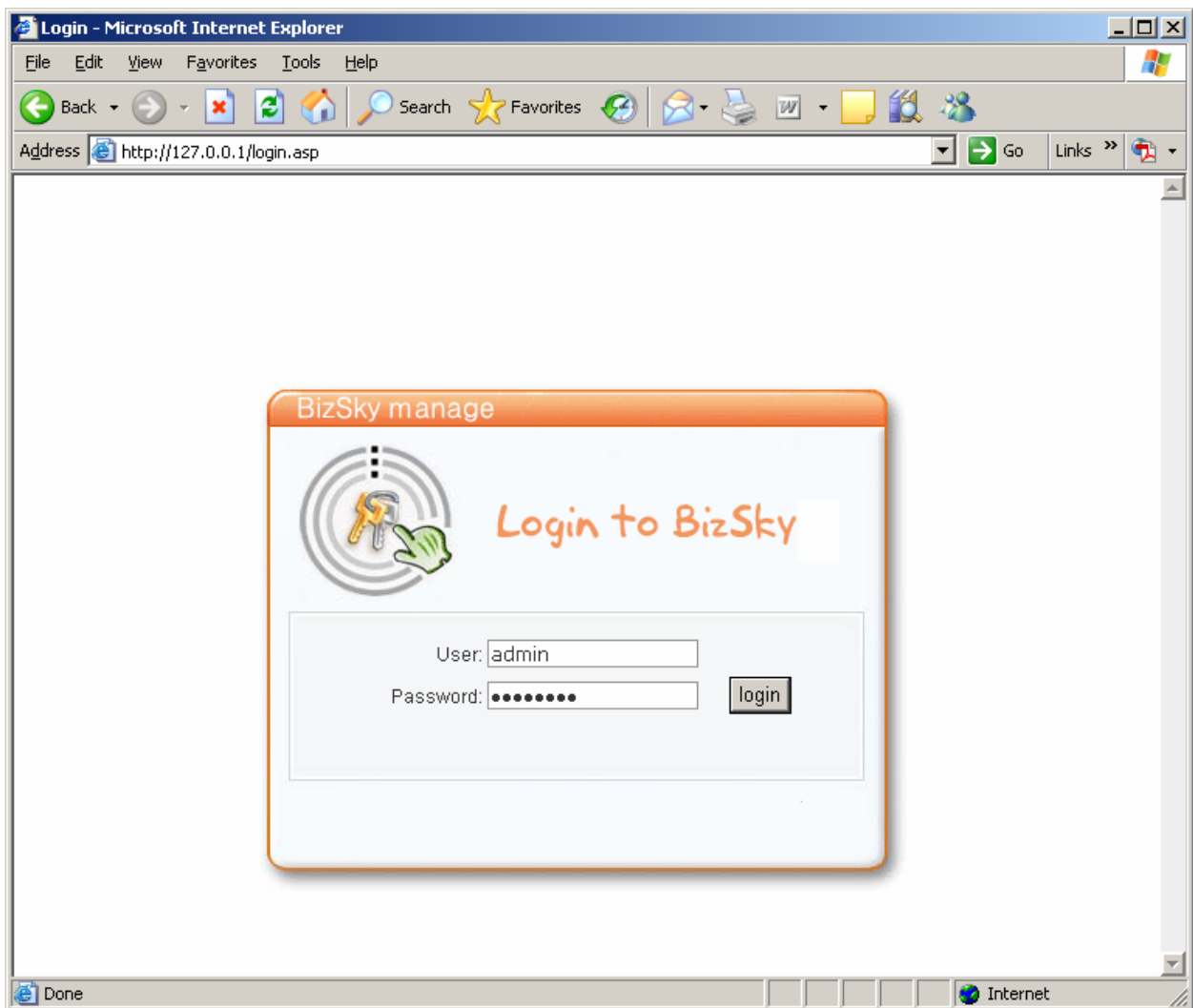
Step 8:

Open IE, Input "http://127.0.0.1", a window pop-up, Click "Add..." add the Web site to the Trusted sites zone. Otherwise some functions will be confined to use.



Step 9:

Open IE, Input "http://127.0.0.1", you should find below webpage (it means IIS configuration is finished successfully). Input user and password to login, Default User is "admin" and password is "password".



(FINISHED)