

**Instruction of the ExSky Software****Installation****1. Install SKY800 hardware card**

According to <SKY800 Hardware Install Guide> ,

Download <SKY800 Hardware Install Guide> from :

<http://www.yeastar.com/download/SKY800HardwareInstall.pdf>

**2. Install ExSky software****3. Configure ExSky software**

According to <ExSky Config Wizard> ,

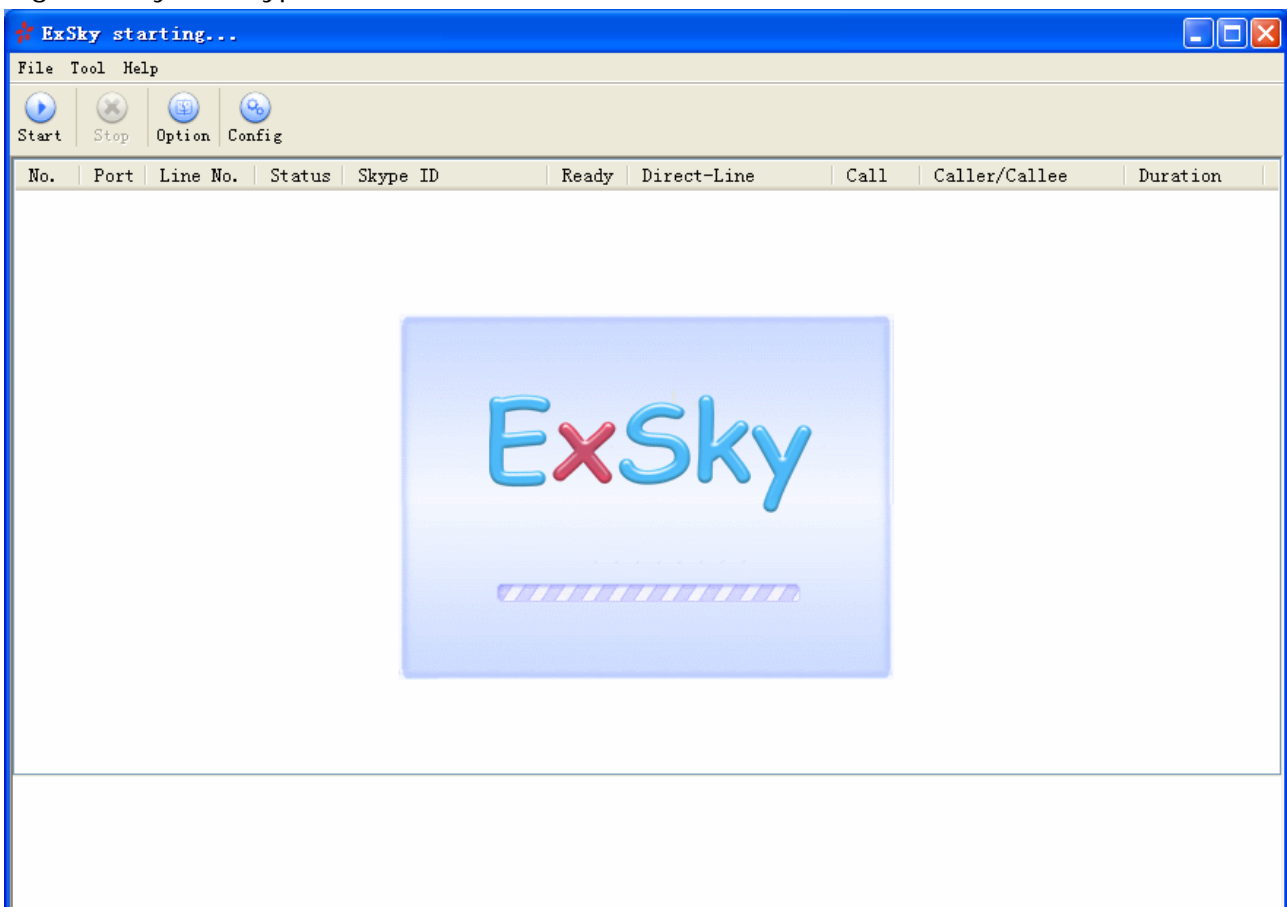
Download <ExSky Config Wizard>from:

<http://www.yeastar.com/download/ExSkyConfigWizard.pdf>

**Please confirm you have been successfully finished the above steps:**

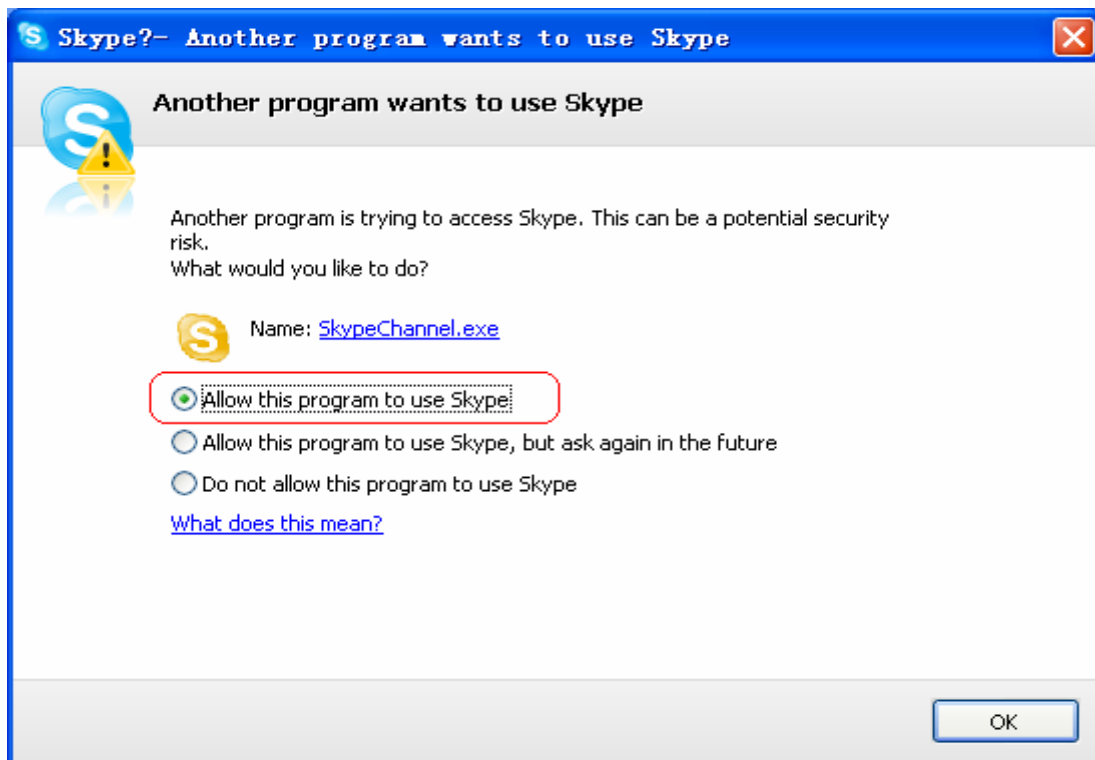
**Set Up**

**Step 1.** Double-click the shortcut on desk to run the software, please wait for few seconds to Sign in all your Skype ID.



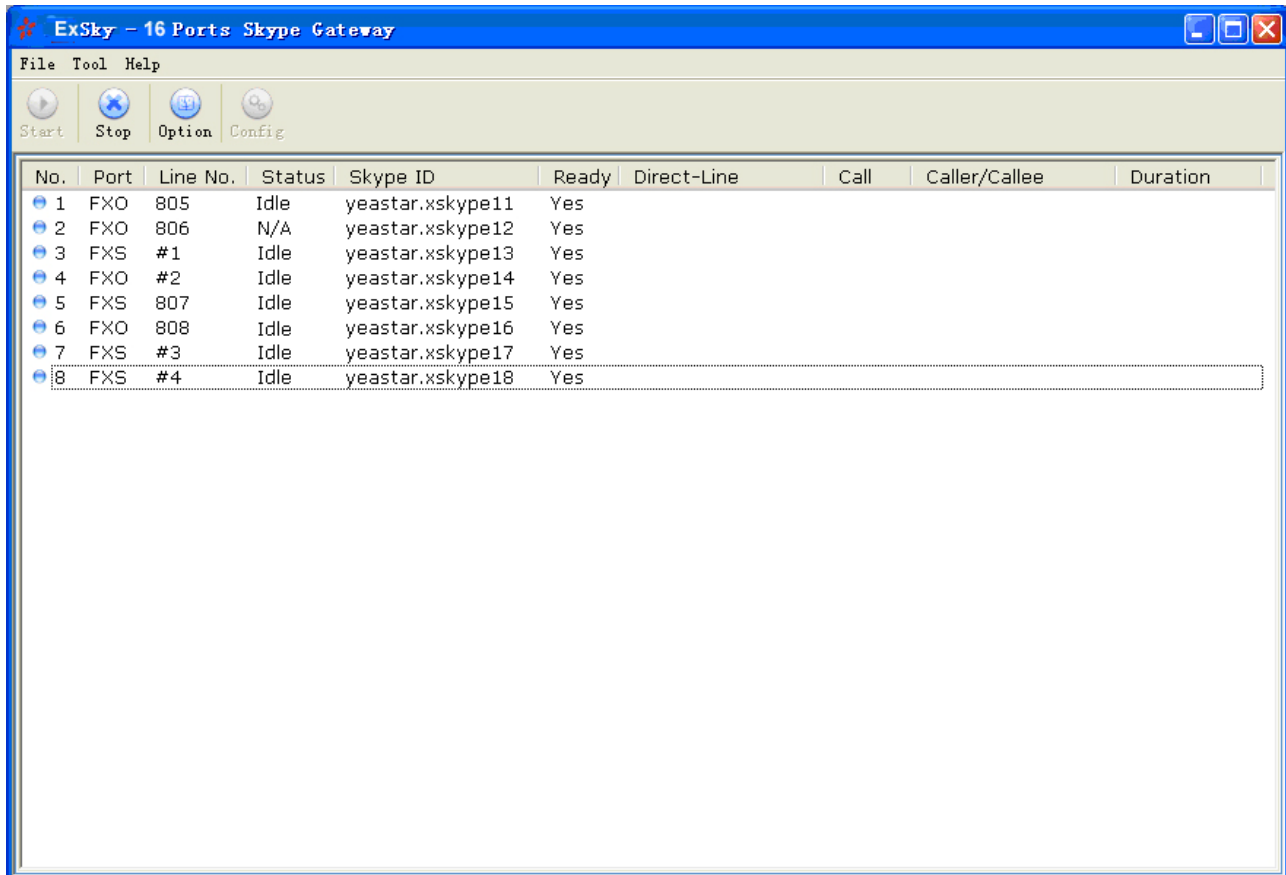
Picture 1

**Step 2.** Allow SkypeChannel.exe program to use Skype for every Skype ID



Picture 2




**Step 3.** Check if the status of all ports and Skype are absolutely normal.



Picture 3

### Description of all items:

#### No. :

- 1)  : Red light means failed initialization, port unavailable or Skype account unavailable
- 2)  : Blue light means succeeded initialization, port corresponded line is idle
- 3)  : Green light means succeeded initialization, port is in service

#### Port:

- 1) FXO: FXO module linked to PBX extension line
- 2) FXS: FXS module linked to PBX CO line
- 3) ERR: Module is not available

#### Line No. :

Phone number linked with this port, which is inputted by administrator. For convenient remember, it can be null.

#### Line Status:

- 1) N/A: FXO port is not linked
- 2) Idle: Port idle
- 3) Busy: Port in service

**Skype ID:**

Skype ID corresponds to the port number.

**Skype Ready:**

- 1) N/A: This port is not configured Skype yet
- 2) Yes: This Skype is ready to use
- 3) No: This Skype is unready to use

**Call:**

- 1) Call in
- 2) Call out

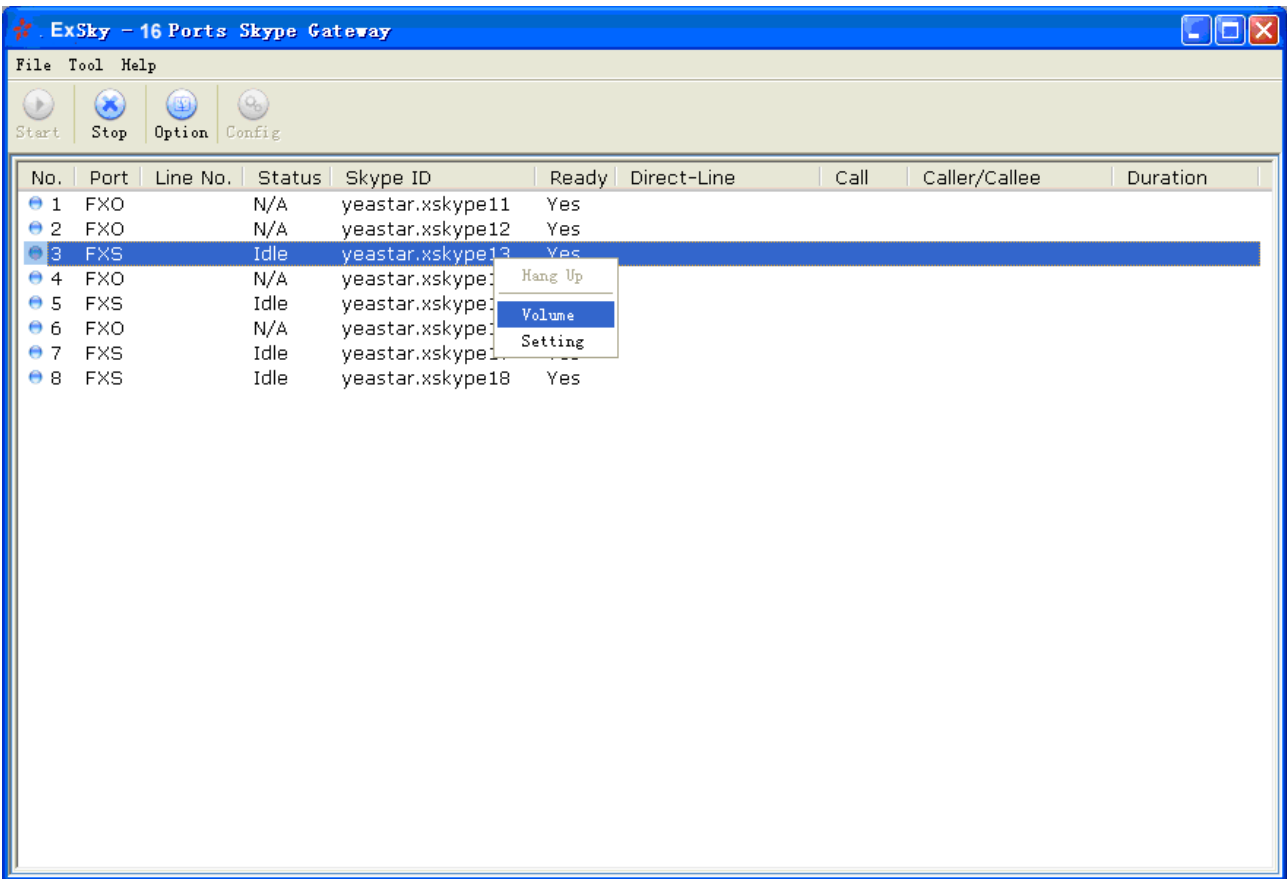
**Caller/Callee:**

The telephone number or Skype ID of the other side

**Duration:**

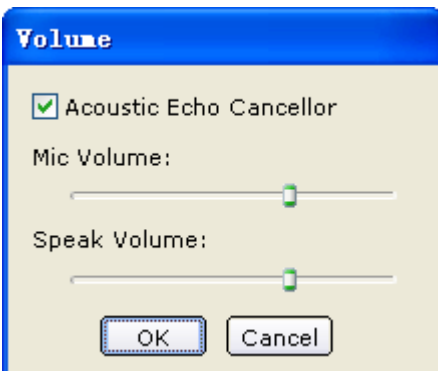
The duration of speaking

**Step 4.** Right-click to adjust the voice volume and set ports:



Picture 4

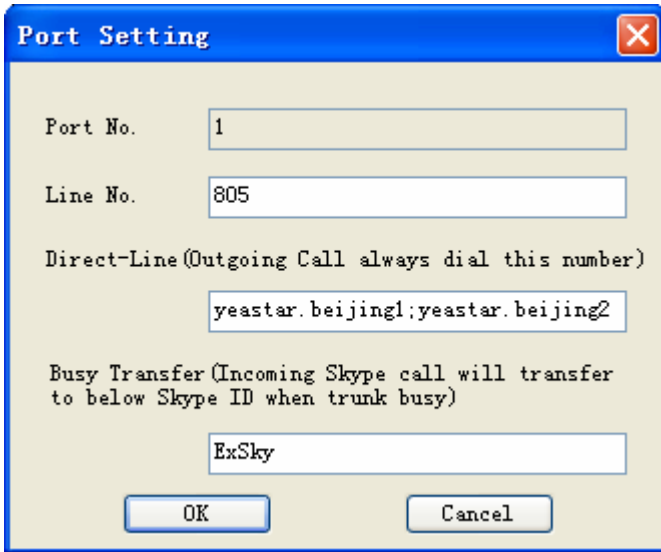
- Set the volume



Picture 5

- Set the port

Right click the port number that you want to set up, and you will find a window as following, then you can set the corresponded options



Picture 6

**Note:**

- Port No.: The port you want to set up.
- Line No.: The telephone number corresponding to this port.
- Direct-line: If you set up this direct line, every time when this port is off-hook, ExSky will help you directly dialing this number, and through this port can only dial this fixed number. Generally this setting is used to connect with branch offices.  
**Note:** You can input mutil-item (Skype ID) and set off them by a semi-colon (e.g. no1;no2;no3). It means a call unsuccessful to first item, it will be passed to next item automatically.
- Busy Transfer: When you set up this function, even if the port is busy, ExSky will transfer calls to those idle Skype IDs.  
**Note:** You can input mutil-item (Skype ID) and set off them by a semi-colon (e.g. no1;no2;no3), It means a call unsuccessful to first item, it will be passed to next item automatically.  
 you can use "ExSky" instead of all trunk's Skype ID. For Example: As Picture 3, "ExSky" equals to "yeastar.xskype11;yeastar.xskype12;..... yeastar.xskype18".

**Step 5.** Set ExSky Options

1) For 'Global'

- Select country for Local Telecom Network. The new setting will not take effect until you restart ExSky!
- Select Max. Number of Talking Channel, It depend on your PC performance. For your information:

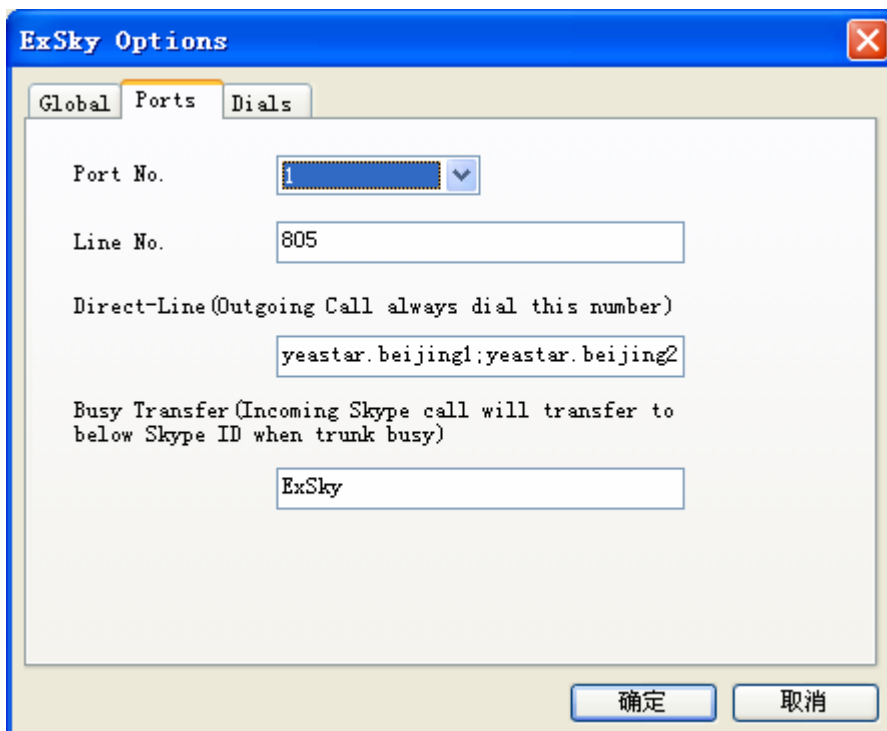
Simultaneous Talking Ports		3	5~6	8~9	15
PC Requirement	CPU	Celeron 2.8G	P4 2.66G	P4 2.8G Dual Core	Intel Core Duo 1.86G
	Memory	512M	1G	1G	1G

- Automatic Attendant and waiting music are set as default  
You can select a new WAVE file for your automatic attendant or waiting music.
- Check 'Start ExSky When I start Windows'



Picture 7

2) For 'Ports'



Picture 8

Rules are as same as Port Setting page.

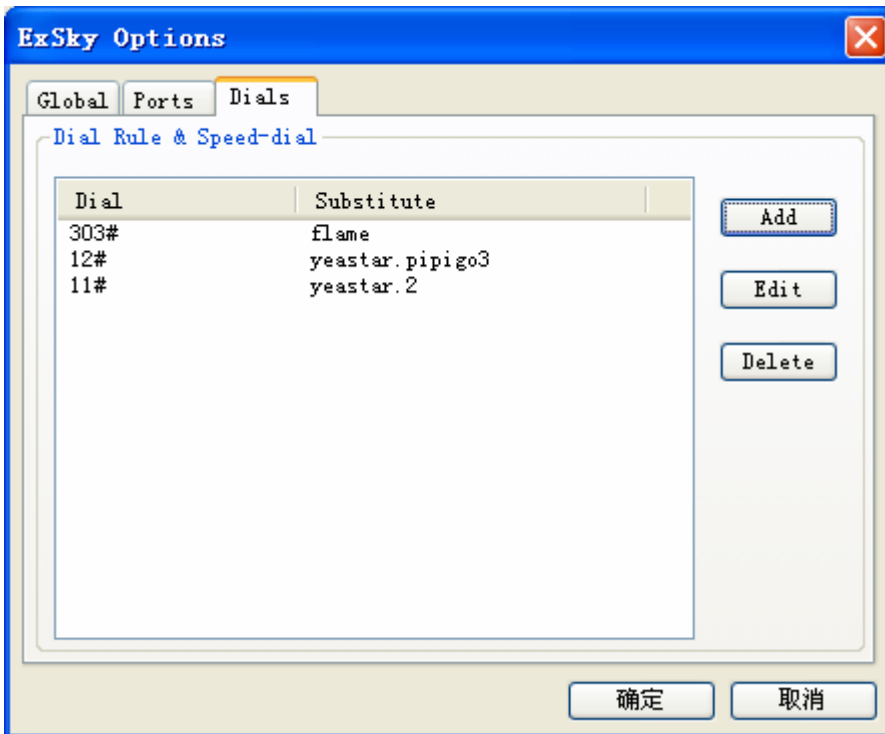
### Application of Direct-line:

For example, use in branch offices that lie at remote places.

If the Skype ID of branch office is yeostar.beijing1 and Yeostar.beijing2, and set it up as Direct-line of 805, in which case ExSky will directly transfer calls to yeostar.beijing1 when someone dial extension number 805, if yeostar.beijing1 is busy, then transfer calls to yeostar.beijing2.

3) For 'Dials'

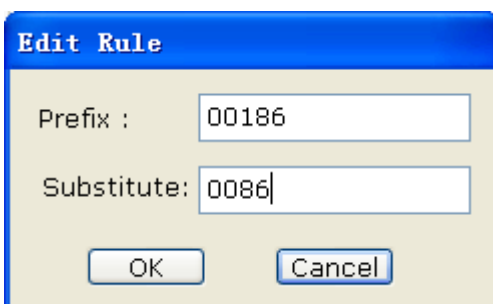
You can define Dial Rule or Speed-dial here for all port. The priority of Dial Rule is in Descend of dial number



Picture 9

4) For 'Edit Rule'

- 'Prefix' is the prefix of dialing telephone number and 'Substitute' is the replacement of telephone number.



Picture 10

For example, set up the Dial Rule as following:

No.	Prefix	Substitute
1	00186	0086
...	...	...
...	...	...
20	1#	00865921234567

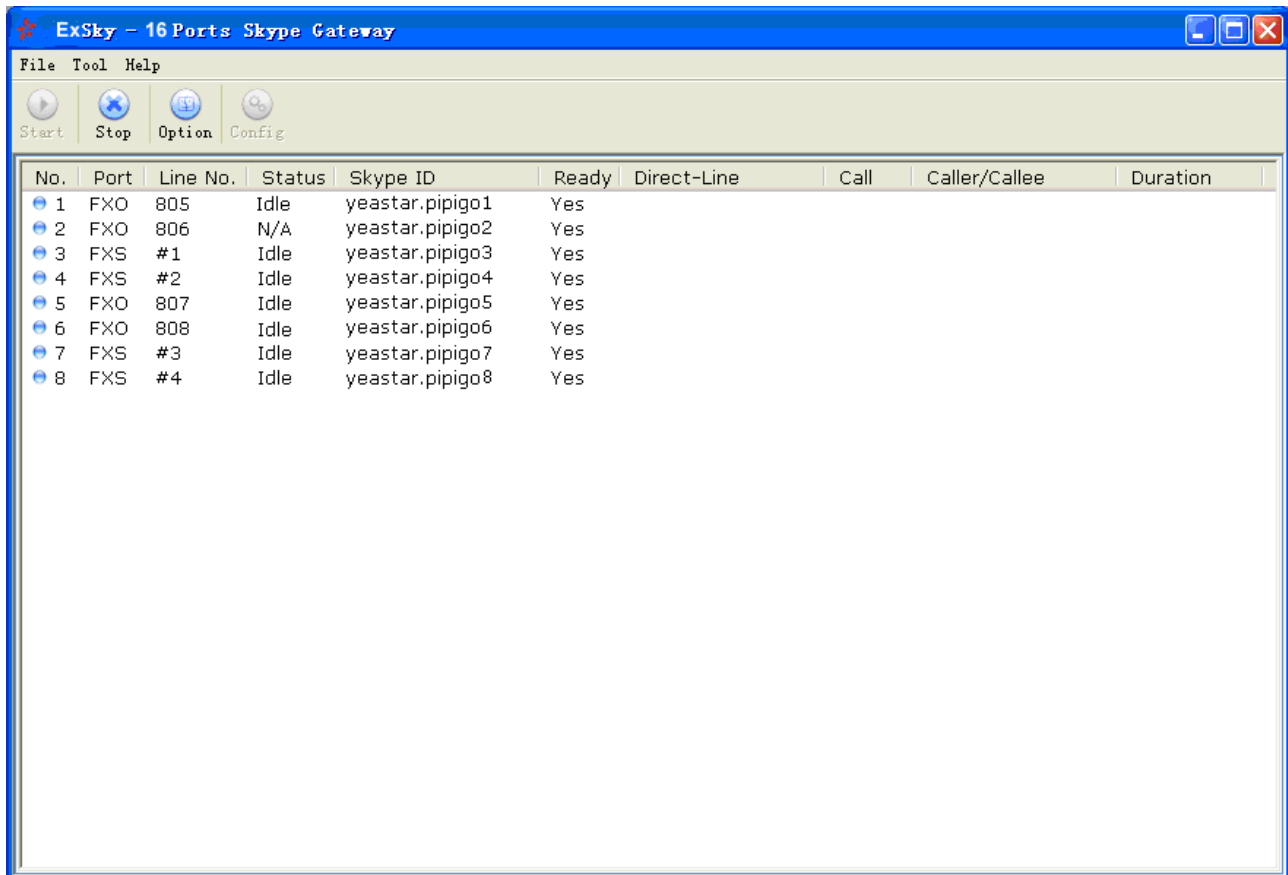
- Keep the dialing habit as same as PSTN

For example, the IDDD (international direct distance dialing) for a PSTN user in Korea is 001+country code+ area code+ telephone number, like 001+ 86+592+5500000. While the VoIP provider (Skype) requires the way as 00 + country code+ area code+ telephone number, like 00+86+592+5500000. Follow up the above way to keep the dialing habit as usual.

- Speed Calling, like No. 20. user dial 1#, Skype will call out 00865921234567

## Usage of ExSky

For example, when you finished with set up ExSky, every port's corresponding Skype ID and Line No. as the following **Figure** :



Picture 11

Other PBX Ext. lines are: 801, 802, 803,804...

And have call out credit on Skype ID 'yeastar.pipigo3'

- **SkypeOut**

**Make the reference of the Figure 1 on above.**

For example you wan to call a client, his number is 0015555555.

**Model 1: Call through extension line 805**

- 1) Off hook, dial 805
- 2) Hear the dial tone
- 3) Then dial the callee number 0015555555

**Model 2: Call through CO line #1**

- 1) Off hook, dial #1
- 2) Hear the dial tone
- 3) Then dial the callee number 0015555555

- **Calls between Branch Offices**

For example there are two offices lie in different places, one in New York and another in London. The ExSky of these two branch offices are set up as following:

New York Office				
No.	Port	Line No.	Skype ID	Direct-Line
1	FXO	805	NY01	
2	FXO	806	NY02	
3	FXS	#1	NY03	
4	FXS	#2	NY04	
5	FXO	807	NY05	
6	FXO	808	NY06	London01
7	FXS	#3	NY07	
8	FXS	#4	NY08	

Other PBX Ext. line No.: 805,806,807.....

London Office				
No.	Port	Line No.	Skype ID	Direct-Line
1	FXO	901	London01	
2	FXO	902	London02	
3	FXS	#3	London03	
4	FXS	#4	London04	
5	FXO	903	London05	
6	FXO	904	London06	
7	FXS	#2	London07	
8	FXS	#1	London08	

Other PBX Ext. line No.: 905,906,907.....

## Picture 12

If you are now in New York office and you want to call the extension line 905 of London office  
Steps:

- 1) Set SkypeID London01 as the direct-line of Skype 'NY06'
- 2) Off hook, dial 808
- 3) Hear the automatic attendant from London office ExSky
- 4) Then dial the extension number 905

**● WebCall**

**Make the reference of the Picture 11 on above.**

**Model 1: Call through FXS port**

- 1) To register a Skype ID 'yeastar.pipigo8' as the special usage
- 2) Release this ID on website as 'SkypeMe'
- 3) Client will call this ID and then hears a automatic attendant from PBX
- 4) Then client could dial the number according to the PBX warning message.

**Model 2: Call through FXO port**

- 1) To register a Skype ID 'yeastar.pipigo5' as the special usage.
- 2) Release this ID on the website as 'SkypeMe'
- 3) Client will call this ID and then hears a automatic attendant from ExSky
- 4) Then client could dial the number according to the automatic attendant message.

**(FINISH)**