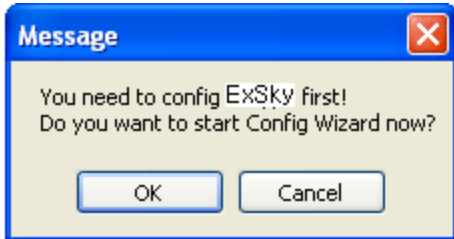


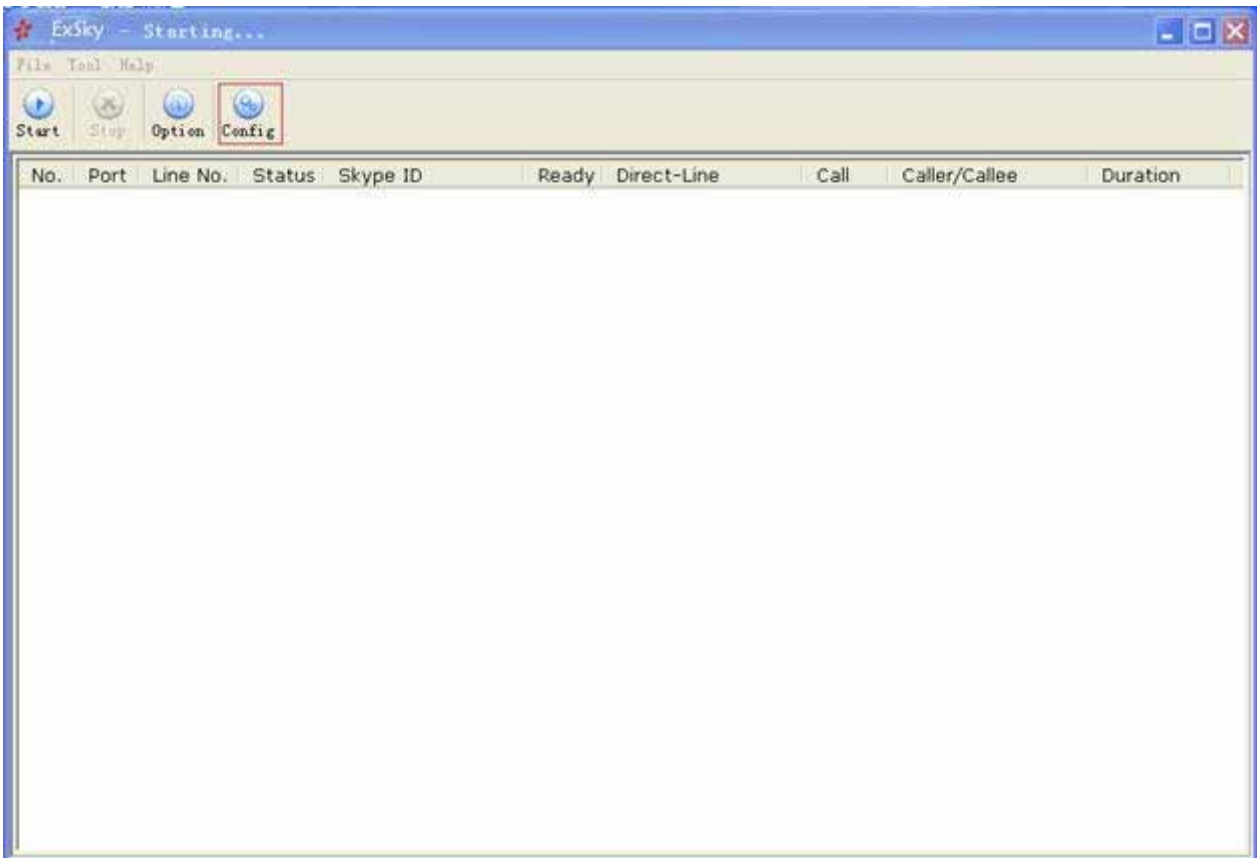
Configure the ExSky by Wizard

KEYWORD: ExSky, BizSkype, SKY800, Skype, PBX, Skype Exchange, Skype Gateway, Trunks, Business, Web Call, Skype Me, SkypeOut, Skypeln

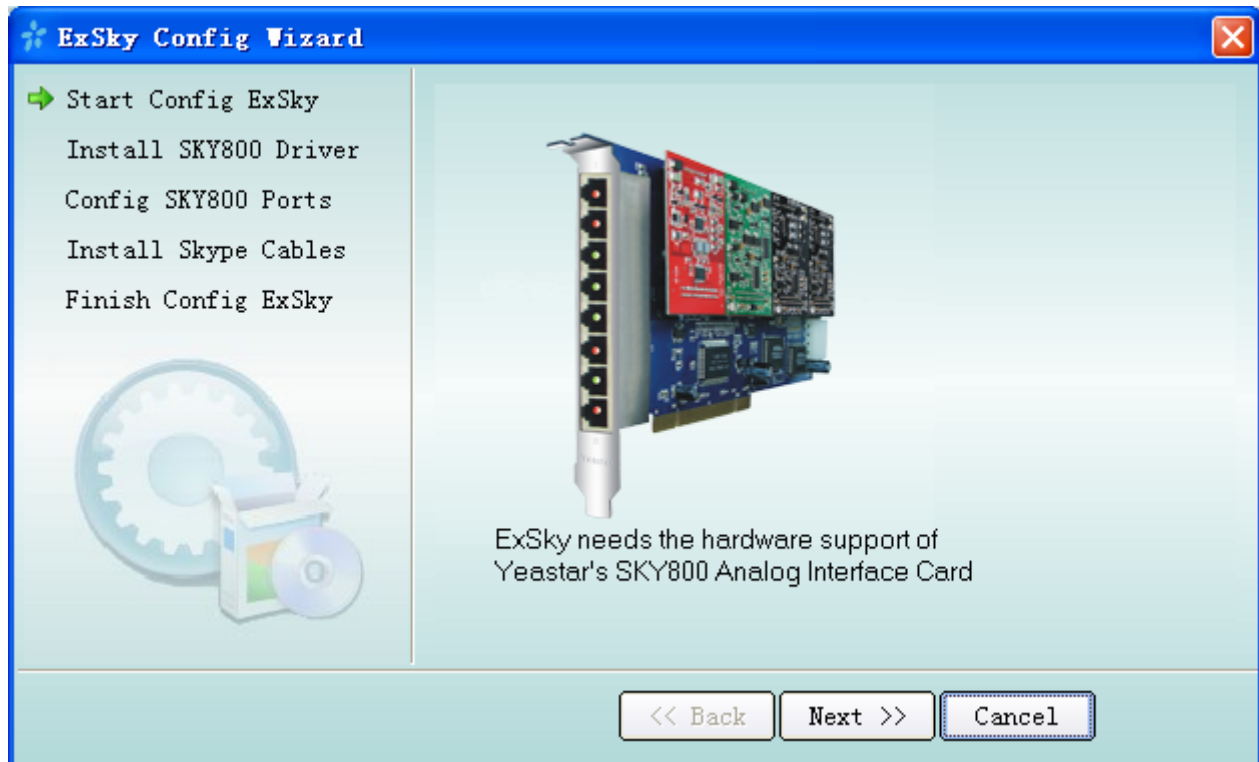
When you first run the ExSky, a window will pop-up, click 'Yes', start Config Wizard.



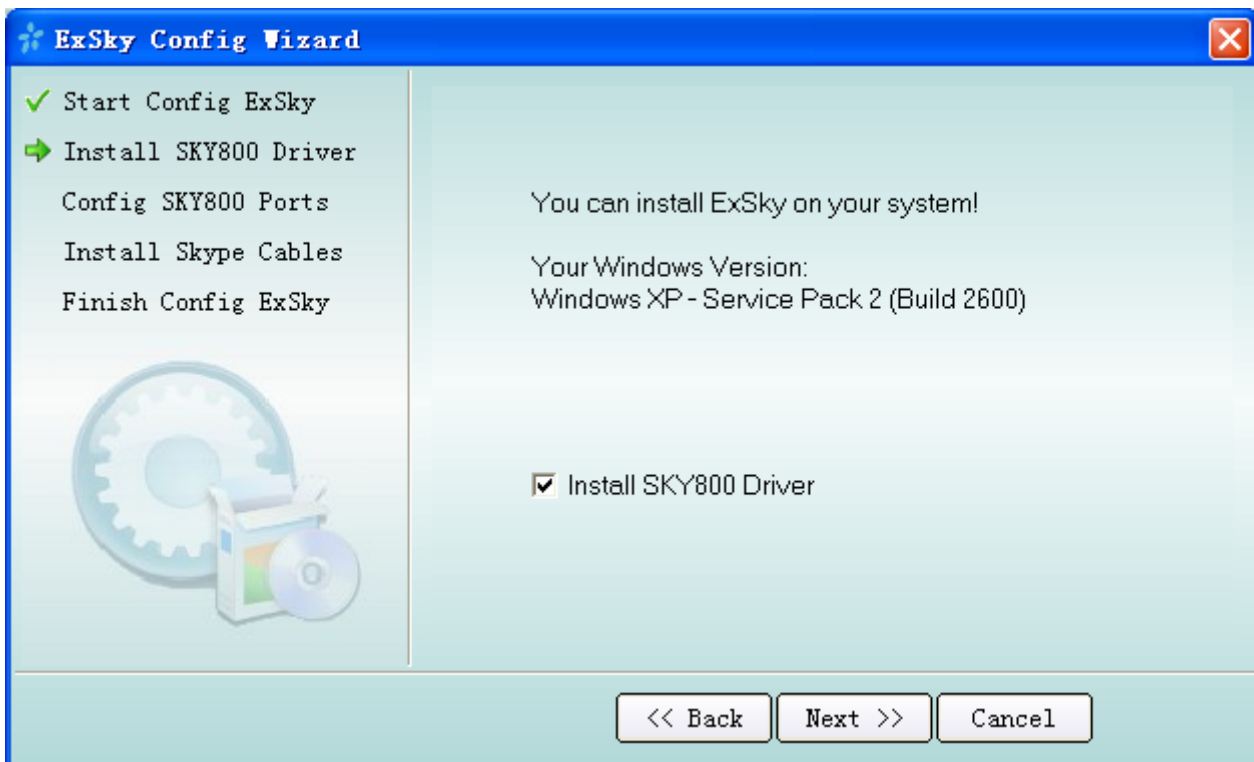
Or else you can Click 'Config' to Start ExSky Config Wizard.



Step 1: Click 'Next'



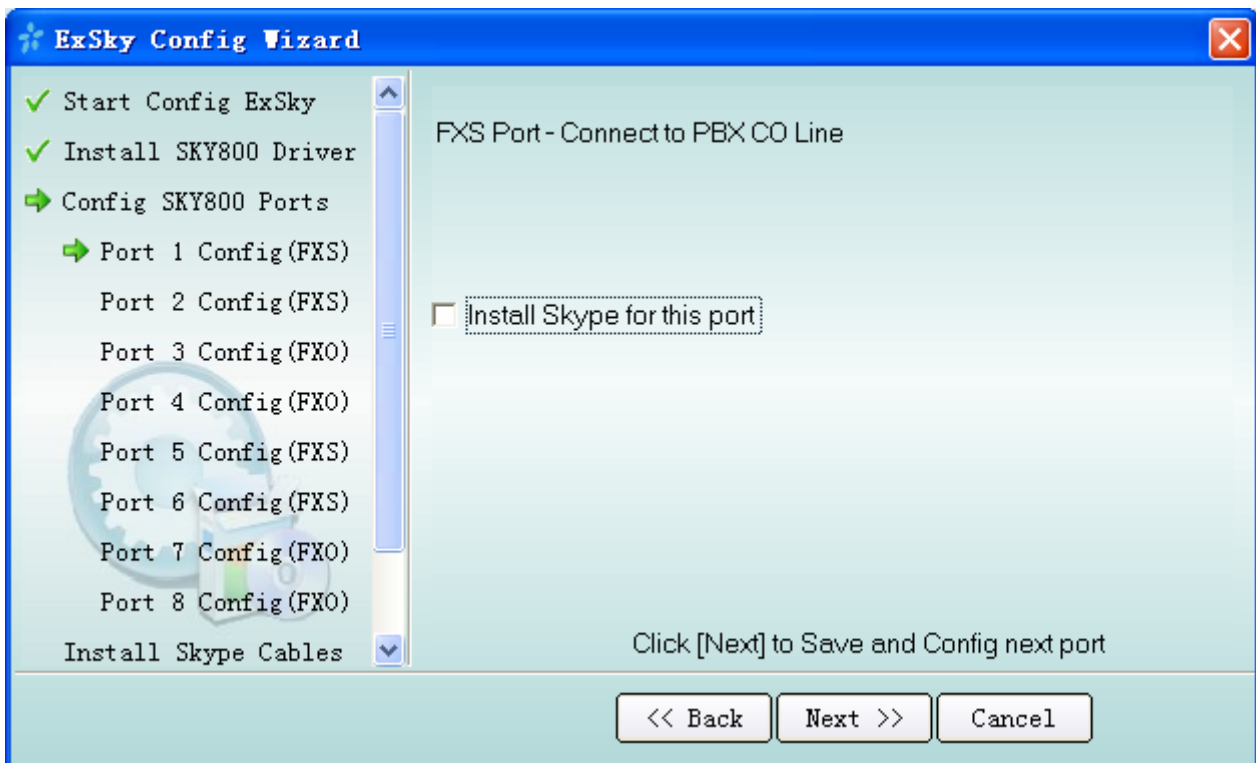
Step 2: Check 'Install SKY800 Driver' and then 'Next'



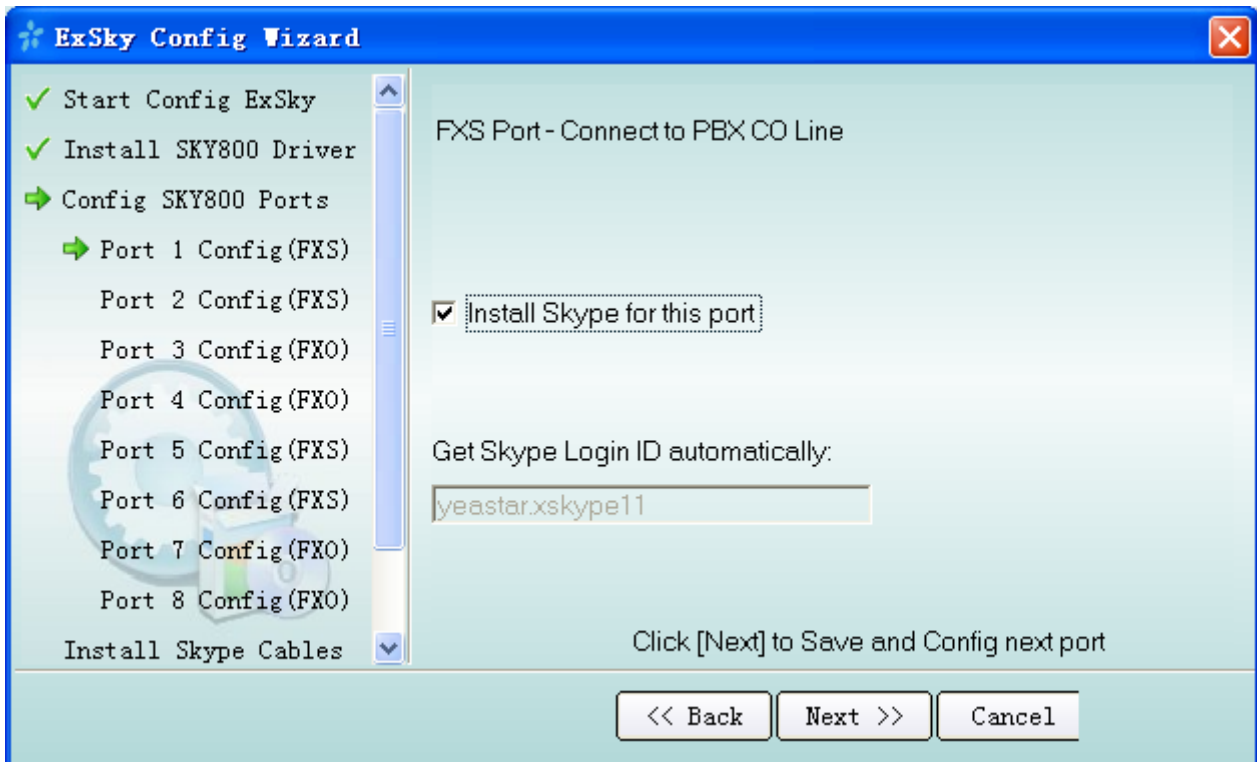
Step 2-a: Maybe you will find a prompt from the system, click 'Continue Anyway'



Step 3: Click 'Install Skype for this port' and you will find a Skype

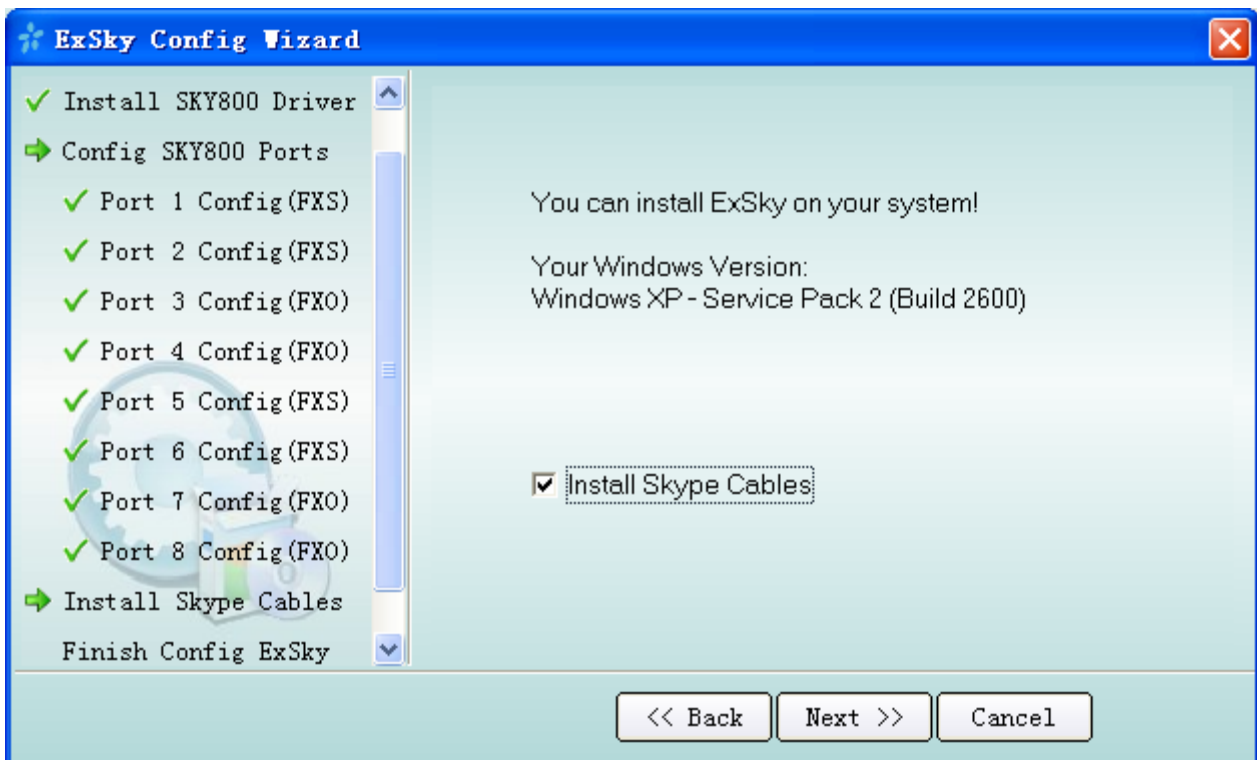


Create a new Account or Input existing Account, then Signin Skype. After Signin successful, click 'Next' to config next port.



Notes: Same operation as Step 3 to install and config other Skype for the rest ports. You should use unique Skype ID for each port.

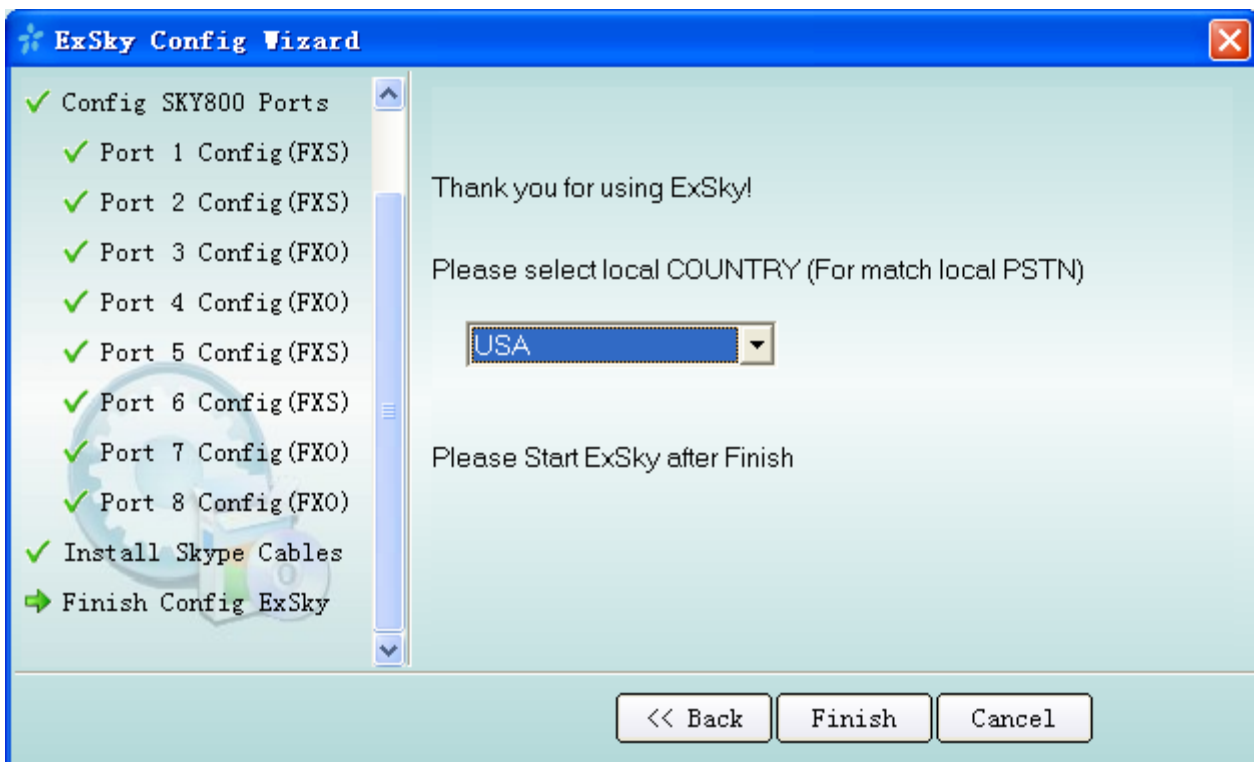
Step 4: Check 'Install Skype Cables' and then 'Next'



Step 4-a: Maybe you will find the prompt again, click 'Continue Anyway'



Step 5: Select your country and 'Finish' configuring.



Now you have successfully finished configuring ExSky.