

Trixbox/Elastix+SiSky (Skype Landline Gateway) Solution

1. Introduction	2
1.1 Solution Overview	2
1.2 Flow Chart	2
1.3 Environment	2
2. Installing SiSky Server	4
2.1 Installing SiSky Software	4
2.2 Configuring Skype Accounts	8
3. Installing Trixbox/Elastix	16
4. Connecting Trixbox/Elastix with SiSky Server	17
4.1 Configuring SiSky Server	17
4.1.1 Set SiSky Options	17
4.1.2 Set Dial Rule for SiSky	20
4.1.3 Set Skype incoming call route in SiSky	22
4.2 Set Trixbox/Elastix	23
4.2.1 Connect Trixbox/Elastix to SiSky Server(use P2P mode)	23
4.2.2 Set Outbound Route	24
5. Sample	26

Yeastar Technology Co., Ltd.

1. Introduction

1.1 Solution Overview

SiSky is a 100% software Skype gateway that supports maximum 30 channels on a single computer. Utilizing SiSky gateway with soft switch, businesses can substantially save on both domestic long-distance and international calls.

Firstly install SiSky on a server and then dock the soft switch in the IP address of SiSky server, users can make the calls to any landline number (PSTN & Mobile) at low SkypeOut rates on the normal desk phone without any habits changed.

1.2 Flow Chart



1.3 Environment

SiSky Server Requirements:

This requirement is for 30 concurrent calls.

CPU	Intel Xeon X5410 * 2
Mainboard	MCH Intel 5000V ICH Intel 6321ESB
Memory	ECC 2G * 2
Disk	SATA 80G 7200rpm
Power Supply	AC Input: 100~240V, 50~60Hz,3~6A; AC Output: 600W (MAX)
Network	RJ45 (100M Ethernet)
OS	Windows XP / 2003
Internet	Dedicated Broadband

Connection	downlink \geq 2Mbps, uplink \geq 1Mbps
------------	--

Soft Switch Platform:

Type	Trixbox
------	---------

Best Application

Skype Unlimited Calls Subscriptions

Management

Load Balancing: system will distribute the call rate equally among all trunks

Correct Billing System: Whether to not to answer SIP incoming calls immediately. System takes with reversal signal that can charge the calling time correctly.

Compatibility

Compatible with all soft switch platforms support with standard SIP protocol

Carrier Class Stable Performance

30 Channels in a single server is unique to SiSky Skype gateway.

Non-destructive control of Skype voice stream to assure the excellent call quality.

2. Installing SiSky Server

2.1 Installing SiSky Software

This section shows how to install SiSky EE software on the PC.

Note: Before installing SiSky software, you should first **uninstall** Skype software on your computer if you already have Skype software installed.

Steps:

1. Download software from website <http://www.yeastar.com>. And Double-Click to Start Installation Process.
2. A **Welcome to the SiSky Installation** screen will come up. Click **Next** to continue. See Figure 2-1.

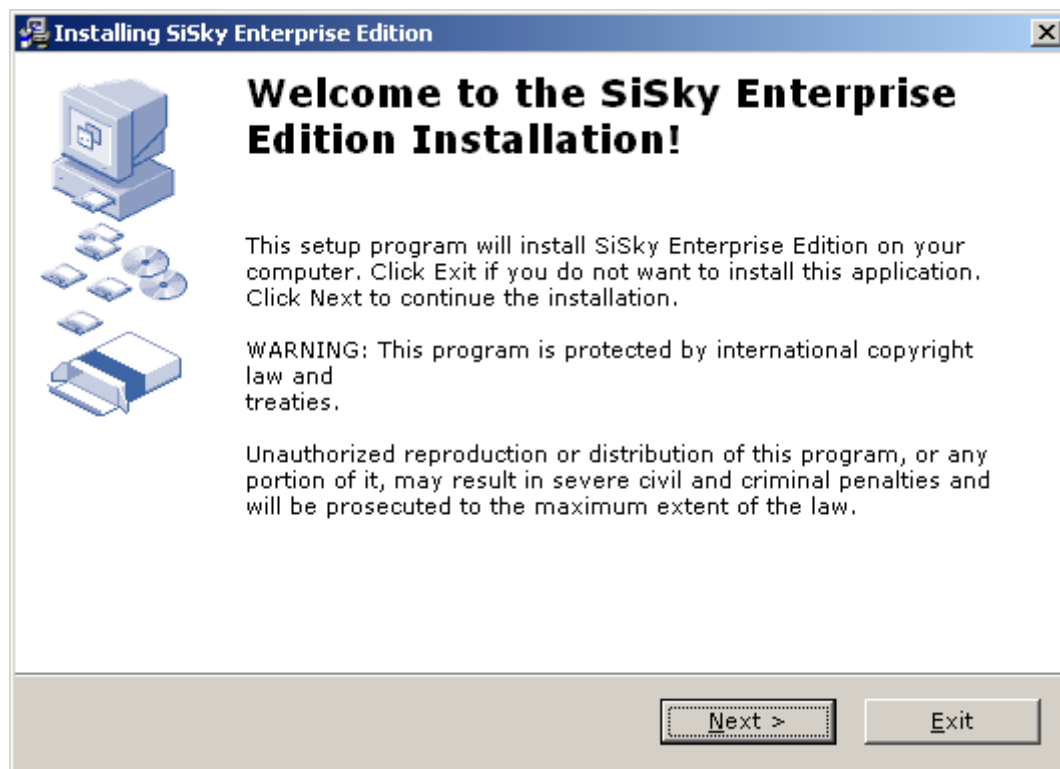


Figure 2-1

3. Read through the software **License Agreement**, select **I agree with the above terms and conditions**, and then click **Next** to continue. See Figure 2-2

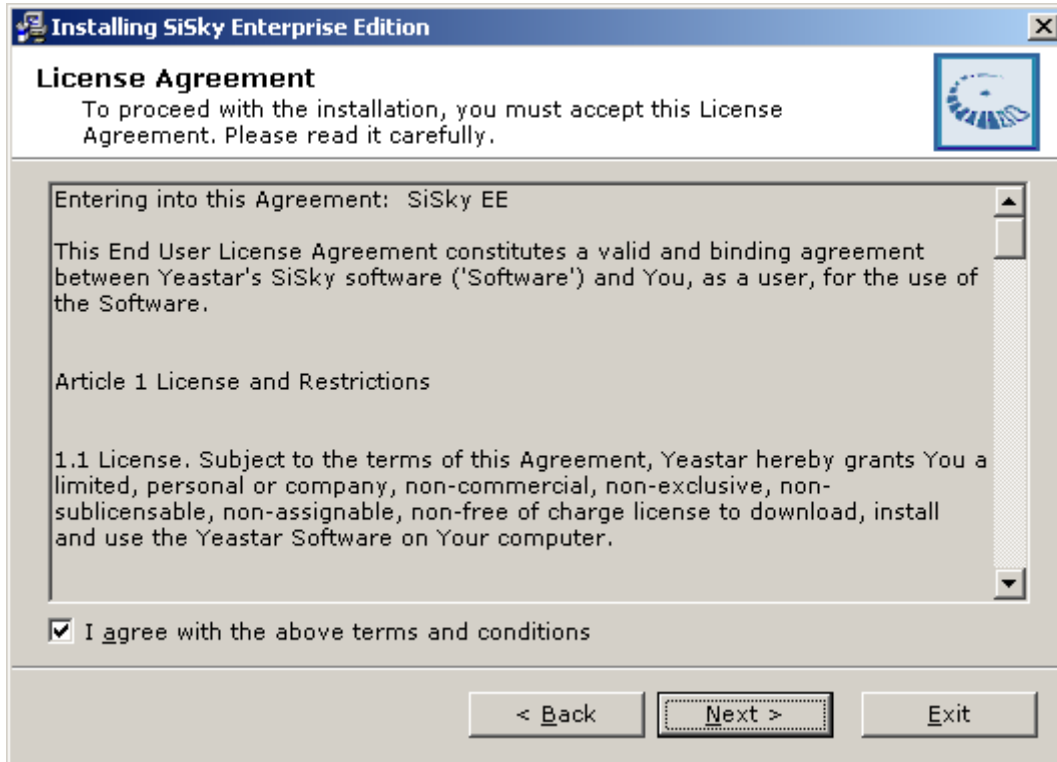


Figure 2-2

4. A Readme info window will appear. Click **Next** to continue.

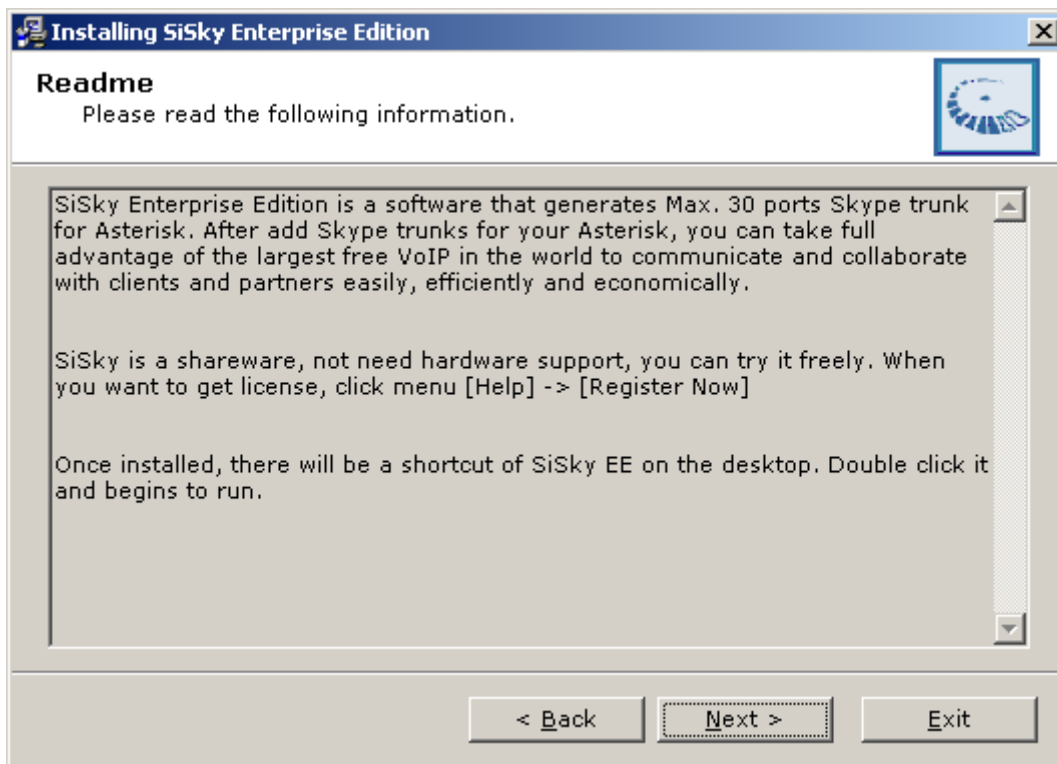


Figure 2-3

5. The **Destination folder** window will offer you the option where you would like SiSky to

be stored on your computer. Click **Next** to continue.

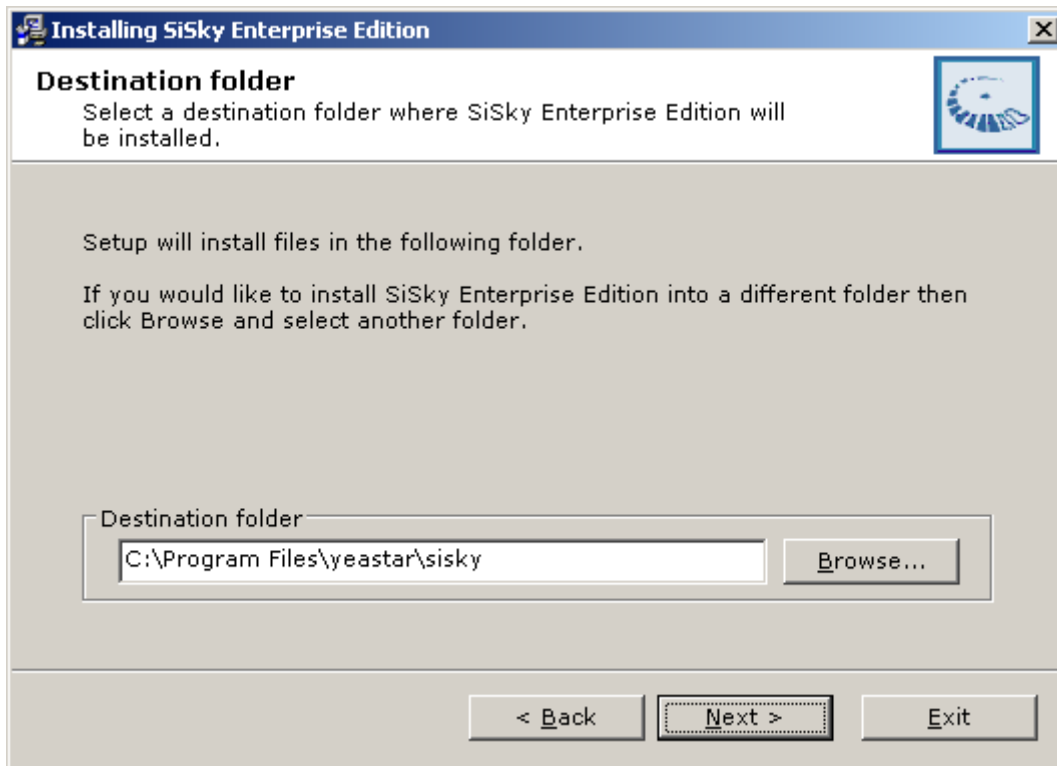


Figure 2-4

6. Enable the options by your own demands, and then click **Next**.

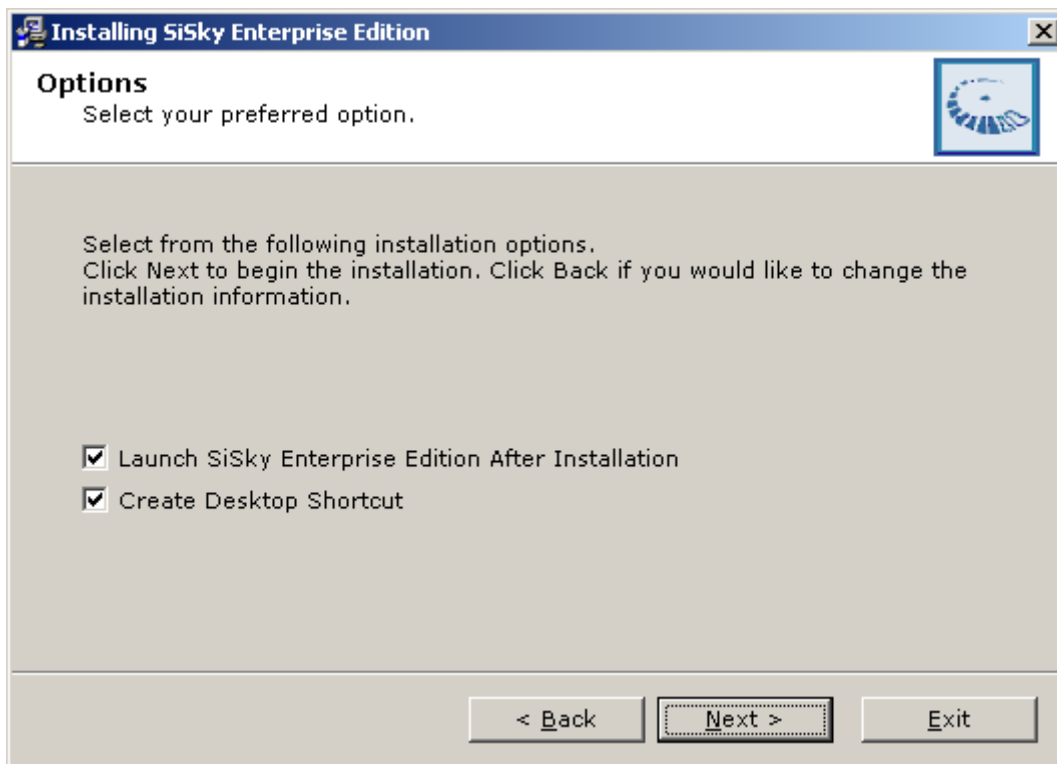


Figure 2-5

7. Enter into the **Installing Files**, system begin to configuration, which will last for a

while.

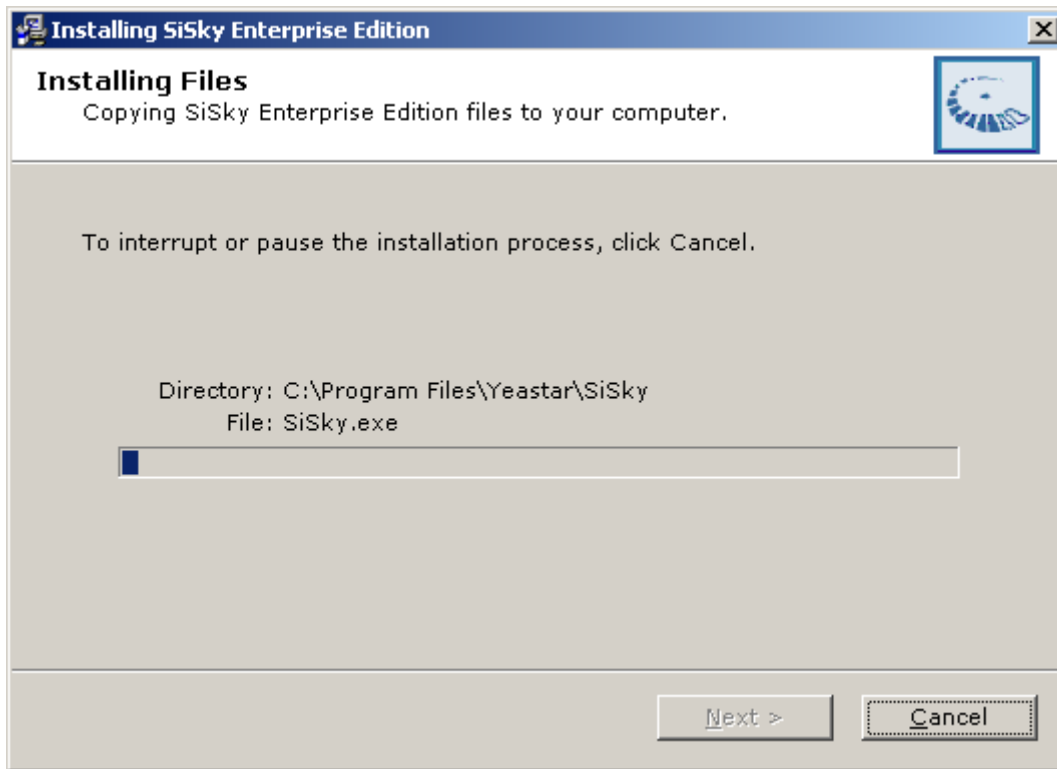


Figure 2-6

8. When the installation is complete, a screen will pop-up to notify you that the software is installed successfully. Click **Finish**.

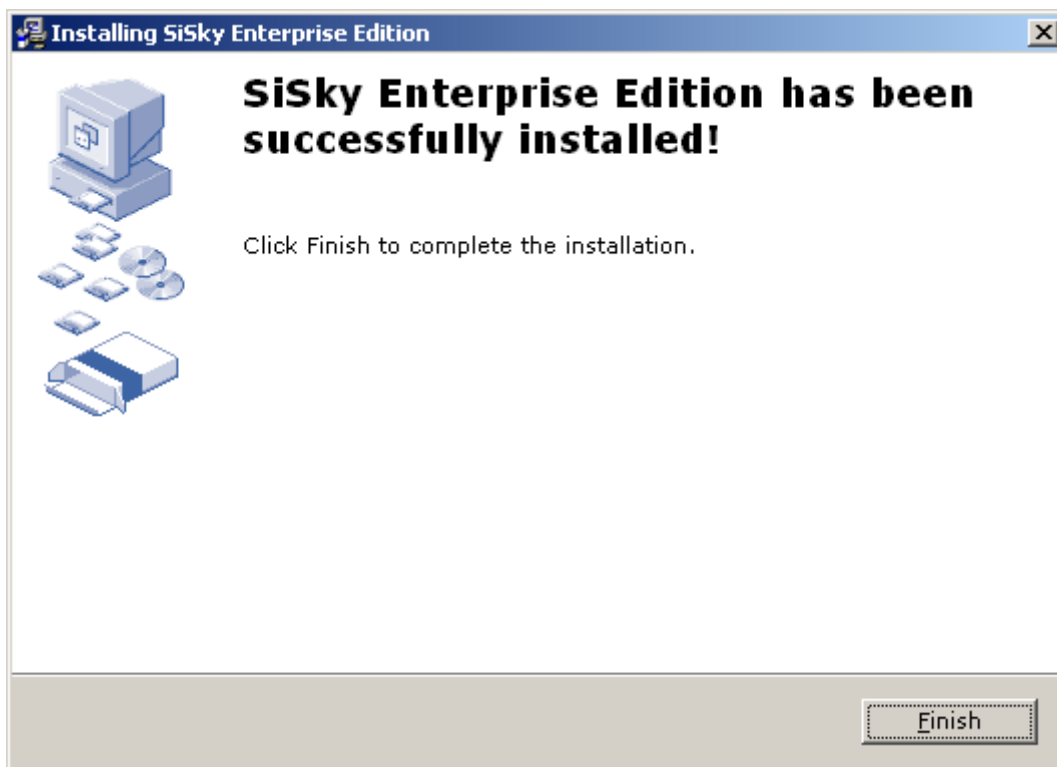


Figure 2-7

9. The final screen reminds you to restart computer in order to complete the installation.

You would better to restart now.

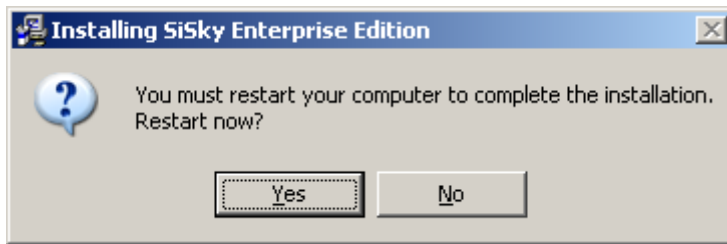


Figure 2-8

10. Launch SiSky to enter the next chapter.

2.2 Configuring Skype Accounts

Step 1: Configure SiSky through Wizard

On initial use, a **Message** screen will pop-up and click 'Yes' to launch the Wizard.

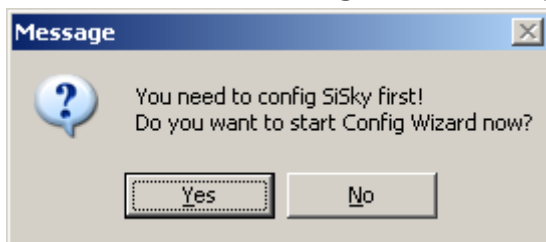


Figure 2-9

Or you can click the **Config** on SiSky to launch the Wizard. (If the **Config** button is invalid, please click **Stop** to stop SiSky first)

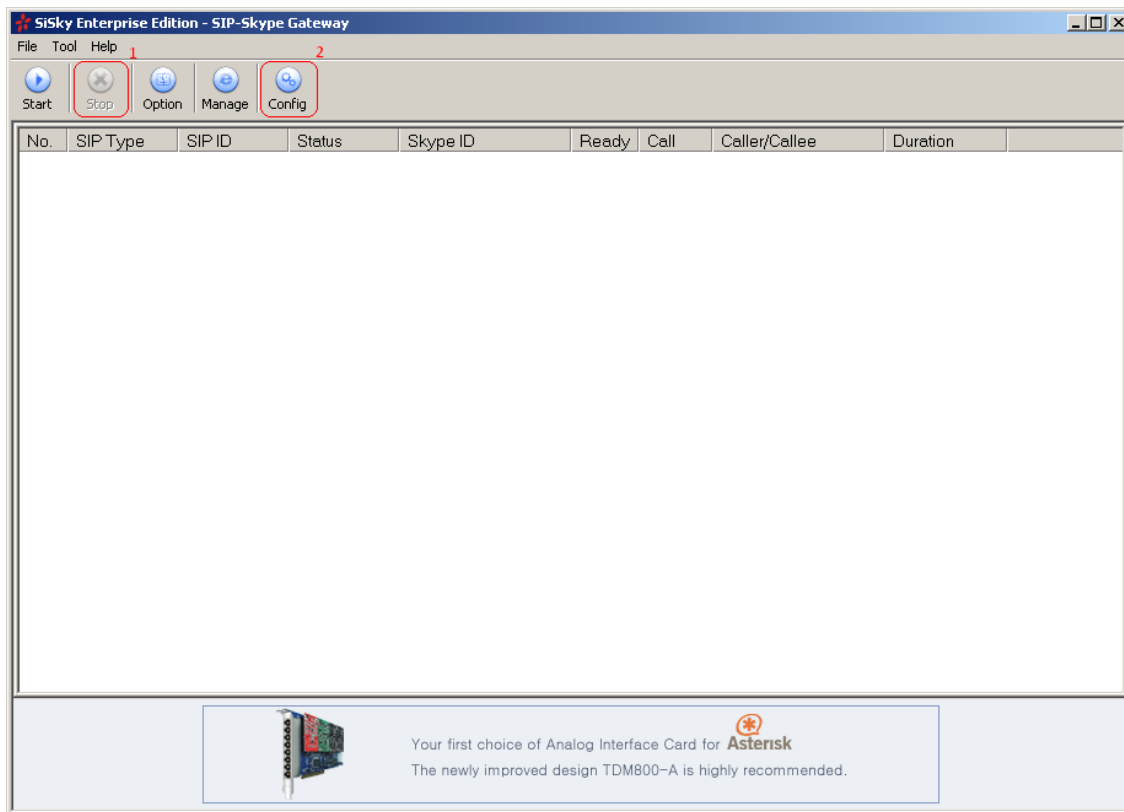


Figure 2-10

Step 2: Launch the Config Wizard

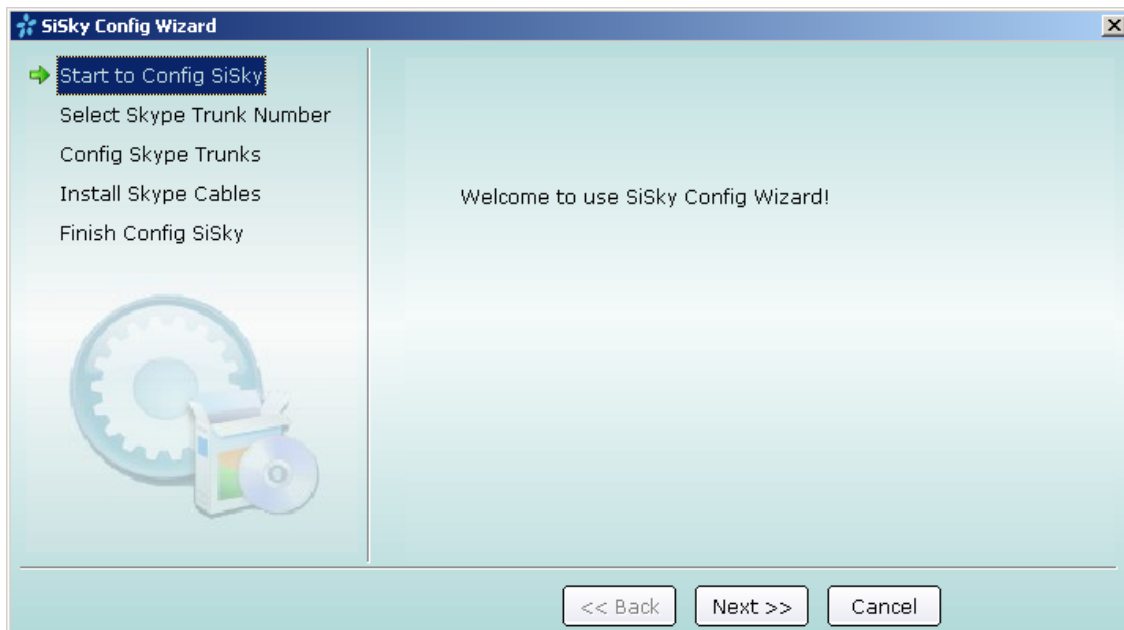


Figure 2-11

Step 3: Select Skype Trunk Number

Select the **Skype Trunk Number** and then click **Next**

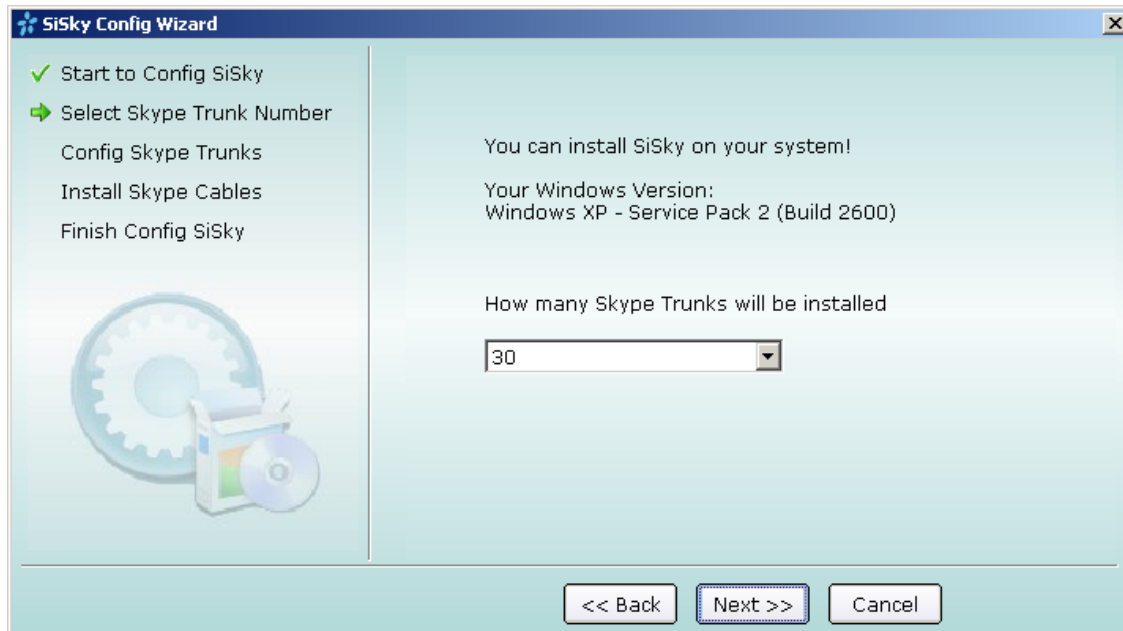


Figure 2-12

Step 4: Configure Skype for Each Port

Enable **Install Skype for this port** and Skype will launch.

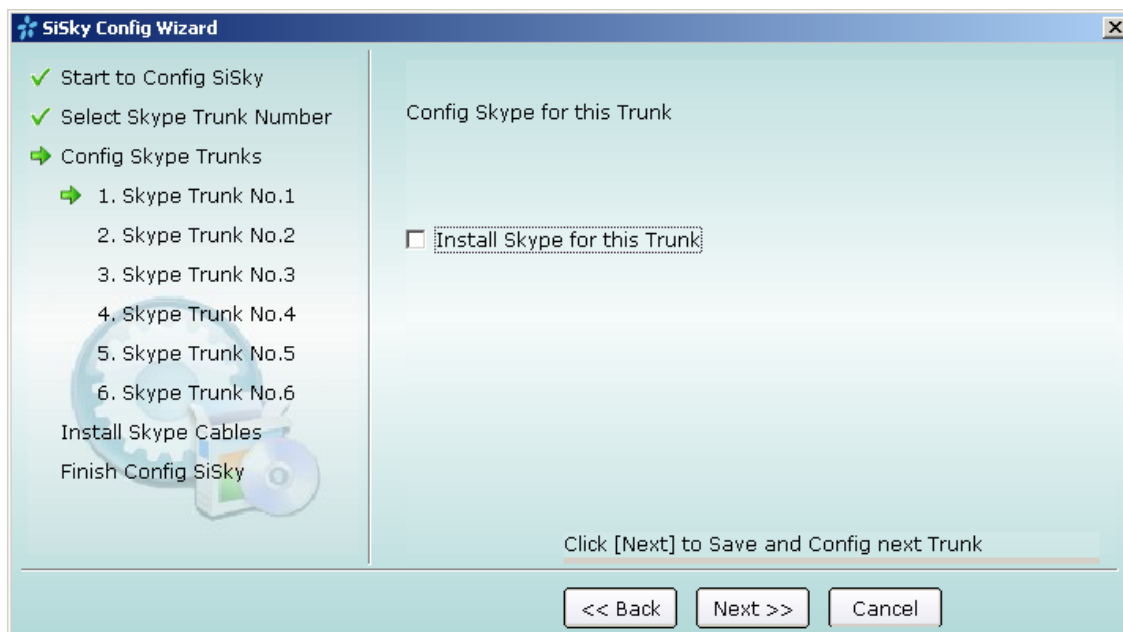


Figure 2-13

A **Skype?—Creat Account** will appear. Create a new account (see Figure2-14) or Cancel it and log in by using an existing Skype account.

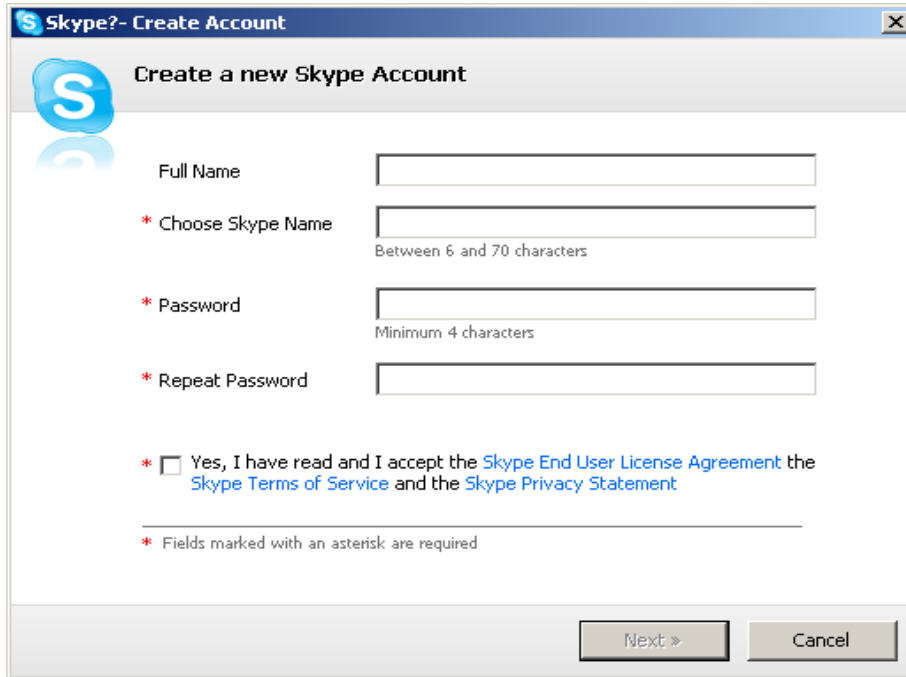


Figure 2-14

Enable the **Sign me in when Skype Starts** and wait for Skype to log you in.



Figure 2-15

When SiSky get the Skype Name automatically, the configuration of Port 1 is finished. Click **Next** to configure other ports by the same way.

Note: After these steps are complete, repeat step4 to configure the remaining ports and their Skype accounts. When the remaining ports are configured, there will be a green tick before every port. See Figure 2-16

Step 5: Install Skype Cables

Enable **Install Skype Cables** and click **Next** to continue.

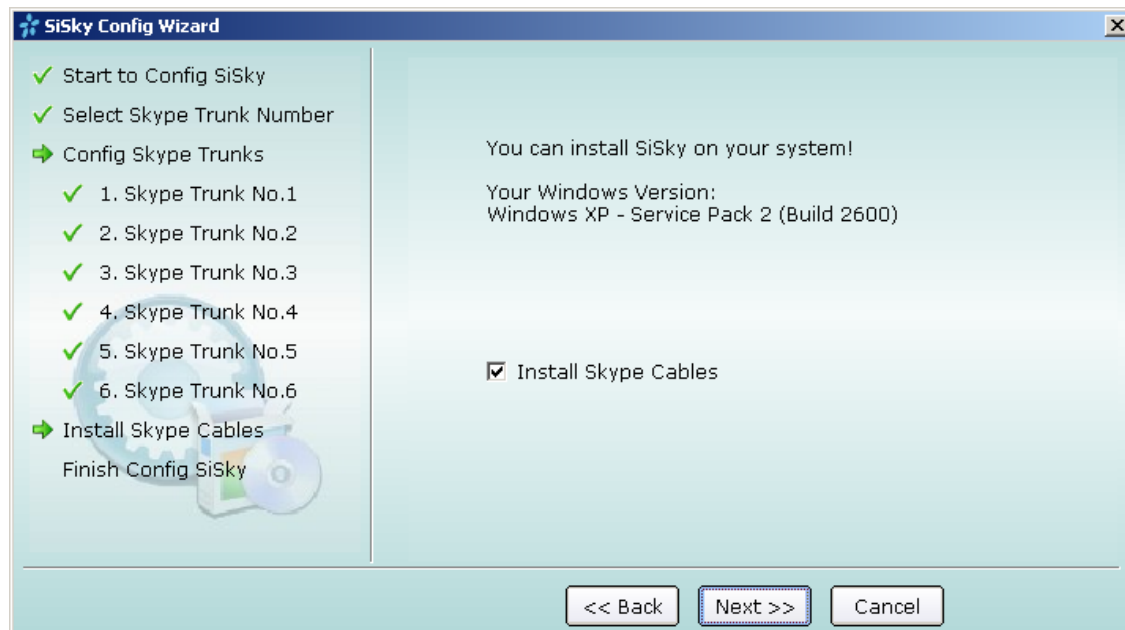


Figure 2-16

The following window maybe will appear during the system installation. Click **Continue Anyway**



Figure 2-17

Step 6: Finish Config. Wizard

Select the country you are living, and then click 'Finish'.

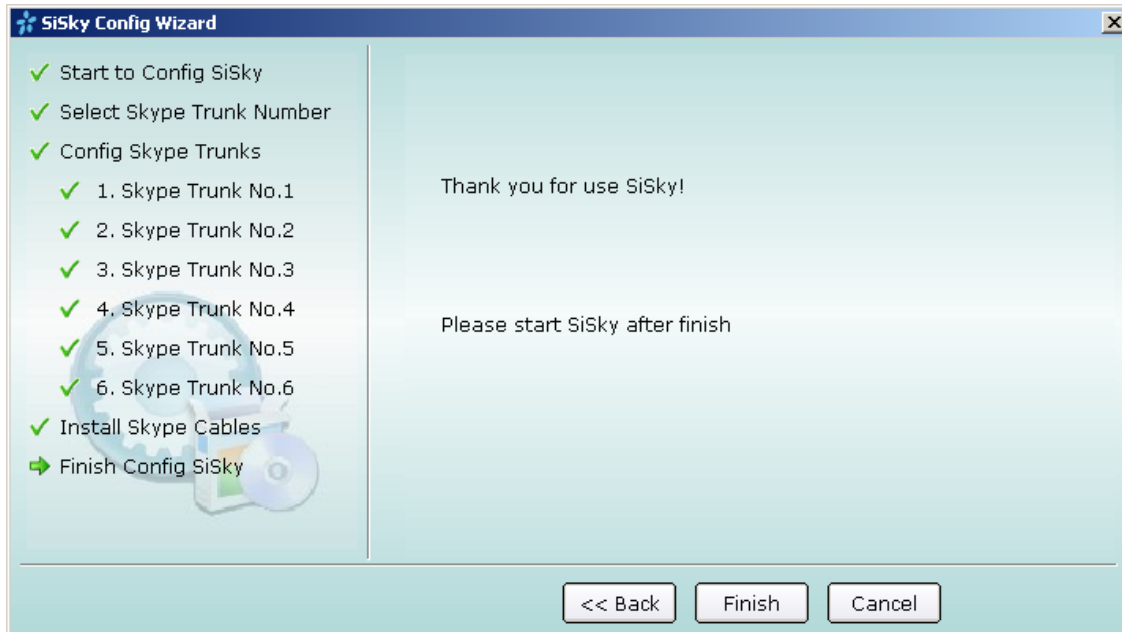


Figure 2-18

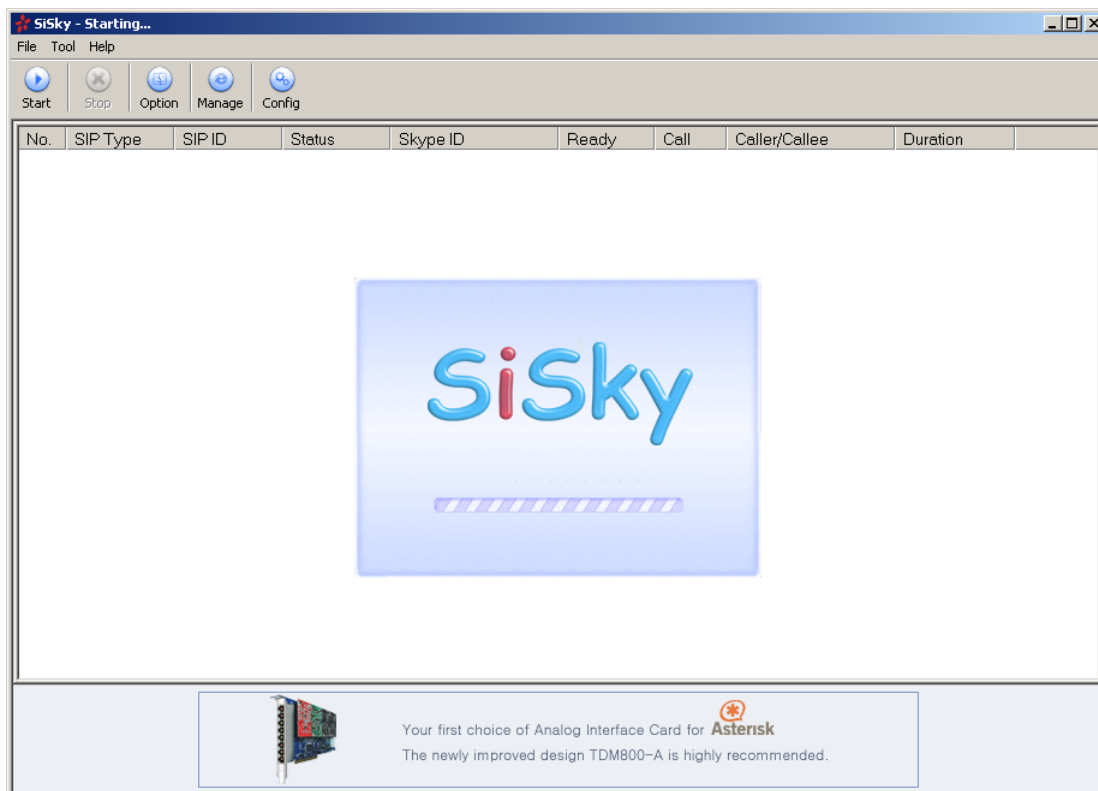
Step 7: Double-click the shortcut on desk to run the SiSky software

Figure 2-19

Step 8: Wait for all Skype IDs to log in. **Another program wants to use Skype** screen will come up. Click on the circle next to the first option, Allow this program to use Skype, and click **OK** to save.

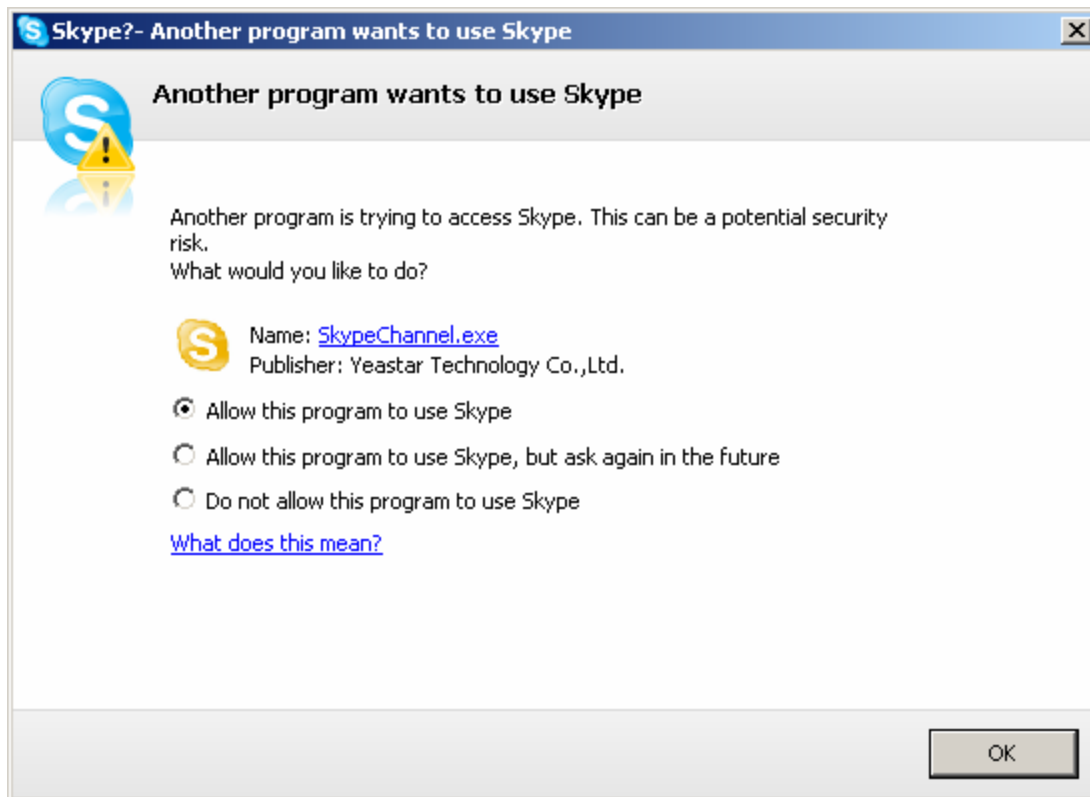


Figure 2-20

Step 9: Check if the status of all ports and Skype are absolutely normal as Figure 2-21. If Skype is launched successfully, the status of 'Ready' will show as 'Yes' on SiSky main interface.

SiSky Enterprise Edition - SIP-Skype Gateway

File Tool Help

Start Stop Option Manage Config

No.	SIP Type	SIP ID	Status	Skype ID	Ready	Connect	Skype ID	Call	Caller/Callee	Duration
1			N/A	yeastar.201	YES					
2			N/A	yeastar.202	YES					
3			N/A	yeastar.203	YES					
4			N/A	yeastar.204	YES					
5			N/A	yeastar.205	YES					
6			N/A	yeastar.206	YES					
7			N/A	yeastar.207	YES					
8			N/A	yaastar.208	YES					
9			N/A	yeastar.209	YES					
10			N/A	yeastar.210	YES					
11			N/A	yeastar.211	YES					
12			N/A	yeastar.212	YES					
13			N/A	yeastar.213	YES					
14			N/A	yeastar.214	YES					
15			N/A	yeastar.215	YES					
16			N/A	yeastar.216	YES					
17			N/A	yeastar.217	YES					
18			N/A	yeastar.218	YES					
19			N/A	yeastar.219	YES					
20			N/A	yeastar.220	YES					
21			N/A	yeastar.221	YES					
22			N/A	yeastar.222	YES					
23			N/A	yeastar.223	YES					
24			N/A	yeastar.224	YES					
25			N/A	yeastar.225	YES					
26			N/A	yeastar.226	YES					
27			N/A	yeastar.227	YES					
28			N/A	yeastar.228	YES					
29			N/A	yeastar.229	YES					
30			N/A	yeastar.230	YES					

BizPBX -- Full Business PBX Solution for SMBs
Software based IPPBX with Call Manager & Skype Trunks

Figure 2-21

3. Installing Trixbox/Elastix

1. Trixbox

1) Download Software

Download Trixbox from official website <http://www.trixbox.org>

2) Installing Trixbox

More information please see trixbox website.

2. Elastix

1) Download Software

Download Elastix from official website <http://www.elastix.org>

2) Installing Elastix

More information please see elastix website.

4. Connecting Trixbox/Elastix with SiSky Server

For instance, Trixbox/Elastix server's IP address is [192.168.5.246](#), SiSky server's IP address is [192.168.5.240](#). Take the voice code G711 as an example.

4.1 Configuring SiSky Server

4.1.1 Set SiSky Options

1. Set the Access IP Address

Click 'Option' on SiSky main menu.

- 1) Start SiSky When I start Windows
- 2) Add load balancing engine:

Note: this function will help system to equal call rate among all trunks.

- 3) Answer SIP incoming call immediately

Note: If disable this function, system will not sent reversal signal.

- 4) Access IP Address

Note: Multiple IP Address separated by ';':

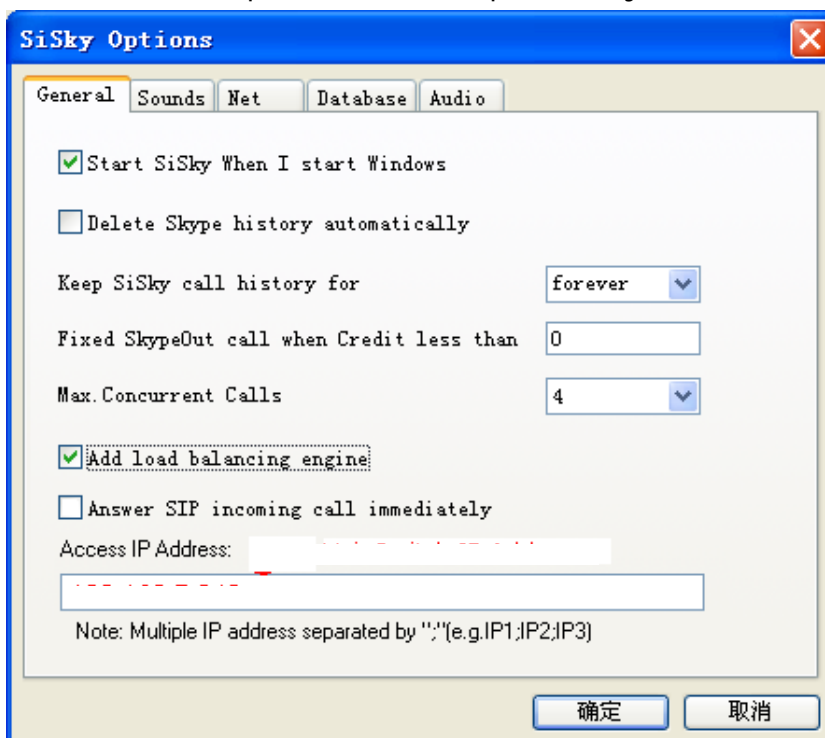


Figure 4-1

2. Net

- 1) Enable Direct Outward Dialing-One of Extension Mode: P2P mode.
- 2) Use STUN Server: Enable STUN Server

Note: If server is under router, please enable this function.

3) Local Port: SIP port

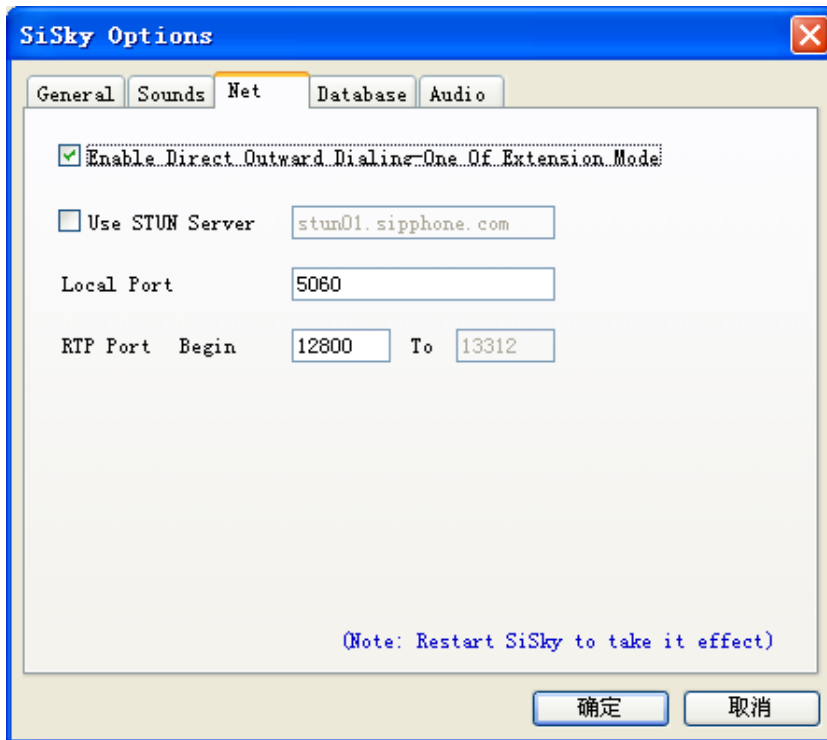


Figure 4-2

3. Audio

SiSky default code is G711. If you want to use G729 or G723, please click on the box and up it to the first rank.

Note: You need to restart SiSky software to activate the new configuration.

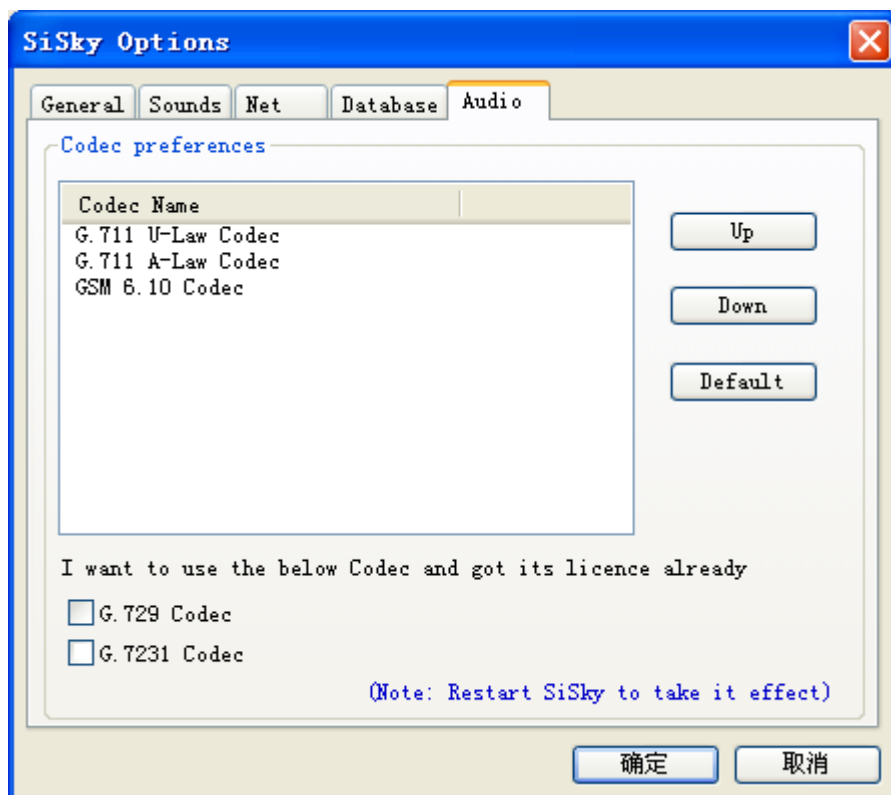


Figure 4-3

4.1.2 Set Dial Rule for SiSky

Step1: Open the SiSky Administration page.

Click 'Manage' button to enter into the page.

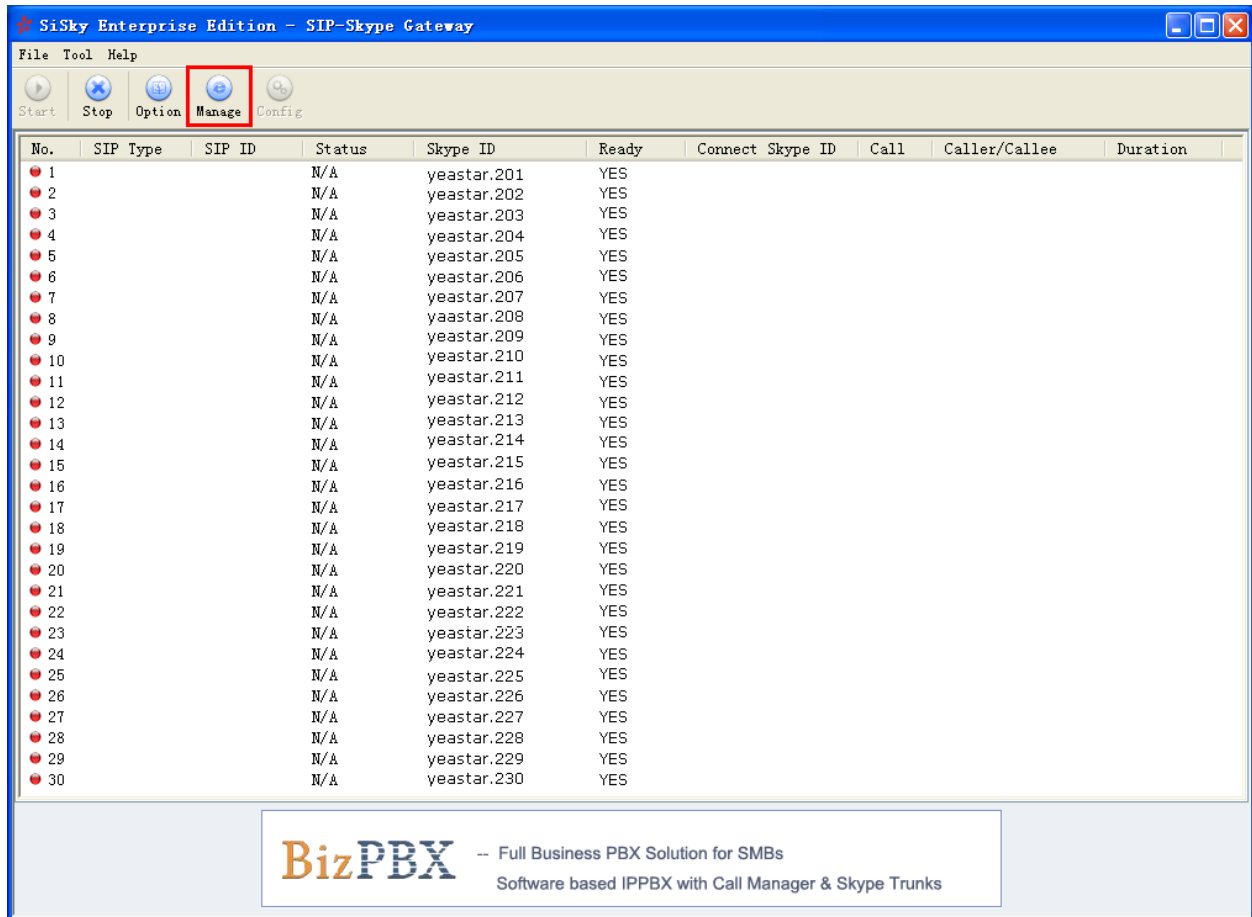


Figure 4-4

Step 2: Admin Log In

Enter the user name and password

The default user name is **admin**, and password is **password**

Step 3: Set Dial Rule

Making calls through Skype, one have to conform to the Skype dialing scheme as well as calling through PSTN. Maybe you had already got used to PSTN scheme and not accustomed to Skype rules. Therefore, **Dial Rule** settings will assist you to make Skype calls based on traditional PSTN calling habits. Keep the dialing habit as same as PSTN.

For example, a PSTN user in the mainland of China wants to make an international call IDDD (international direct distance dialing), which format is **00+country code+area code+telephone number**; make a domestic call DDD (domestic distance dialing), which format is **0+area code+telephone number**; While the SkypeOut format, no matter of

domestic or international calls, is **00+country code+area code+ telephone number**.

An International call:

1) A Chinese user calls to Canada in traditional **PSTN format**: the country code is 1, the area code is 416, phone number is "12345678", then he would dial: **00 +1+ 416 + 12345678**;

2) A Chinese user calls to Canada in **SkypeOut format**: the country code is 1, the area code is 416, phone number is "12345678", then he would dial: **00 +1+ 416 + 12345678**;

In this example, the PSTN and SkypeOut format for an international call is the same.

A Domestic Distance call:

3) A Chinese user in Peking calls to Shenzhen in traditional **PSTN format**: the area code is "755", phone number is "12345678", then he would dial:

0+755+12345678;

4) A Chinese user in Peking calls to Shenzhen in **SkypeOut format**: the area code is "755", phone number is "7571234", then he would dial:

00+86 (country code)+755+12345678;

Therefore, in order to not change the PSTN dialing format, this user can take advantage of dial rule to set it as below for simple:

substitute **00** for **00**; and substitute **0** for **0086** as Figure 4-5:

When the number begins by 00, SiSky will identify it as international call requirement. When the dialing call begins by 0, SiSky will identify the 0 as domestic call requirement and transfer it to 0086 automatically to conform SkypeOut format.

Why we substitute 00 for 00? Say it simply, to prevent 00 matches with 0. Because both the international and domestic calls are begin by 0, for fear of replacing **00141612345678** with **00860141612345678**.

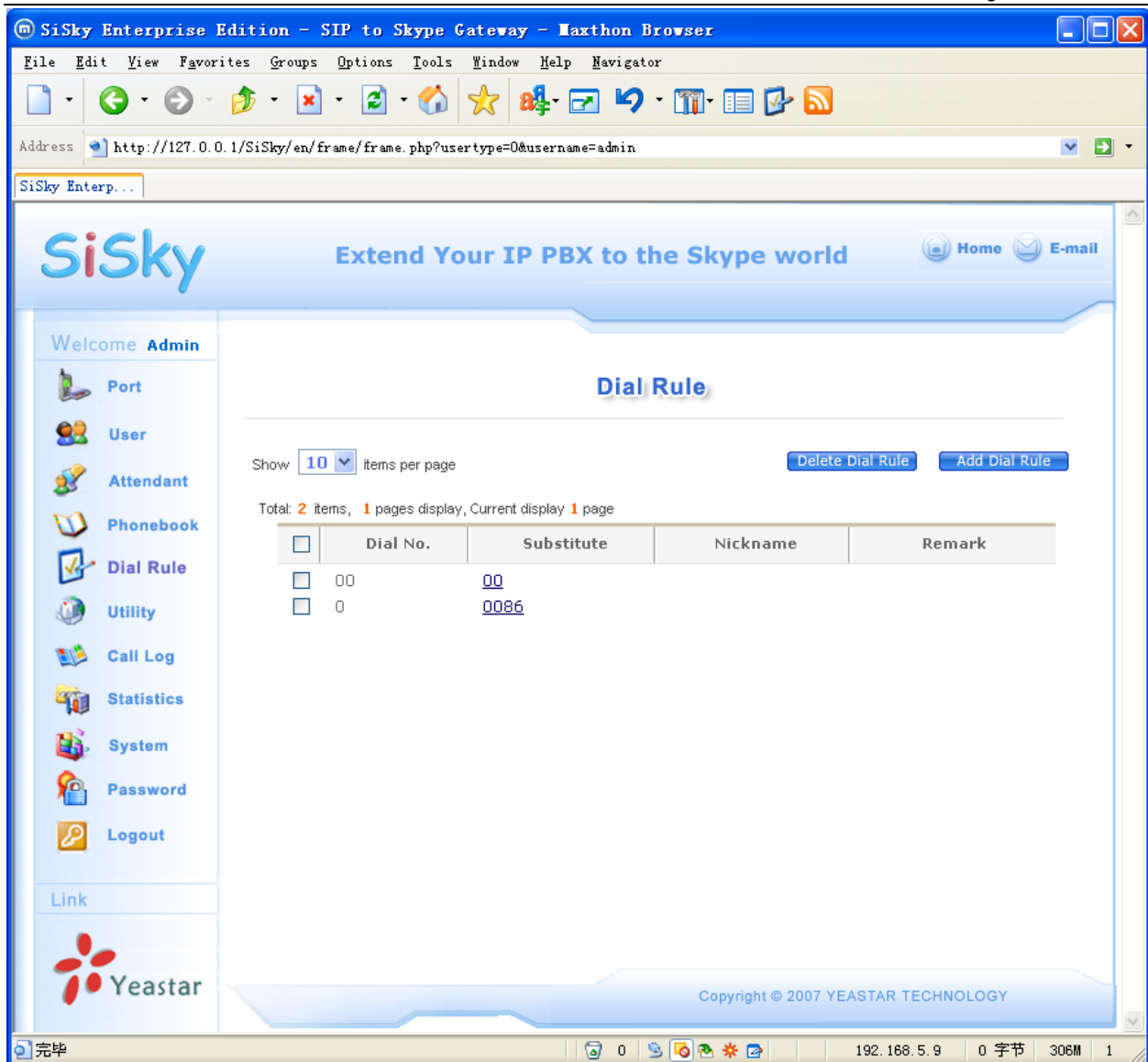


Figure 4-5

4.1.3 Set Skype incoming call route in SiSky

E.g. Configuration the **Port1** incoming route.

Step1: Open the SiSky Administration page → Port configuration page.

Step2: Choose Port1.

Example, If have skype user make callin, let it call to SIP Server's Extension number or IVR Number **7777**, and the SIP Server's IP Address is 192.168.5.246. so the configuration like below.

Direct In: 7777@192.168.5.246 (extension number@sip server's ip address)

Busy Transfer: selected "To Any Idle Port in this server"

Note: other ports settings like port1.

Trunk Name: SIP to Skype

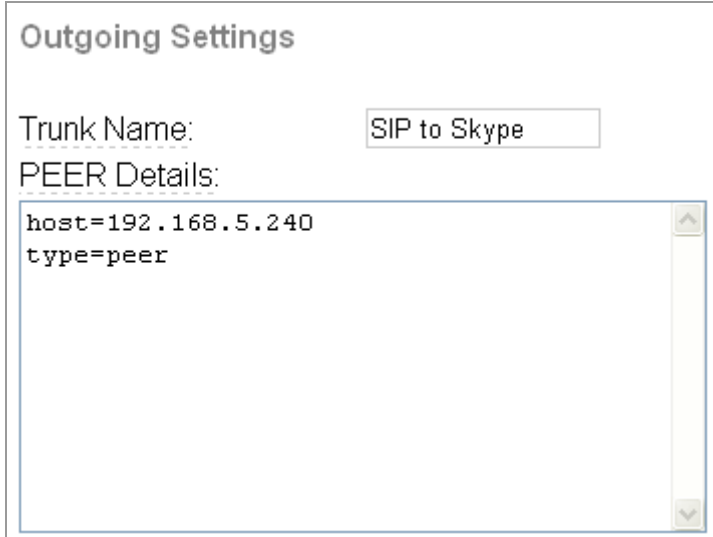
PEER Details:

host=192.168.5.240

type=peer

see below figure 4-6.

other settings let it default.



Outgoing Settings

Trunk Name:

PEER Details:

```
host=192.168.5.240
type=peer
```

Figure 4-7

4.2.2 Set Outbound Route

Choose 'Outbound Routes' → 'Add Route' on Trixbox/Elastix left listing menu.

Outbound Route Settings

Route Name: Call-via-Skype

Dial Patterns: 0|.

Add Route

Route Name:

Route Password:

PIN Set:

Emergency Dialing:

Intra Company Route:

Music On Hold?:

Dial Patterns

0| .

Dial patterns wizards:

Trunk Sequence

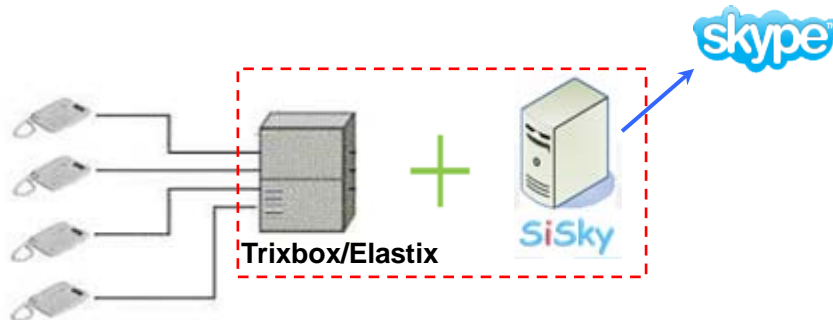
Figure 4-8

5. Sample

1. Application Demands

- 1) Utilizing SiSky as Skype landline for Trixbox/Elastix.
- 2) Make both domestic long distance and international calls at low rate.
- 3) Receive the incoming call from Skype.

2. Application Environment



3. Test

1) Make call out via Skype

If extension 'iphone' wants to make calls through Skype, please refer to the Chapter 4.1.2 Dial Rule: 0+ city code + telephone number or 0 + mobile phone number.

2) Receive the incoming call from Skype

Skype user make call to the SiSky server's skypeid, it will auto call to the extension number 7777.

[End]