

Application for Company with Branch Offices

KEYWORD: ExSky, BizSkype, SKY800, Skype, PBX, Skype Exchange, Skype Gateway, Trunks, Business, Web Call, Skype Me, SkypeOut, Skypeln

Environment

The company has two branch offices, one in New York and the other one lies in London. Here, New York Office and London Offices stand for New York branch and London branch respectively.

There are following equipments in New York Office:

- 1) IKE TC2000H PABX Telephone Switch (6 ports of CO Line, 32 ports of extension line, extension number covers from 801 to 832)
- 2) A computer with Windows XP operation system
- 3) SKY824 card (1 main board + 1 S2 module + 2 O2 modules, total 6 ports)

There are same equipments in London Office:

- 1) IKE TC2000H PABX Telephone Switch (6 ports of CO Line, 32 ports of extension line, extension number covers from 901 to 932)
- 2) A computer with Windows XP operation system
- 3) SKY824 card (1 main board + 1 S2 module + 2 O2 modules, total 6 ports)

Remark: Any brand of PBX is OK; here IKE TC2000H PABX Telephone Switch is just an example)

Functions of ExSky

To perform the following functions by configuration ExSky

- 1) Make SkypeOut calls
 - 2) Connect two branches
 - 3) Receive Skype calls from website
-

Details of Configuration

1 New York Office:

- Configure different ports of Skype to actualize the above three functions:
 - 1) Port 1 & Port 2 & Port 5 & Port 6: Make SkypeOut calls
 - 2) Port 3: Connect with London Office
 - 3) Port 4: Receive calls from website
- Configure S2 and O2 modules as following, Figure 1:

No.	Port
1	FXO
2	FXO
3	FXO
4	FXO
5	FXS
6	FXS

Figure 1

- Basic configuration of PBX, Figure 2:

6 CO ports			32 extension ports							
#1	#3	#5	801	805	809	813	817	821	825	829
#2	#4	#6	802						830
			803							831
			804	808	812	816	820	824	828	832

Figure 2

- Link the card, PBX and regular office phones as the following way, Figure 3:

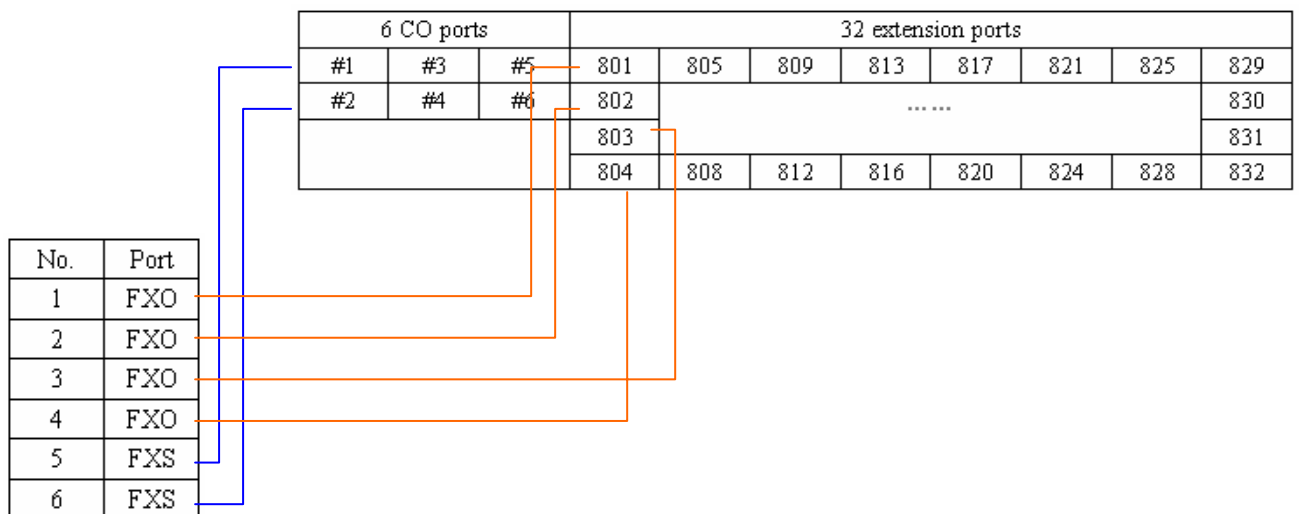


Figure 3

- 1) Link 4 FXO ports of SKY800 card to the extension ports of PBX 801, 802, 803 and 804
- 2) Link 2 FXS ports of SKY800 card to the CO Line ports of PBX #1 and #2
- 3) Link regular office phones to the extension ports of PBX 805, 806, 807.....822, 823, 824

- Basic configuration of ExSky, Figure 4:

No.	Port	Line No.	Skype ID	Direct-Line
1	FXO	801	NY01	
2	FXO	802	NY02	
3	FXO	803	NY03	London03
4	FXO	804	NY04	
5	FXS	#1	NY05	
6	FXS	#2	NY06	

Figure 4

2 London Office:

- Configure different ports of Skype to actualize the above three functions:
 - 1) Port 1 & Port 2 & Port 5 & Port 6: Make SkypeOut calls
 - 2) Port 3: Connect with London Office
 - 3) Port 4: Receive calls from website

- Configure S2 and O2 modules as following, Figure 5:

No.	Port
1	FXO
2	FXO
3	FXO
4	FXO
5	FXS
6	FXS

Figure 5

- Basic configuration of PBX, Figure 6:

6 CO ports			32 extension ports							
#1	#3	#5	901	905	909	913	917	921	925	929
#2	#4	#6	902						930
			903							931
			904	908	912	916	920	924	928	932

- Link the card, PBX and regular office phones as the following way, Figure 7:

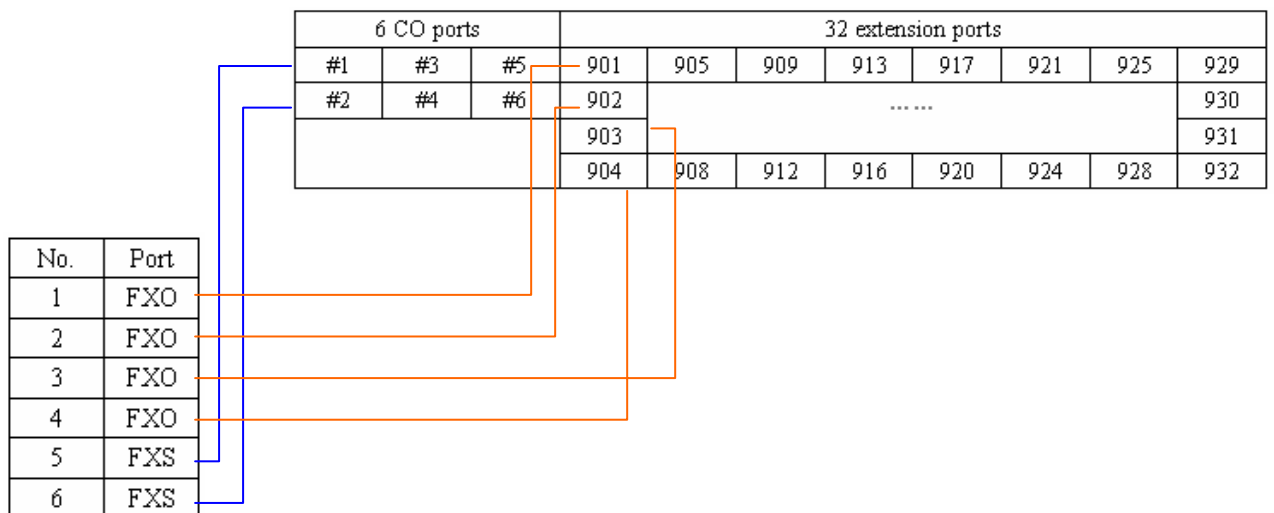


Figure 7

- 1) Link 4 FXO ports of SKY800 card to the extension ports of PBX 901, 902, 903 and 904
- 2) Link 2 FXS ports of SKY800 card to the CO Line ports of PBX #1 and #2
- 3) Link regular office phones to the extension ports of PBX 905, 906, 907.....922, 923, 924

● Basic configuration of ExSky, Figure 8:

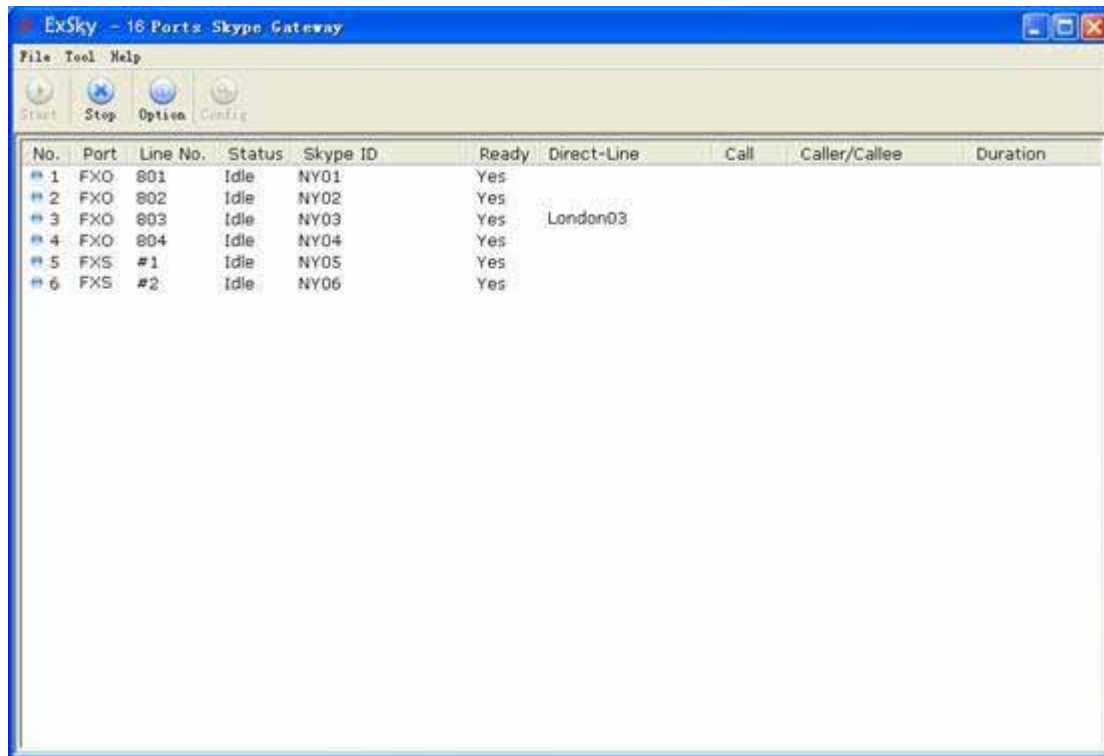
No.	Port	Line No.	Skype ID	Direct-Line
1	FXO	901	London 01	
2	FXO	902	London 02	
3	FXO	903	London 03	NY03
4	FXO	904	London 04	
5	FXS	#1	London 05	
6	FXS	#2	London 06	

Figure 8

Example

Based on the above configurations, ExSky should be showed as Figure 9

In New York Office



No.	Port	Line No.	Status	Skype ID	Ready	Direct-Line	Call	Caller/Callee	Duration
# 1	FXO	801	Idle	NY01	Yes				
# 2	FXO	802	Idle	NY02	Yes				
# 3	FXO	803	Idle	NY03	Yes	London03			
# 4	FXO	804	Idle	NY04	Yes				
# 5	FXS	#1	Idle	NY05	Yes				
# 6	FXS	#2	Idle	NY06	Yes				

Figure 9

Staff in New York Office could bring the three functions into effect through following ways:

Make the reference of the Figure 9 on above.

1) SkypeOut

For example you wan to call a client, his number is 0015555555.

- **Call through extension line 801**
 - 1) Off hook, dial 801
 - 2) Hear the dial tone
 - 3) Then dial the callee number 0015555555

- **Call through extension line 802**
 - 1) Off hook, dial 802
 - 2) Hear the dial tone
 - 3) Then dial the callee number 0015555555

- **Call through CO line #1**
 - 1) Off hook, dial #1

- 2) Hear the dial tone
- 3) Then dial the callee number 0015555555

- **Call through CO line #2**

- 1) Off hook, dial #2
- 2) Hear the dial tone
- 3) Then dial the callee number 0015555555

Remark: Please make sure you have Skype credits on these Skype IDs.

2) Calls between Branch Offices

If you want to call the extension line 905 of London office

- 1) Off hook, dial 803
- 2) Hear the automatic attendant from London office ExSky
- 3) Then dial the extension number 905

3) WebCall

- 1) Public the Skype ID 'NY04' on the website as 'SkypeMe'
[How to do it?](#)
- 2) Client will call this ID and then hears an automatic attendant from ExSky
- 3) Then client could dial the number according to the automatic attendant message.

London Office

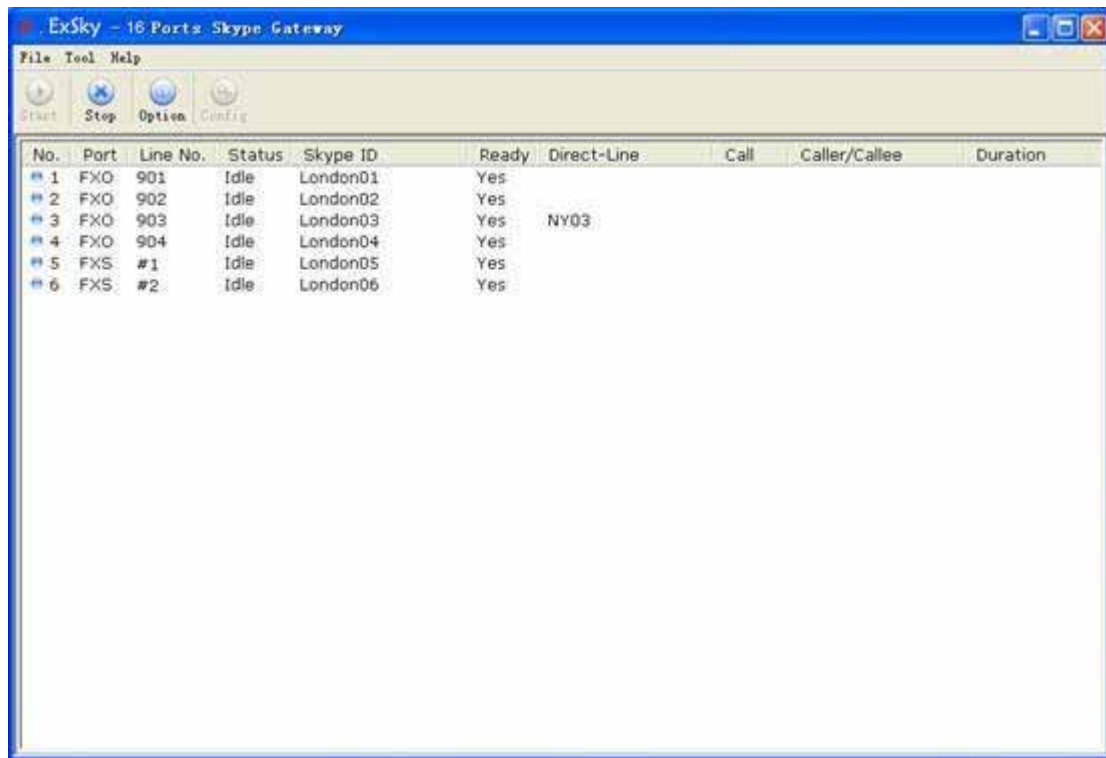


Figure 10

Staff in London Office could bring the three functions into effect by following ways:

Make the reference of the Figure 10 on above.

1) SkypeOut

For example you want to call a client, his number is 0011234567.

- **Call through extension line 901**
 - 1) Off hook, dial 901
 - 2) Hear the dial tone
 - 3) Then dial the callee number 0011234567

- **Call through extension line 902**
 - 1) Off hook, dial 902
 - 2) Hear the dial tone
 - 3) Then dial the callee number 0011234567

- **Call through CO line #1**
 - 1) Off hook, dial #1
 - 2) Hear the dial tone
 - 3) Then dial the callee number 0011234567

- **Call through CO line #2**

- 1) Off hook, dial #2
- 2) Hear the dial tone
- 3) Then dial the callee number 0011234567

Remark: Please make sure you have Skype credits on these Skype IDs.

2) Calls between Branch Offices

If you want to call the extension line 805 of New York office

- 1) Off hook, dial 903
- 2) Hear the automatic attendant from London office ExSky
- 3) Then dial the extension number 805

3) WebCall

- 1) Release the Skype ID 'London04' on the website as 'SkypeMe'
- 2) Client will call this ID and then hears a automatic attendant from ExSky
- 3) Then client could dial the number according to the automatic attendant message.

<FINISH>